

#be  **racer**

MOTORCYCLES

#be **a** racer

a

**THIS IS OUR
PHILOSOPHY,
OUR APPROACH
TO LIFE!**



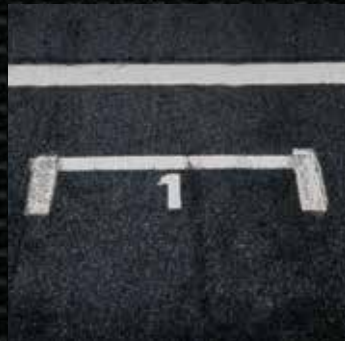
Being a racer is not a profession, it's a way of being, something inside of us, in our DNA.

If you love riding your motorbike, sensing, feeling the wind blowing along the fairing and watching the world passing by through your visor, we get it.

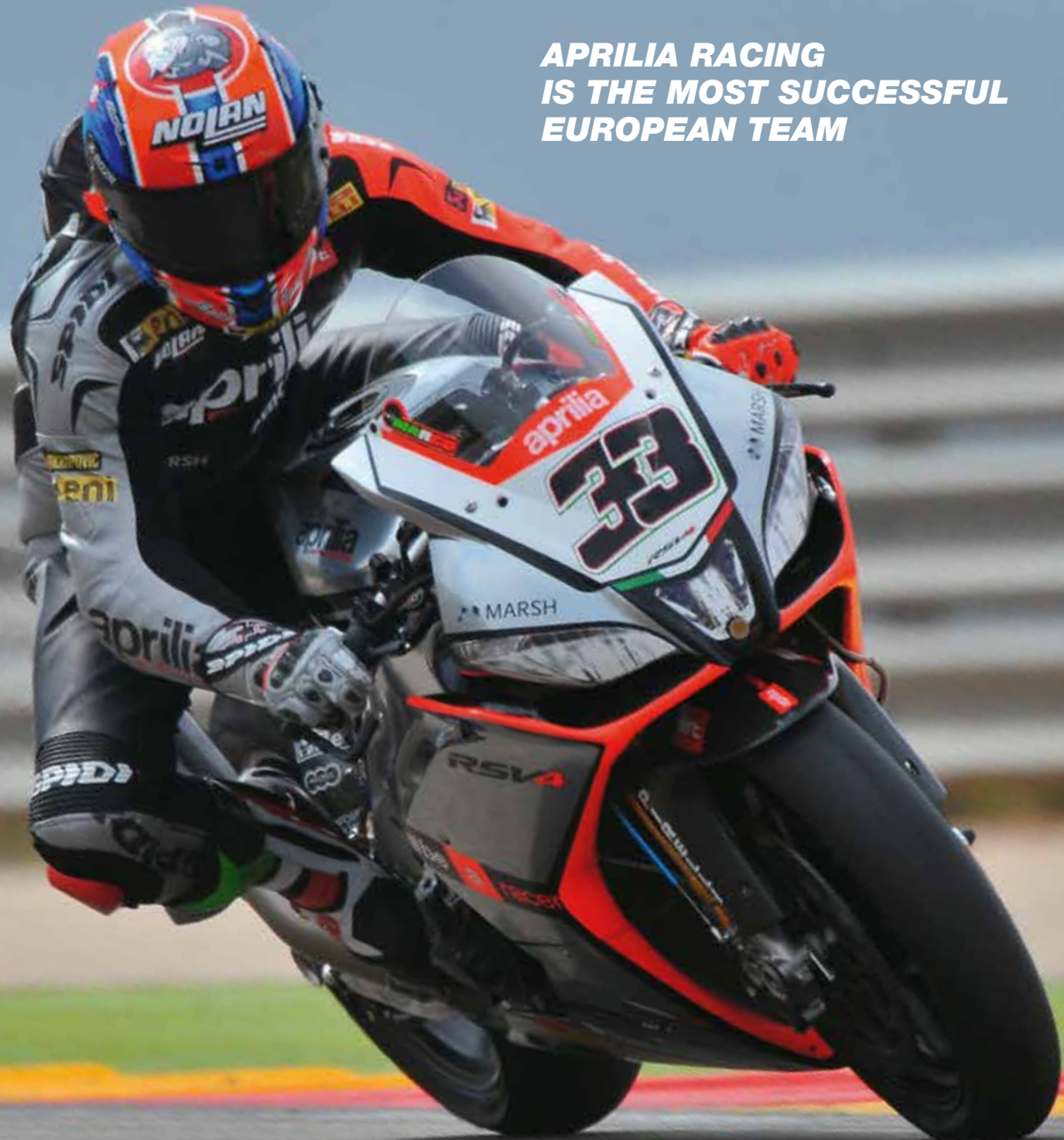
We've felt that way since our first roar.



#be a racer



**APRILIA RACING
IS THE MOST SUCCESSFUL
EUROPEAN TEAM**



aprilia®

SCHOOL OF CHAMPIONS RACING DNA

54 world titles, hundreds of wins in the MotoGP, SBK and Offroad: Aprilia is the most successful European brand in the history of motorcycling among those still active. A racing team that has pioneered ideas and technologies, that has always sought new challenges: from MotoGP to Motocross, from Superbike to Supermotard, from Rally to Trial. Many of the most important champions in the history of modern motorcycling grew up and became successful in Aprilia: Max Biaggi, Valentino Rossi, Loris Capirossi, Marco Melandri, Jorge Lorenzo, Casey Stoner, Thierry Van Den Bosch, Adrien Chareyre and many more. With all of them, Aprilia shared passion, challenges and victories. The same winning emotions that Aprilia shares every day with every biker on roads and racetracks around the world.



54 WORLD TITLES

26

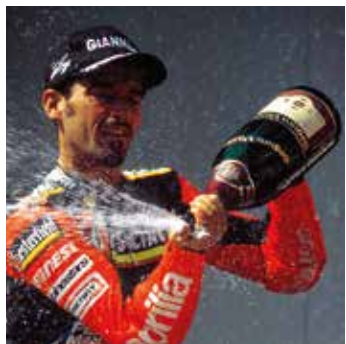
RIDERS

28

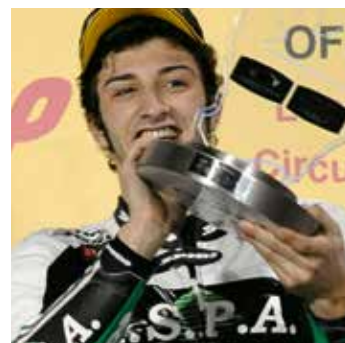
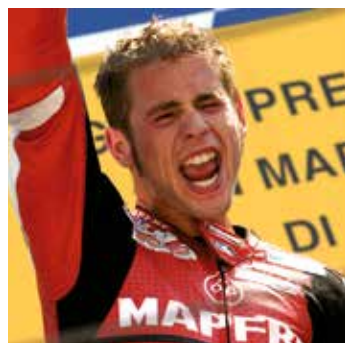
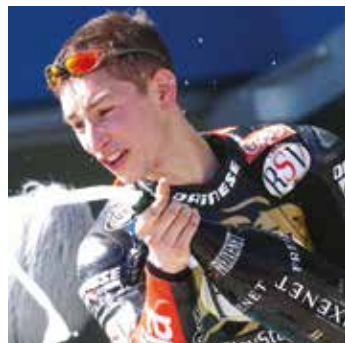
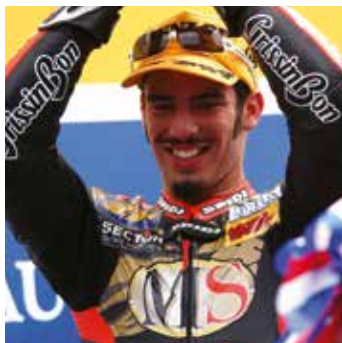
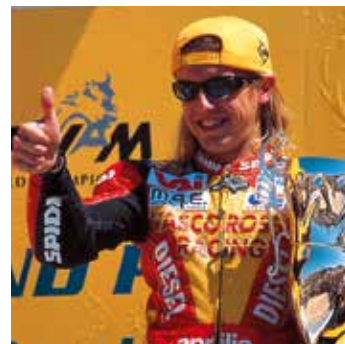
MANUFACTURERS

339

VICTORIES



**ALL
THE BEST
CHAMPIONS
RACED
FOR
APRILIA**



A detailed view of an Aprilia motorcycle, showing the front fairing, handlebars, and engine. A semi-transparent wireframe overlay is applied to the entire motorcycle, highlighting its structural complexity. The Aprilia logo is visible on the front fairing.

a PRC

a DD

a TC

a CC

aprilia[®]

WINNING TECHNOLOGY FROM RACE TO ROAD

From race to road. Setting new technological standards is our job, our daily commitment. The world titles won by Aprilia are the result of continuous technological innovation. The same that make every Aprilia bike unique, the same that make every Aprilia biker a racer. #bearacer is a state of mind, which feeds on ever new challenges, which is why Aprilia is addressing the most technologically ambitious, returning to MotoGP.

From the experience acquired on the track, Aprilia has developed the most advanced technologies and electronics: safety and performance assistance systems, geometry adjustment, chassis customisation, engine mappings. To allow every biker to express their maximum potential. Even the most expert and demanding. Aprilia electronic systems are the benchmark in the global motorcycle panorama: Ride-by-Wire, aPRC (Aprilia Performance Ride Control), ABS, aDD (Aprilia Dynamic Damping). This is how Aprilia transforms riding into an absolute, safe and exciting experience. Aprilia chassis excellence is built around materials and solutions that win in racing, with manic attention to every detail. **Aprilia: record-breaking technology and excitement. Ready for MotoGP.**



#road to motoGP

THE NEW SPORTS BENCHMARK

APRILIA
TECHNOLOGY:



RSV4 RF SUPERPOLE - with RACE PACK as standard



RSV4 RR ASCARI BLACK - with RACE PACK (optional)



RSV4 RR BUCINE GREY

RSV4 RR is also available with the RACE PACK



The "RACE PACK" includes:

- Öhlins front fork
- Öhlins rear shock absorber
- Öhlins steering shock absorber
- Forged aluminium alloy wheels

RSV4 RF
RSV4 RR
RSV4 RR
RACE PACK

1000

NEW
2015

The photo refers to the RSV4 RF version





TUONO V4 FACTORY SUPERPOLE



TUONO V4 RR PORTIMAO GREY



TUONO V4 RR DONINGTON BLUE

PURE ADRENALINE

APRILIA
TECHNOLOGY:



TUONO V4
FACTORY

TUONO V4
RR

1100

NEW
2015

The photo refers to the TUONO V4 FACTORY version





ADVENTURE NO LONGER HAS ANY BOUNDARIES

APRILIA
TECHNOLOGY:

aTC

aDD

aCC

ABS

CAPONORD RALLY

1200

NEW
2015



DUNE YELLOW



ARMY GREEN



SAFARI GREY





**TRAVEL AND RIDING ENJOYMENT
AT THE HIGHEST LEVEL**

APRILIA
TECHNOLOGY:

aTC

aDD

aCC

ABS

CAPONORD

**CAPONORD
TRAVEL PACK**

1200



The "TRAVEL PACK" includes:
- aDD (aprilia Dynamic Damping) system
- cruise control
- central stand
- set of panniers matching body colour



GLAM WHITE



FORMULA RED



COMPETITION BLACK



**POWER AND EXCITEMENT
WITHOUT COMPROMISE**



DORSODURO ABS

1200

ABS



**A CONCENTRATE OF PERFORMANCE,
TECHNOLOGY
AND ENJOYMENT**



DORSODURO ABS

750

ABS



FLUO RED



GLAM WHITE



TECNO BLUE



FLUO WHITE

TECHNOLOGY AND RIDING PLEASURE

SHIVER

SHIVER ABS

750

ABS



BIKING EXCITEMENT
HAS NEVER BEEN
SO EASY AND PRACTICAL

MANA GT ABS

850

ABS



FORMULA RED



APRILIA BLACK



AMBER ORANGE



COMPETITION BLACK

**THE RACE REPLICA
FOR YOUNG CHAMPIONS**

RS4

50/125



The photo refers to the RS4 125 version



**THE FIRST BIKE FOR
EVERYDAY ADVENTURE**

**RX
SX**

50



SBK REPLICA



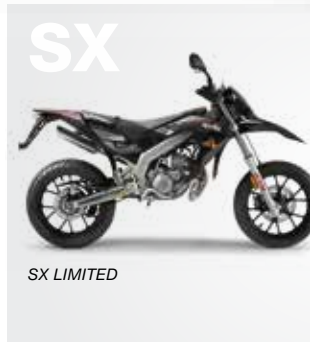
SUNNY YELLOW



MATT BLACK



RX RACING WHITE



SX LIMITED



SX RACING WHITE



**EXTREME POWER WITH
THE SAFETY OF LATEST
GENERATION ELECTRONICS**

APRILIA
TECHNOLOGY:



SRV
ABS ATC

850



WING GREY



RACING WHITE



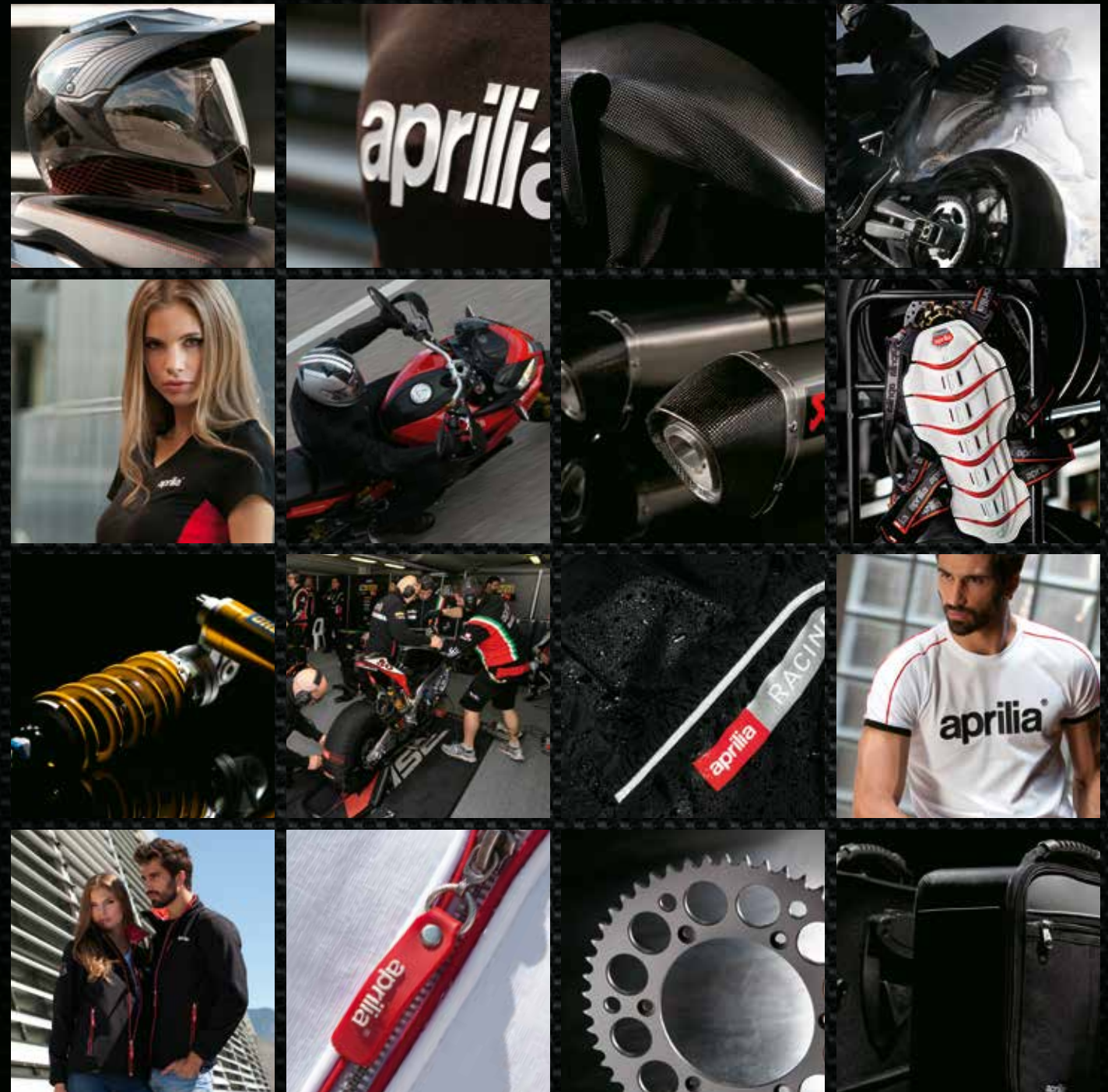
COMPETITION BLACK





STYLE AND COMFORT FROM RACE TO ROAD

From Aprilia research and experience comes a range of original accessories, designed to make the riding experience and performance even more unique. Carbon components, derived from racing bikes, machined-from-solid components and technical bags for leisure and travel: a universe of ideas, details and made-to-measure attention for every biker. Just like the apparel collection: a full line of clothing, helmets and other exclusive products, expressing the same unsurpassed attention to quality, technology and design. On the road, on the track or off road, at any time and in any situation: always with the unique Aprilia style.



aprilia®



RSV4 RF 1000



RSV4 RR 1000

AVAILABLE
ALSO WITH
RACE
PACK

Engine

Aprilia 4-cylinder, 4-stroke, liquid-cooled 90° longitudinal V-Twin with double overhead camshaft /DOHC), four valves per cylinder. Ride By Wire with 3 engine mappings (Sport, Race, Track)

Displacement

999.6 cc

Max. power at camshaft

201 HP (148 kW) at 13,000 rpm

Max. torque at camshaft

115 Nm at 10,500 rpm

Cooling

Liquid

Front suspension

Öhlins upside-down fork, 43 mm stems. Fully adjustable spring preload, hydraulic rebound and compression. 120 mm wheel travel

Rear suspension

Double-sided aluminium swingarm; Öhlins single shock absorber with piggy-back, adjustable spring preload, wheelbase, hydraulic compression and rebound. APS progressive linkage. 130 mm wheel travel

Front brake

Ø 320 mm floating double disc with aluminium flange. Brembo M430 4-piston mono-block radial calipers. Radial pump and metal braid brake pipe

Rear brake

Ø 220mm disc. Brembo Ø 32 mm 2 isolated piston caliper Pump with integrated tank and metal braid pipe

ABS system

Bosch 9MP ABS, adjustable to 3 mappings, with de-selectable RLM (Rear wheel Lift-up Mitigation) strategy.

Front wheel

3.5" x 17" forged aluminium alloy wheel, fully machined, with 5 double spokes. Tyre: 120/70 ZR 17"

Rear wheel

6" x 17" forged aluminium alloy wheel, fully machined, with 5 double spokes. Tyre 200/55 ZR 17"

Saddle height

840 mm

Fuel tank capacity

18.5 litres - 4 reserve

Emissions compliance

Euro 3

Electronic management

APRC (Aprilia Performance Ride Control) system including traction control (ATC), wheel control (AWC), launch control (ALC), quick shift (AQS), all independently settable and de-selectable. PMP predisposition

Aprilia 4-cylinder, 4-stroke, liquid-cooled 90° longitudinal V-Twin with double overhead camshaft /DOHC), four valves per cylinder. Ride By Wire with 3 engine mappings (Sport, Race, Track)

999.6 cc

201 HP (148 kW) at 13,000 rpm

115 Nm at 10,500 rpm

Liquid

Sachs upside-down fork, 43 mm stems. Fully adjustable spring preload, hydraulic rebound and compression. 120 mm wheel travel

Double-sided aluminium swingarm; Sachs single shock absorber with piggy-back, adjustable spring preload, wheelbase, hydraulic compression and rebound. APS progressive linkage. 130 mm wheel travel

Ø 320 mm floating double disc with aluminium flange.

Brembo M430 4-piston mono-block radial calipers.

Radial pump and metal braid brake pipe

Ø 220mm disc Brembo Ø 32 mm 2 isolated piston caliper

Pump with integrated tank and metal braid pipe

Bosch 9MP ABS, adjustable to 3 mappings, with de-selectable RLM (Rear wheel Lift-up Mitigation) strategy.

3-spoke 3.5" x 17" aluminium alloy wheel.

Tyre: 120/70 ZR 17"

3-spoke 6" x 17" aluminium alloy wheel.

Tyre: 200/55 ZR 17"

840 mm

18.5 litres - 4 reserve

Euro 3

APRC (Aprilia Performance Ride Control) system including traction control (ATC), wheel control (AWC), launch control (ALC), quick shift (AQS), all independently settable and de-selectable. PMP predisposition

aprilia®



TUONO V4 FACTORY 1100



TUONO V4 RR 1100

Engine

Aprilia 4-cylinder, 4-stroke, liquid-cooled 90° longitudinal V-Twin with double overhead camshaft /DOHC), four valves per cylinder. Ride By Wire with 3 engine mappings (Sport, Race, Track)

Displacement

1077 cc

Max. power at camshaft

175 HP (129 kW) at 11,000 rpm

Max. torque at camshaft

120 Nm at 9,000 rpm

Cooling

Liquid

Front suspension

Öhlins upside-down fork, Ø 43 mm stems. Fully adjustable spring preload, hydraulic rebound and compression. 120 mm wheel travel

Rear suspension

Aluminium swingarm; Öhlins single shock absorber with piggy-back, adjustable spring preload, wheelbase, hydraulic compression and rebound. APS progressive linkage. 130 mm wheel travel

Front brake

Ø 320 mm double disc with aluminium flange.

Brembo M432 mono-block radial calipers

and metal braid brake pipe

Ø 220mm disc Brembo caliper. Pump with integrated tank

and metal braid brake pipe

Rear brake

Bosch 9MP ABS, adjustable to 3 mappings, with de-selectable RLM (Rear wheel Lift-up Mitigation) strategy

3-spoke 3.5"x17" aluminium alloy wheel.

Front wheel

Tyre: 120/70 ZR 17"

Rear wheel

3-spoke 6"x17" aluminium alloy wheel.

Tyre: 200/55 ZR 17"

Saddle height

825 mm

Fuel tank capacity

18.5 litres - 4 reserve

Emissions compliance

Euro 3

Electronic management

APRC (Aprilia Performance Ride Control) system including traction control (ATC), wheel control (AWC), launch control (ALC), quick shift (AQS), all independently settable and de-selectable. PMP predisposition

Aprilia 4-cylinder, 4-stroke, liquid-cooled 90° longitudinal V-Twin with double overhead camshaft /DOHC), four valves per cylinder. Ride By Wire with 3 engine mappings (Sport, Race, Track)

1077 cc

175 HP (129 kW) at 11,000 rpm

120 Nm at 9,000 rpm

Liquid

Sachs upside-down fork, Ø 43 mm stems. Adjustable spring preload, hydraulic rebound and compression. 120 mm wheel travel

Double-sided aluminium swingarm; Sachs single shock absorber with piggy-back, adjustable spring preload, hydraulic compression and rebound. APS progressive linkage. 130 mm wheel travel

Ø 320 mm double disc Brembo M432 mono-block radial calipers and metal braid brake pipe

Ø 220mm disc Brembo caliper. Pump with integrated tank and metal braid brake pipe

Bosch 9MP ABS, adjustable to 3 mappings, with de-selectable RLM (Rear wheel Lift-up Mitigation) strategy

3-spoke 3.5"x17" aluminium alloy wheel.

Tyre: 120/70 ZR 17"

3-spoke 6"x17" aluminium alloy wheel.

Tyre: 200/55 ZR 17"

825 mm

18.5 litres - 4 reserve

Euro 3

APRC (Aprilia Performance Ride Control) system including traction control (ATC), wheel control (AWC), launch control (ALC), quick shift (AQS), all independently settable and de-selectable. PMP predisposition

aprilia®



CAPONORD 1200 RALLY



CAPONORD 1200

AVAILABLE
ALSO WITH
TRAVEL
PACK

Engine

Aprilia 2-cylinder, 4-stroke, 90° longitudinal V-Twin with double overhead camshaft controlled by a mixed gear/chain system, four valves per cylinder. Ride By Wire with 3 engine mappings (Sport, Touring, Rain)

Engine capacity

1197 cc

Max. power at crankshaft

125 HP (92 kW) at 8,000 rpm

Max. torque at crankshaft

115 Nm at 6,800 rpm

Cooling

Liquid

Front suspension

Completely adjustable Sachs 43 mm upside-down fork. Hydraulic rebound and compression damper electronically controlled with aDD (Aprilia Dynamic Damping)

Rear suspension

Sachs dynamic single shock absorber. Spring preload and hydraulic rebound and compression damper electronically controlled with aDD (Aprilia Dynamic Damping)

Front brake

Ø 320 mm stainless steel floating double disc
Brembo M432 4-piston radial mono-block calipers.
Metal braid brake pipes.

Rear brake

Ø 240 mm stainless steel disc.
Brembo single piston caliper.
Metal braid brake pipe.

ABS system

Continental dual channel de-selectable ABS system

Front wheel

3.00" X 19" spoked wheel
Tyre: 120/70-R19"

Rear wheel

4.50" X 17" spoked wheel
Tyre: 170/60-R17"

Seat height

840 mm

Fuel tank capacity

24 litres - 5 reserve

Emissions compliance

Euro 3

Electronic management

Continental dual channel de-selectable ABS system and Aprilia Traction Control. ADD system (semi-active suspension)

Version

Aprilia 2-cylinder, 4-stroke, 90° longitudinal V-Twin with double overhead camshaft controlled by a mixed gear/chain system, four valves per cylinder. Ride By Wire with 3 engine mappings (Sport, Touring, Rain)

1197 cc

125 HP (91.9 kW) at 8,250 rpm

11.7 kgm (114.8 Nm) at 6,800 rpm

Liquid

Completely adjustable Sachs 43 mm stem upside-down fork.
167 mm wheel travel

Aluminium alloy swingarm. Sachs hydraulic shock absorber, adjustable in spring preload and hydraulic rebound damper.

150 mm wheel travel

320 mm stainless steel floating double disc

Brembo M432 4-piston radial mono-block calipers.

Metal braid brake pipes.

240 mm stainless steel disc.

Brembo single piston caliper.

Metal braid brake pipe.

Continental dual channel de-selectable ABS system

3.50" X 17" lightweight aluminium alloy with three double spokes. Tyre: 120/70 ZR 17"

6.00" X 17" lightweight aluminium alloy with three double spokes. Tyre: 180/55 ZR 17"

840 mm

24 litres - 5 reserve

Euro 3

Separately de-selectable advanced traction control (ATC) and anti-lock braking system (ABS)

TRAVEL PACK

aprilia Dynamic Damping (aDD), aprilia Cruise Control (aCC), central stand, pannier set matching body colour (29 + 29 l)

aprilia®



DORSODURO 1200 ABS ATC



DORSODURO 750 ABS

Engine

Aprilia 90° V-Twin, 4-stroke, dual overhead cam timing (DOHC), four valves per cylinder.

Ride-by-Wire with 3 engine maps

1197 cc

130 HP (96 kW) at 8,700 rpm

11.7 kgm (115 Nm) at 7,200 rpm

Liquid

Upside-down Sachs fork, Ø 43 mm stanchions.

Adjustable in compression rebound damping, and preload.

Wheel travel: 160 mm

Aluminium alloy swingarm Sachs hydraulic shock absorber with adjustable compression, rebound and preload with piggy back. Wheel travel: 155 mm

Ø 320 mm dual stainless steel floating discs.

Four-piston Brembo radial callipers.

Metal braided brake hoses

Ø 240 mm stainless steel disc.

Single piston Brembo calliper.

Metal braided brake hose

Rear brake

2-channel Continental ABS with Aprilia Traction Control (aTC) that can be disengaged separately

ABS system

Front wheel

3 split spoke wheel rim in lightweight alloy.

Tyre 120/70 ZR 17

Rear wheel

3 split spoke wheel rim in lightweight alloy.

Tyre 180/55 ZR 17

Seat height

870 mm

Fuel tank capacity

15 litres

Emissions compliance

Euro 3

Electronic management

Advanced traction control (ATC) and anti-lock braking system (ABS) which can be separately disengaged

Aprilia 90° V-Twin, 4-stroke, dual overhead cam timing (DOHC), four valves per cylinder.

Ride-by-Wire system with 3 engine maps

749.9 cc

92 HP (67.3 kW) at 8,750 rpm

8.4 kgm (82 Nm) at 4,500 rpm

Liquid

Upside-down Sachs fork, Ø 43 mm stanchions.

Adjustable in preload and hydraulic rebound damping.

Wheel travel: 160 mm

Aluminium alloy swingarm Sachs monoshock adjustable in preload and hydraulic rebound damping.

Wheel travel: 155 mm

Ø 320 mm dual wave stainless steel floating discs.

Radial callipers with four pistons

Ø 240 mm wave stainless steel disc.

Single piston calliper

Anti-lock braking system (ABS)

5 split spoke wheel rim in lightweight alloy.

Tyre 120/70 ZR 17

5 split spoke wheel rim in lightweight alloy.

Tyre 180/55 ZR 17

870 mm

12 litres

Euro 3

aprilia[®]



**SHIVER
750**



**MANA GT
850 ABS**

Engine

Engine capacity

Max. power at crankshaft

Max. torque at crankshaft

Cooling

Front suspension

Rear suspension

Front brake

Rear brake

Front wheel

Rear wheel

Seat height

Fuel tank capacity

Emissions compliance

Electronic management

Aprilia 90° V-Twin, 4-stroke, dual overhead cam timing (DOHC), four valves per cylinder.

Ride-by-Wire system with 3 engine maps

749.9 cc

95 HP (69.5 kW) at 9,000 rpm

8.25 kgm (80.9 Nm) at 7,000 rpm

Liquid

Upside-down fork with

Ø 43 mm stanchions.

Wheel travel: 120 mm

Aluminium alloy swingarm hydraulic shock absorber with adjustable rebound and preload.

Wheel travel: 130 mm

Ø 320 mm dual wave stainless steel floating discs.

Radial callipers with four pistons

Ø 240 mm wave stainless steel disc.

Single piston calliper

5 split spoke wheel rim in lightweight alloy.

Tyre 120/70 ZR 17

5 split spoke wheel rim in lightweight alloy.

Tyre 180/55 ZR 17

810 mm

15 litres

Euro 3

Available in version with anti-lock braking system (ABS)

Aprilia 90° V-Twin, 4-stroke, single overhead cam timing, four valves per cylinder

839.3 cc

76.1 HP (56 kW) at 8,000 rpm

7.45 kgm (73 Nm) at 5,000 rpm

Liquid

Upside-down fork with Ø 43 mm stanchions.

Wheel travel: 120 mm

Aluminium alloy swingarm Hydraulic shock absorber with adjustable rebound and preload with dial.

Wheel travel: 125 mm

Ø 320 mm dual stainless steel floating discs.

Radial callipers with four pistons

Ø 260 mm stainless steel disc.

Single piston calliper

5 split spoke wheel rim in lightweight alloy.

Tyre 120/70 ZR 17

5 split spoke wheel rim in lightweight alloy.

Tyre 180/55 ZR 17

800 mm

16 litres

Euro 3

Anti-lock braking system (ABS) as factory equipment. Sequential gearbox/Autodrive with 3 riding modes

aprilia[®]



**RS4
125**



**RS4
50**



**SX/RX
50**



**SRV
850 ABS ATC**

Engine

Engine capacity

Max. power at crankshaft

Max. torque at crankshaft

Cooling

Front suspension

Rear suspension

Front brake

Rear brake

Front wheel

Rear wheel

Seat height

Fuel tank capacity

Emissions compliance

Electronic management

Single cylinder, 4-stroke, electronic injection, 4 valves

124.8 cc

NA

NA

Liquid

Upside-down fork with Ø 41 mm stanchions. Wheel travel: 110 mm

Asymmetrical swingarm. Monoshock absorber with 130 mm wheel travel

Ø 300 mm stainless steel disc. 4-piston radial callipers

Ø 218 mm stainless steel disc. Single piston calliper

6 split spoke wheel rim in lightweight alloy. Tyre 100/80 ZR 17

6 split spoke wheel rim in lightweight alloy. Tyre 130/70 ZR 17

820 mm

14.5 litres

Euro 3

NA

Single cylinder, 2-stroke

49.9 cc

NA

NA

Liquid

Upside-down fork with Ø 41 mm stanchions. Wheel travel: 110 mm

Asymmetrical swingarm. Monoshock absorber with 130 mm wheel travel

Ø 300 mm stainless steel disc. 4-piston radial callipers

Ø 218 mm stainless steel disc. Single piston calliper

6 split spoke wheel rim in lightweight alloy. Tyre 100/80 ZR 17

6 split spoke wheel rim in lightweight alloy. Tyre 130/70 ZR 17

820 mm

14.5 litres

Euro 3

NA

Single cylinder, two-stroke

49.9 cm³

NA

NA

Liquid

Traditional fork with Ø 40 mm stanchions. Wheel travel: 195 mm

High resistance steel swingarm. Hydraulic monoshock absorber. Wheel travel: 180 mm

Ø 300 mm (SX) stainless steel disc Ø 260 mm (RX) with floating calliper

Ø 180 mm stainless steel disc with calliper with horizontally opposed pistons

Spoke wheel rims in lightweight alloy. Tyre 110/80 ZR 17 (SX); 90/90 ZR 21 (RX)

Spoke wheel rims in lightweight alloy. Tyre 130/70 ZR 17 (SX); 110/80 ZR 18 (RX)

830 mm (SX); 880 mm (RX)

7 litres

Euro 2

NA

Aprilia longitudinal V90, 4-stroke, single overhead cam timing, four valves per cylinder

839.3 cc

76 HP (55.9 kW) at 7,750 rpm

7.8 kgm (76.4 Nm) at 6,000 rpm

Liquid with three-way thermostat

Hydraulic telescopic fork with straight stanchions Ø 41 mm and set-back pin

Aluminium swingarm and laterally mounted monoshock with seven-position spring preload adjustment

Ø 300 mm dual disc with Brembo double floating calliper

Ø 280 mm disc with floating calliper

Lightweight alloy wheel rim. Tubeless 120/70-R16.

Lightweight alloy wheel rim. Tubeless 160/60-R15

780 mm

18.5 litres - 3 litre reserve included

Euro 3

Anti-locking braking system (ABS) and advanced traction control (ATC) as standard

The brand **aprilia** is the property of Piaggio & C. S.p.A.

COMPANY WITH ENVIRONMENTAL SYSTEM CERTIFIED BY DNV = ISO 14001 =

COMPANY WITH QUALITY SYSTEM CERTIFIED BY DNV = ISO 9001 =

COMPANY WITH SAFETY SYSTEM CERTIFIED BY DNV = OHSAS 18001 =



aprilia®

WWW.APRILIA.CZ