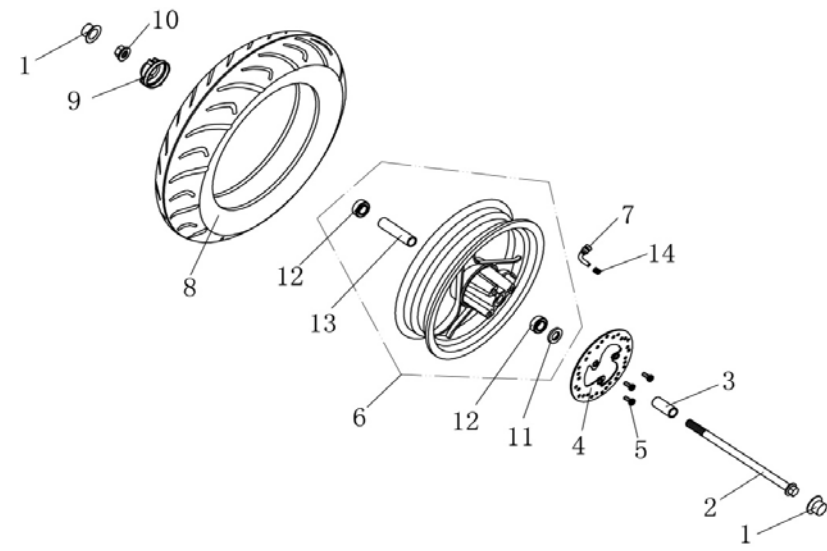


	A	B	C	D	E
1	<b>F-1操纵STEERING</b>				
2					
3	<b>Ref No</b>	<b>Part No</b>	<b>Chinese</b>	<b>Description</b>	<b>Qty</b>
4	1	QBK-45001-0000	左握把胶套	L. GRIP	1
5	2	QBL-34100-0000	左闸把组件	LEFT HANDLE SWITCH	1
6	3	QBL-34300-0000	右闸把组件	RIGHT HANDLE SWITCH	1
7	4	QBG-45110-0000	手把管	HANDLE COMP.	1
8	5	QBK-34101-0000	左手柄	LEFT LEVER	1
9	6	QBK-45010-0000	油门握把	R. GRIP	1
10	7	9105-M10*1.25*50-A	螺栓M10×1.25×50	FLANGE BOLT M10×1.25×50	1
11	8	QBC-45101-0000	手把管衬套	COLLAR	1
12	9	9214-M10*1.25-A	螺母M10×1.25	U NUT M10×1.25MM	1
13	10	QBG-46010-1000	油门线	THROTTLE CABLE	1
14	11	QBG-46020-0000	后刹线（前碟后鼓刹状态）	BRAKE CABLE, MODEL 1 REAR DRUM	1
15	12	9147-M5*10-A	螺钉GB818	PAN HEAD SCREW M5×10	1
16	13	QBK-34710-0000	后刹车灯开关线	SWITCH, BRAKE LIGHT	1

	A	B	C	D	E
17	<b>F-2前叉总成 FRONT FORK</b>				
18					
19	<b>Ref No</b>	<b>Part No</b>	<b>Chinese</b>	<b>Description</b>	<b>Qty</b>
20	1	QBE-51520-0000	前右减震器(轴孔Φ10)	F.R. FORK ASSY.(Φ10)	1
21	2	QBE-51510-0000	前左减震器(轴孔Φ10)	F.L. FORK ASSY.(Φ10)	1
22	3	QBL-51301-0000	小压紧螺母	NUT	1
23	4	QBE-51513-0000	减震器盖		2
24	5	QBL-51303-0000	钢球组 φ 5	STEEL BALL ASSY.φ 5	1
25	6	QBL-51304-0000	上轴承下钢碗	BALL RACE, 3	1
26	7	QBL-51305-0000	下轴承上钢碗	BALL RACE, 2	1
27	8	QBL-51310-0000	钢球组 φ 5	STEEL BALL ASSY.φ 5	1
28	9	QBL-51306-0000	下轴承下钢碗	BALL RACE, 4	1
29	10	QBG-51200-0000	下联板	UNDER BRACKET COMP.	1
30	11	9104-M10*1.25*30-A	螺栓M10×1.25×30	FLANGE BOLT M10×1.25×30	2
31	12	9105-M6*12-A	螺栓M6×12	FLANGE BOLT M6×12	2
32	13	QBK-51003-0000	制动油管上支架	BRAKE HOSE HOLDER 2	1
33	14	QBE-51004-0000	制动油管下支架	FR. BRAKE HOSE HOLDER	1
34	15	QBE-51511-0000	O型垫圈	O-RING	2
35	16	QBE-51512-0000	油封	GASKET	2
36	17	QBK-51002-0000	里程表下线夹	CABLE HOLDER	1

	A	B	C	D	E
37	<b>F-2前叉总成 FRONT FORK</b>				
38					
39	<b>Ref No</b>	<b>Part No</b>	<b>Chinese</b>	<b>Description</b>	<b>Qty</b>
40	18	9105 M6*16-A	螺钉M6×16	PAN HEAD SCREW M6×16	2
41	19	QBK-51001-0000	里程表上线夹	CABLE HOLDER	1
42	20	QBL-51302-0000	连体钢碗	BALL RACE, CONNECTING	1
43	21	QBL-51512-0000	油封	GASKET	2
44	22	QBE-51511-0000	O型垫圈	O-RING	2
45	23	QBL-51300-0000	钢碗组件	BALL RACE COMP	1

	A	B	C	D	E	
46	<b>F-3 前轮总成 FRONT WHEEL ASSY</b>					
47						
48	<b>Ref No</b>	<b>Part No</b>	<b>Chinese</b>	<b>Description</b>	<b>Qty</b>	
49	1	QBK-52003-0000	橡胶保护帽 (14)	RUBBER CAP( 14 )	2	
50	2	QBE-52005-0000	前轮轴M10×1.25×200	FR. WHEEL AXLE M10×1.25×200	1	
51	3	QB6-52002-0000	前轮衬套	COLLAR	1	
52	4	QB6-56001-0000	前制动盘 (圆盘)	BRAKE DISC,MODEL1	1	
53	5	QBK-56002-0000	前碟盘螺栓	BOLT	3	
54	6	QB6-52100-0000	前轮辋	RIM COMP. 3.5×12, MODEL 1 REAR DRUM	1	
55	7	QBK-52020-0000	气门嘴 (弯)	RIM VALVE COMP.	1	
56	8	QBE-52001-1000	轮胎 3.5-10	TIRE 3.5-10	1	
57	9	QBE-52040-0000	传动盒组件(12寸)	SPEEDOMETER GEAR COMP.	1	
58	10	9214-M10*1.25-B	螺母M10*1.25	FLANGE U NUT 10×1.25MM	1	
59	11	QB6-52104-0000	油封	OIL SEAL	1	
60	12	9701-6200-RS	轴承	BEARING	2	
61	13	QB6-52102-0000	中间轴套	BUSH	1	
62	14	QBK-52006-0000	气门嘴帽	CAP,RIM VALVE	1	

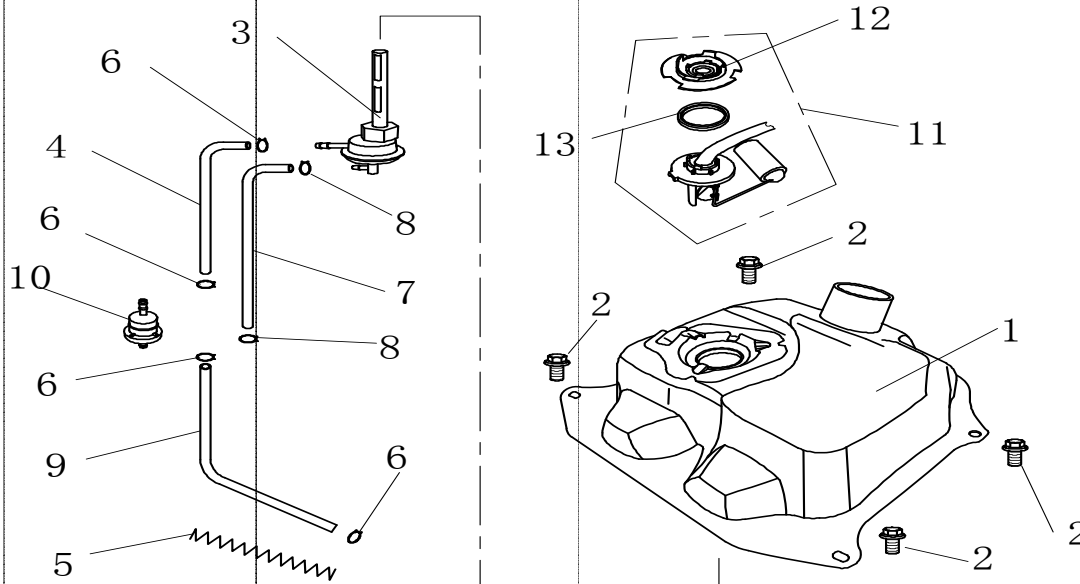
	A	B	C	D	E
63	F-4液刹总成	FRONT DISK BRAKE			
64					
65	<b>Ref No</b>	<b>Part No</b>	<b>Chinese</b>	<b>Description</b>	<b>Qty</b>
66	1	QBG-56100-0000	前液刹组件	FRONT BRAKE (EX DISK)	1
67	2	QBL-56111-0000	前液刹手柄	HANDLE, FR.	1
68	3	QB6-56131-0000	前制动蹄块组件	BRAKE PAD KIT	2
69	4	9105-M8*36-A	螺栓M8×36	BOLT M8×36	2
70	5	QBL-56110-0000	前制动上泵组件	CYLINDER COMP.	1
71	6	QBG-56120-0000	液刹油管组件	FR.BRAKE HOSE	1
72	7	QB6-56130-0000	前制动钳	CALIPER ASSY	1
73	8	QBL-56150-0000	前刹车灯开关线	SWITCH, BRAKE LIGHT	1

	A	B	C	D	E
74	<b>F-5消声器总成 MUFFLER ASSY</b>				
75					
76	<b>Ref No</b>	<b>Part No</b>	<b>Chinese</b>	<b>Description</b>	<b>Qty</b>
77	1	QB6-26120-1000	消声器焊接组件	MUFFLER JOINTING COMP	1
78	2	QB6-26110-1000	排气弯管	VENT-PIPE	1
79	3	9105-M8*45-A	螺栓M8×45	BOLT M8×45	2
80	4	9105-M6*16-A	螺栓M6×16	BOLT M6×16	2
81	5	9304-6*12*1.6-A	弹簧垫圈	SPRING WASHER	2
82	6	QBG-26500-0000	连接板	COVER, EXHAUST	1
83	7	9105-M8*35-A	螺栓M8×35	BOLT M8×35	1
84	8	9301-6*12*1.6-A	垫圈	WASHER	2
85	9	QBK-26001-0000	排气口垫片	GROMMET, EXHAUSTPIPE	1
86	10	QBK-26002-0000	补气阀密封垫	GASKET	1
87	11	QBK-26400-0000	补气阀	VALVE SECOND AIR IN	1
88	12	QBK-26007-0000	补气阀螺栓	BOLT M6×16	2
89	13	QBM-26004-0000	低温胶管(550)	RUBBER TUBE(550)	1
90	14	9105-M8*16-A	螺栓 M8×16	BOLT M8×16	4
91	15	QBK-26101-0000	筒体密封垫	GASKET	1

	A	B	C	D	E
92	<b>F-5消声器总成 MUFFLER ASSY</b>				
93					
94	<b>Ref No</b>	<b>Part No</b>	<b>Chinese</b>	<b>Description</b>	<b>Qty</b>
95	16	QBK-26132-0000	衬套	COLLOR	2
96	17	QBK-26130-0000	隔热板	SHIELD	1
97	18	QBK-26131-0000	缓冲橡胶垫	RUBBER	2
98	19	QBK-26304-0000	卡箍	CLIP	1
99	20	QBK-26005-0000	补气管防护弹簧	SPRING	1
100	21	9503-1.6*16-C	卡箍 16	CLIP 16	1

	A	B	C	D	E
101	<b>F-6 空滤器总成 AIR CLEANER ASSY</b>				
102					
103	<b>Ref No</b>	<b>Part No</b>	<b>Chinese</b>	<b>Description</b>	<b>Qty</b>
104	1	QBM-25100-1000	空滤器总成(HB2,带补气14)	AIR CLEANER ASSY.(HB2,PIPE14)	1
105	1	QBM-25100-2000	空滤器总成(HB2,带补气11.5)	AIR CLEANER ASSY.(HB2,PIPE11.5)	1
106	2	QBM-25110-0000	滤芯	FILTER	1
107	3	QBM-25101-0000	密封圈	GASKET	1
108	4	9103-M6*20-A	螺栓M6×20	BOLT M6×20	2
109	5	9503-2.0*42.5-C	管夹42.5	CLIP	1
110	6	QBK-46002-0000	后刹车线夹	GUIDE, BRAKE CABLE	1



	A	B	C	D	E
111	F-7	油箱总成	FUEL TANK ASSY		
112					
113	Ref No	Part No	Chinese	Description	Qty
114	1	QBL-44110-0000	油箱焊接组件	FUEL TANK COMP.	1
115	2	9103-M6×12-A	螺栓M6×12	FLANGE BOLT 6×12	4
116	3	QBK-44130-0000	油箱开关	FUEL COCK ASSY.	1
117	4	7102-4*8-EEC	油管1160mm	FUEL HOSE, 1 (4×8 1160mm)	1160
118	5	QBK-44001-0000	油管防护簧	SPRING	1
119	6	9503-1. 2*8-B	管卡8mm	CLIP 8mm	4
120	7	7104-3.5*7.5-EEC	真空管 370mm	VACUUM HOSE, 1 (3.5×7.5 370mm)	370m
121	8	9503-1. 2*7-B	管夹7mm	CLIP 7mm	2
122	9	7102-4.5*8.5-EEC	油管280mm	FUEL HOSE, 1 (4.5×8.5 280mm )	280m
123	10	QBK-44300-0000	燃油过滤器	FUEL FILTER ASSY.	1
124	11	QBL-33200-0000	油位传感器	SENDER UNIT	1
125	12	QBL-33202-0000	传感器压板	FUEL SENSOR	1
126	13	QBL-33201-0000	燃油传感器密封圈	SENDER UNIT GASKET	1
127					

	A	B	C	D	E
128	<b>F-8座垫总成 SEAT ASSY</b>				
129					
130	Ref No	Part No	Chinese	Description	Qty
131	1	QBL-43100-0000	座垫组件	SEAT ASSY.	1
132	2	9202-M6-A	法兰螺母M6	FLANGE NUT M6	2
133	3	QBG-42001-0000	杂物箱	LUGGAGE BOX	1
134	4	QBG-42002-0000	杂物箱内盖	COVER	1
135	5	9103-M6×16-A	螺栓M6×16	FLANGE BOLT 6×16	3
136	6	9319-6*18*1.6-A3H	平垫圈6	WASHER, SPRING (6)	4
137	7	9165-ST4. 8*12-A	自攻螺钉ST4.8×12	TAPPING SCREW 4.8×12	4
138	8	QBG-41410-0000	货架支座	REAR CARRIER BRACKET	1
139	9	9151-M8*45-A	内六角螺栓 M8×45	SOCKET BOLT M8×45	2
140	10	9151-M8*85-A	内六角螺栓 M8×85	SOCKET BOLT M8×85	1
141	11	QBG-32B00-0000	后装饰灯	LIGHT,ADORNMENT	1
142	12	QBG-41420-1000	后扶手	COVER REAR CARRIER	1
143	13	QBG-41802-1000	后扶手小盖		1
144	14	QBG-41420-0000	后货架	RR.ARMREST (MODEL 1)	1
145	15	9147-M6*16-E	十字盘头M6×16	TAPPING SCREW M6×16	1

	A	B	C	D	E
146	<b>F-9后轮总成 REAR WHEEL ASSY</b>				
147					
148	<b>Ref No</b>	<b>Part No</b>	<b>Chinese</b>	<b>Description</b>	<b>Qty</b>
149	1	QBE-52001-0000	轮胎 3.5-10	TIRE 3.5-10	1
150	2	QB6-54100-0000	后轮辋(前碟后鼓状态)	WHEEL.RR.CASTING	1
151	3	9318-16*30*3	垫圈 16	WASHER, SPRING (16)	1
152	4	9214-M14*1.5-A	螺母M14×1.5	NUT,U,14MM	1
153	5	QBK-52020-0000	气门嘴(弯)	VALVE,RIM,TR412	1
154	6	QBK-57210-0000	后制动蹄块组件	SHOE ASS'Y.,BRAKE	1
155	7	9103-M6*30-E	螺栓 M6*30	BOLT M6*30	1
156	8	1B1-27002-0000	后制动摇臂	ARM,RR.BRAKE	1
157	9	1B1-27003-0000	扭簧	SPRING	1
158	10	1B1-27005-0000	后制动凸轮	CAM,RR.BRAKE	1
159	11	QBK-57211-0000	后制动蹄块弹簧	SPRING, SHOE ASS' Y.,BRAKE	2

	A	B	C	D	E
160	<b>F-10 车架总成 FRAME ASSY</b>				
161					
162	<b>Ref No</b>	<b>Part No</b>	<b>Chinese</b>	<b>Description</b>	<b>Qty</b>
163	1	QBG-41100-0000	车架焊接组件 (风冷)	FRAME COMP.	1
164	2	QBK-53002-0000	吊挂轴M12*1.25*280	BOLT, ENGINE HANGER(M12×1.25×280)	1
165	3	9214-M12*1.25-A	螺母M12×1.25	FLANGE U NUT M12×1.25	1
166	4	QBK-41201-0000	吊架螺栓	E/G MOUNTING BOLT	2
167	5	9214-M12*1.25-A	螺母 M10×1.25	FLANGE U NUT M10×1.25	2
168	6	QBG-41210-0000	发动机吊挂组件	HANGER COMP ENGINE	1
169	7	QBM-41211-0000	防震垫	DAMPER	2
170	8	QBM-41212-0000	缓冲弹簧	SPRING	2
171	9	QBL-47120-0000	座垫锁座组件	SEAT CATCH COMP.	1
172	10	9105-M6*16-A	螺栓M6×16	FLANGE BOLT M6×16	6
173	11	QBG-41060-0000	油箱托架	CARRIER BRACKET	1
174	12	QBG-41020-0000	电器支架 (风冷)	FRONT PANEL BRACKET	1
175	13	QBK-82001-0000	车架标牌	FRAME BODY NO. PLATE	1
176	14	9901-3.2*9-AL	抽芯铆钉3.2×9	RIVET3.2×9	1
177	15	QBG-41040-0000	右脚踏板支架	RIGHT BRACKET, FLOOR	1
178	16	QBG-41030-0000	左脚踏板支架	LEFT BRACKET, FLOOR	1
179	17	QBG-41070-0000	座垫锁座支架	BRACKET, SEAT LOCK	2
180	18	QBG-41220-0000	单撑	SIDE STAND COMP.	1
181	19	QBG-41320-0000	双撑	MAIN STAND COMP.	1

	A	B	C	D	E
182	<b>F-10 车架总成 FRAME ASSY</b>				
183					
184	<b>Ref No</b>	<b>Part No</b>	<b>Chinese</b>	<b>Description</b>	<b>Qty</b>
185	20	QBM-41210-0000	单撑弹簧	TENSION SPRING,SIDE STAND	2
186	21	9105-M6*30-A	螺栓M6×30	FLANGE BOLT M6×30	2
187	22	QBK-41310-0000	双撑弹簧	TENSION SPRING,MAIN STAND	1
188	23	QBK-41301-0000	双撑轴	PIN	1
189	24	QBK-41321-0000	双撑缓冲橡胶	CUSHION, MID STAND	1
190	25	9404-2.5*25-AL	开口销	SPLIT PIN	1
191	26	9321-10*20*2	垫圈10×2	O-RING 10×2	1
192	27	9105-M6*12-A	螺栓M6×12	TAPPING SCREW M6×12	1
193	28	QBC-34600-0000	单撑熄火开关	CUTOFF SWITCH (MODEL2)	1
194	29	QBM-41201-0000	单撑螺栓	BOLT, SIDE STAND MOUNTING	1
195	30	9214-M6-A	螺母 M6	NUT M6	8

	A	B	C	D	E
196	<b>F-11后减震总成 REAR SHOCK ABSORBER ASSY</b>				
197					
198	<b>Ref No</b>	<b>Part No</b>	<b>Chinese</b>	<b>Description</b>	<b>Qty</b>
199	1	QBG-53200-0000	后减震器 (280)	RR. SHOCK ABSORBER.,MODEL1(280)	1
200	2	9105-M8*30-A	螺栓M8×30	FLANGE BOLT M8×30	1
201	3	9105-M10*1.25*40-A	螺栓M10×1.25×40	BOLT W/HOLE M10×1.25×40	1
202	4	9214-M10*1.25-A	螺母M10×1.25	NUT 10×1.25	1
203					
204					
205	<b>F-12机油箱总成 OIL TANK ASSY</b>				
206					
207	<b>Ref No</b>	<b>Part No</b>	<b>Chinese</b>	<b>Description</b>	<b>Qty</b>
208	1	QBM-44210-0000	机油壶	OIL TANK	1
209	2	QBM-44220-0000	机油壶盖	OIL TANK CAP	1
210	3	9105-M6*16-A3H	螺栓M6*16	BOLT M6×16	2
211	4	QBK-33300-0000	机油传感器	OIL LEVER GAUGE ASSY.	1
212	5	9503-1.2*10-B	管夹 10	CLIP 10	1

	A	B	C	D	E
213	<b>F-13前挡泥板 FRONT FENDER</b>				
214					
215	<b>Ref No</b>	<b>Part No</b>	<b>Chinese</b>	<b>Description</b>	<b>Qty</b>
216	1	QBE-42101-0000	前挡泥板	FRONT FENDER, SILVER	1
217	2	QBK-32500-0000	侧反射器 (E4)	REAR REFLECTOR(E4)	2
218	3	QBE-51010-0000	前泥板左支架	FRONT FENDER BRACKET, R	1
219	4	9202-M6-A	螺母M6	FLANGE NUT M6	2
220	5	QBE-51020-0000	前泥板右支架	FRONT FENDER BRACKET, L	1
221	6	9105-M6*12-E	螺栓M6×16	SCREW W/WASHER 6×16	4
222					
223	<b>F-14方向把护罩总成 HANDLE COVER</b>				
224					
225	<b>Ref No</b>	<b>Part No</b>	<b>Chinese</b>	<b>Description</b>	<b>Qty</b>
226	1	QBG-42201-0000	把手前罩	HANDLE COVER, UPPER MODEL1	1
227	2	QBG-42202-0000	把手后罩	HANDLE COVER,BOTTOM	1
228	3	9165-ST4. 2*12-A	自攻螺钉ST4. 2×12	TAPPING SCREW 4.2×12	4
229	4	QBF-81700-0000	后视镜组件	REAR VIEW MIRROR ASSY.	1
230	5	9147-M5×25-A	螺钉M5×25	BOLT M5×25	1
231	6	9105-M6*16-A	螺栓M6×16	TAPPING SCREW M6×16	2
232	7	9319-5*10*1.6-B	垫圈 5	WASHER, PLAIN (5)	1
233					

	A	B	C	D	E
234	<b>F-15 前面板总成 COVER.FB ASSY</b>				
235					
236	Ref No	Part No	Chinese	Description	Qty
237	1	QBG-42308-0000	前围	MOTHERBOARD, FRONT COVER	1
238	2	QBG-42302-0000	前面板	FRONT SHIELD	1
239	3	9165-ST4. 2*12-A	自攻螺钉ST4.2×12	TAPPING SCREW 4.2×12	2
240	4	9147-M6*16-E	十字盘头M6×16	TAPPING SCREW M6×16	1
241					
242					
243					



	A	B	C	D	E
244	<b>F-16 脚踏板总成 /撑架FOOTREST/STAND</b>				
245					
246	<b>Ref No</b>	<b>Part No</b>	<b>Chinese</b>	<b>Description</b>	<b>Qty</b>
247	1	QBG-42505-0000	底罩	BOTTOM COVER	1
248	2	QBG-42401-0000	踏脚板	FLOOR	1
249	3	QBG-42402-0000	蓄电池盖	BATTERY COVER	1
250	4	9105-M6*12-A	螺栓M6×12	TAPPING SCREW M6×12	1
251	5	9202-M6-A	螺母M6	FLANGE NUT M6	3
252	6	9165-ST4. 2*12-A	自攻螺钉ST4.2×12	TAPPING SCREW 4.2×12	12
253	7	9105-M6*30-A	螺栓M6×30	TAPPING SCREW M6×30	1
254	8	QBG-42501-0000	工具箱前部	LEG SHIELD, FRONT	1
255	9	QBG-42509-0000	工具箱后部	LEG SHIELD, BACK	1
256	10	QBG-42003-0000	蓄电池盒	BATTERY BOX	1
257	11	9221-M4.2*18*11-A	夹子螺母4.2	SPRING NUT 4MM	8
258	12	9165-ST4. 8*12-A	自攻螺钉ST4.8×12	TAPPING SCREW 4.8×12	3
259	13	QBG-42503-0000	挂钩	HOOK, HELMET	1
260	14	QBG-42502-0000	号码盖	INSPECT COVER	1

	A	B	C	D	E
261	<b>F-17左右侧盖总成 SIDE COVER</b>				
262					
263	<b>Ref No</b>	<b>Part No</b>	<b>Chinese</b>	<b>Description</b>	<b>Qty</b>
264	1	QBG-42603-0000	杂物箱前罩	CENTER COVER	1
265	2	9165-ST4.8*12-A	自攻螺钉ST4.8×12	TAPPING SCREW 4.8×12	2
266	3	QBG-42605-0000	左侧盖	REAR LEFT DECO PANEL	1
267	4	QBG-42606-0000	右侧盖	REAR RIGHT DECO PANEL	1
268	5	QBG-42609-0000	油箱上盖	LEFT SIDE COVER	1
269	6	QBG-42705-0000	后小护条	REAR COVER	1
270	7	QBG-42508-0000	右边条	RIGHT MIO SIDE PANEL	1
271	8	QBG-42507-0000	左护条	LEFT MIO SIDE PANEL	1
272	9	9221-M6*18*11-A	插片M6	SPRING NUT M6	1
273	10	9165-ST4.2*16-A	自攻螺钉ST4.2×16	TAPPING SCREW 4.2×16	2
274	11	9105-M6*12-A	螺栓M6×12	TAPPING SCREW M6×12	2
275	12	QBG-42503-1000	挂钩	HOOK, HELMET	1
276	13	9202-M6-A	螺母M6	NUT M6	1
277	14	9319-6*18*1.6-A	垫圈 6	WASHER, PLAIN (6)	1
278	15	9105-M6*25-A	螺栓M6×25	TAPPING SCREW M6×25	1
279	16	9165-ST4.8*16-A	自攻螺钉ST4.8×16	TAPPING SCREW 4.8×16	6
280	17	9165-ST4.2*12-A	自攻螺钉ST4.2×12	TAPPING SCREW 4.2×12	4
281	18	9147-M5×12-A	十字盘头螺丝M5×12	SCREW M5×12	2

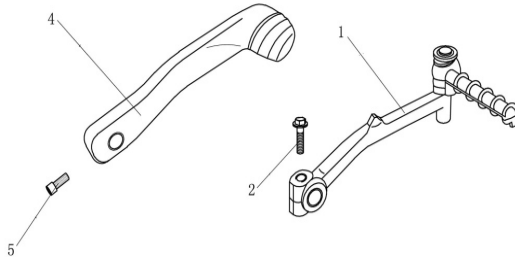
	A	B	C	D	E
282	<b>F-18后挡泥板总成 REAR FENDER ASSY.</b>				
283					
284	<b>Ref No</b>	<b>Part No</b>	<b>Chinese</b>	<b>Description</b>	<b>Qty</b>
285	1	QBG-42701-0000	后泥板	LICENSE BRACKET	1
286	2	9204-M6*20-E	盖形螺母	ACORN NUT	2
287	3	9105-M6*16-A	螺栓M6×16	TAPPING SCREW M6×16	1
288	4	QBG-42704-0000	后内泥板	REAR FENDER	1
289	5	9202-M6-A	螺母M6	NUT M6	1
290					
291	<b>F-19仪表 SPEEDOMETER</b>				
292					
293	<b>Ref No</b>	<b>Part No</b>	<b>Chinese</b>	<b>Description</b>	<b>Qty</b>
294	1	QBG-33100-0000	仪表总成	SPEEDOMETER COMP.MODEL1	1
295	2	QBG-33101-0000	灯泡	BULB	4
296	3	QBG-33212-0000	仪表电缆	WIRE, SPEEDOMETER COMP.MODEL1	1
297	4	9165-ST4. 2*16-A	自攻螺钉 ST4.2×16	TAPPING SCREW ST4.2×12	3
298	5	QB6-46040-0000	里程线	SPEEDOMETER CABLE COMP.	1
299					

	A	B	C	D	E
300	<b>F-20灯具总成 LIGHTS ASSY.</b>				
301					
302	<b>Ref No</b>	<b>Part No</b>	<b>Chinese</b>	<b>Description</b>	<b>Qty</b>
303	1	QBG-32200-0000	尾灯组件	TAIL LIGHT ASSY.	1
304	2	9221-M4.2*18*11-A	夹子螺母4.2	SPRING NUT 4MM	2
305	3	6220-M5-A	插片M6	SPRING NUT M6	2
306	4	QBG-32410-0000	前左转向灯	FLASHER LIGHT ASSY., L	1
307	5	QBG-32420-0000	前右转向灯	FLASHER LIGHT ASSY., R	1
308	6	QBG-32100-0000	前大灯	HEAD LIGHT ASSY.	1
309	7	9165-ST4. 2*12-A	自攻螺钉 ST4.2*12	TAPPING SCREW ST4.2*12	6
310	8	QBG-32101-0000	前大灯灯泡(12V35W)	BULB ((12V35W)	1
311	9	QBG-32311-0000	转向灯灯泡 (12V10W)	BULB (12V10W)	4
312	10	QBG-32A00-0000	位灯组件	FRONT POSITION LIGHT	1
313	11	QBK-32600-0000	后反射器	REAR RETRO REFLECTING DEVICE	1
314	12	QBG-32201-0000	尾灯灯泡 (12V 21W/5W)	BULB (12V 21W/5W)	1
315	13	QBG-32A01-0000	前位灯灯泡	BULB	1
316	14	9202-M6-A	螺母M6	NUT M6	1
317					

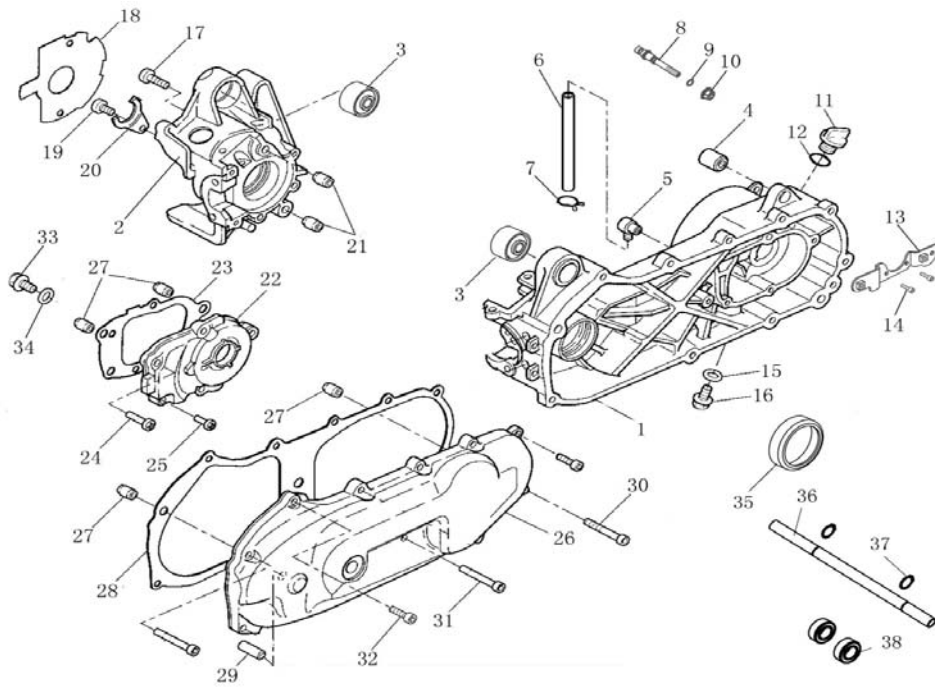
	A	B	C	D	E
318	<b>F-21电器总成I ELECTRICAL EQUIPMENT I</b>				
319					
320	<b>Ref No</b>	<b>Part No</b>	<b>Chinese</b>	<b>Description</b>	<b>Qty</b>
321	1	QBK-36300-1000	蓄电池12V,4AH	BATTERY ASSY.(12V,4AH)	1
322	2	9105-M6*16-A	螺栓M6×16	SCREW M6×16	4
323	3	QBL-47100-0000	套锁组件	LOCK ASSY.	1
324	4	QBK-35200-0000	点火线圈	IGNITION COIL ASSY.	1
325	5	QBK-35201-0000	点火线圈帽	CAP ASSY.SPARK PLUG	1
326	6	QBG-31100-0000	主电缆	WIRE HARNESS ASSY	1
327	7	QBK-31101-0000	保险丝	FUSE 10A,250V	1
328	8	9105-M6*20-A	螺栓M6×20	SCREW M6×20	2
329	9	QBK-32800-0000	闪光器	FLASHER	1
330	10	QBK-35100-0000	点火器 (不限速)	C.D.I. UNIT COMP,ASSY	1
331	10	QBK-35100-1000	点火器 (限速8000rpm)	C.D.I. UNIT COMP,ASSY(AC,LIMIT 8000rpm)	1
332	10	QBK-35100-2000	点火器 (限速6500rpm)	C.D.I. UNIT COMP,ASSY(AC,LIMIT 6500rpm)	1
333	11	QBK-36100-0000	稳压器	REGULATOR COMP.	1
334	12	9105-M6*12-A	螺栓M6×12	SCREW M6×12	2
335	13	QBK-32900-0000	喇叭	HORN	1
336	14	QBK-35300-0000	继电器	STARTER RELAY COMP, ASSY	1
337	15	QBK-36200-0000	电阻	RESISTANCE	1
338	16	9501-3*200	扎带200mm	BAND 200MM	10
339					

	A	B	C	D	E
340	F-22	随车工具	TOOL KIT		
341					
342	Ref No	Part No	Chinese	Description	Qty
343	1	QBK-81105-0000	工具袋	TOOLS BAG	1
344	2	QBK-81004-0000	套筒扳手	WRENCH, EVE (18×19)	1
345	3	QBK-81001-0000	两用螺丝刀	SCREW DRIVER, DOUBLE USE	1
346	4	QBK-81002-0000	起子手柄	HANDLE, SCREW DRIVER	1
347	5	QBK-81003-0000	双头扳手	SPANNER	1
348	6	QBK-81006-0000	内六角扳手		
349	7	QBK-81100-0000	随车工具	TOOL KIT	1

F-26 发动机附件 ENGINE ATTACHMENT				
Ref No	Part No	Chinese	Description	Qty
1	1B1-17100-000E	起动踏杆 (铬)	STARTING SHAFT,Cr	1
2	9105-M6*25-E	螺栓M6×25	BOLT M6×25	1
	1B1-17101-0000	起动踏杆 (铝)	STARTING SHAFT,ALL	1
	1B1-17101-0028	起动踏杆 (铝、黑)	STARTING SHAFT,(ALL,BLACK)	1
4	1B1-17101-0022	起动踏杆 (铝、银白)	STARTING SHAFT,(ALL,WHITE)	1
5	9151-M6*25-E	内六角螺钉M6×25	SCREW M6×25	1

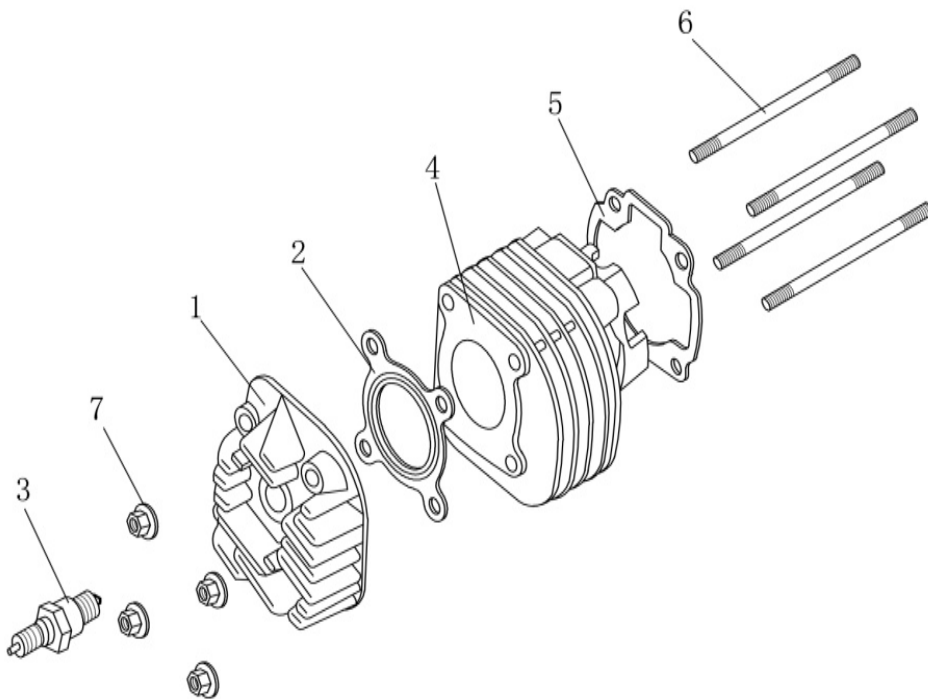


E-1 曲轴箱体 CRANK CASE					
Ref No	Part No	Chinese	Description	Qty	
1	1B2-11001-0000	左曲轴箱	CRANKCASE,LH	1	
2	1B2-11002-0000	右曲轴箱	CRANKCASE,RH	1	
3	1B2-11017-0000	减震套10×35×20	GROMMET	2	
4	1B1-11011-000	减震套	GROMMET	1	
5	1B2-11014-0000	通气塞	BEARTHER	1	
6	1B2-11015-0000	通气管	HOSE	1	
7	9503-1.2*7-C	钢丝型弹性环箍7	CIRCLP	1	
8	1B1-11005-0000	制动蹄块销轴	BRAKE SHOE ANCHOR PIN ASSY.	1	
9	9601-6.8*1.9-NB	O型密封圈 6.8×1.9	O-RING	1	
10	9213-M8-C	螺母M8	NUT 8	1	
11	1B1-11006-0000	螺塞	OIL PLUG	1	
12	9601-14*2.65-NB	O型密封圈 14×2.65	O-RING	1	
13	1B2-11016-000C	空滤器支架	BRACKET	1	
14	9860-M5*16-D	十字槽 盘头螺钉组合M5×1	SCREW M5×16	2	
15	9301-8*17.5*2-CU	垫圈8×17.5×2	PLATE WASHER	1	
16	9105-M8*16-C	螺栓M8×16	BOLT M8×16	1	
17	9103-M6*35-C	螺栓M6×35	BOLT M6×35	6	
18	1B1-11008-0000	磁电机垫片	GASKET	1	
19	9103-M6*12-A	螺栓M6×12	BOLT M6×12	1	
20	1B1-11007-000H	油封压板	OIL SEAL HOLDER	1	
21	9402-12*16	定位销12×16	DOWEL PIN	2	
22	1B2-11003-0000	齿轮室盖	CRANKCASE COVER	1	
23	1B2-11012-0000	齿轮室盖垫片	GASKET, CRANKCASE COVER	1	
24	9103-M6*35-C	螺栓M6×35	BOLT M6×35	2	
25	9103-M6*25-C	螺栓M6×25	BOLT M6×25	3	
	1B2-09001-0000	左盖 (本色)	L CRANKCASE COVER	1	
	1B2-09001-0022	左盖 (银白)	L CRANKCASE COVER, silver	1	
26	1B2-09001-0028	左盖 (黑色)	L CRANKCASE COVER, black	1	
27	9402-10*14	定位销10×14	DOWEL PIN	4	
28	1B1-09002-0000	左盖垫片	GASKET,L CRANKCASE	1	
29	1B1-09003-0000	销轴	IDLE GEAR	1	
30	9103-M6*35-E	螺栓M6×35	BOLT M6×35	2	
31	9103-M6*65-E	螺栓M6×65	BOLT M6×65	1	
32	9103-M6*25-E	螺栓M6×25	BOLT M6×25	8	
33	9103-M8*12-C	螺栓M8×12	BOLT M8×12	1	
34	9301-8.5*18.5*2-F	垫圈8.5×18.5×2	PLATE WASHER	1	
35	1B1-11004-0000	离合器内圈	BOSS,GEAR	1	
36	1B2-27001-000B	曲轴箱固定轴257	AXLE, ENGINE MOUNT,257	1	LJ50QT-2L
37	9312-17-F	挡圈17	CIRCLIP	2	LJ50QT-2L
38	9701-6003-2RS	轴承6003-2RS	BEARING	2	LJ50QT-2L



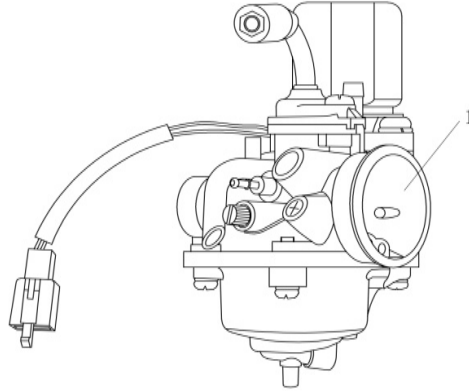
E-2 气缸总成 CYLINDER HEAD ASSY

Ref No	Part No	Chinese	Description	Qty	
1	1B1-02001-0000	气缸盖	HEAD, CYLINDER	1	
2	1B1-02002-0000	气缸盖衬垫	GASKET, CYLINDER HEAD	1	
3	1B1-02100-0000	火花塞	SPEAK PLUG	1	
4	1B1-05001-0000	气缸体	CYLINDER	1	
5	1B1-05002-0000	气缸体衬垫	GASKET, CYLINDER	1	
6	1B1-11013-000C	双头螺柱M7×112	STUD BOLT	4	
7	9202-M7*1-C	螺母M7	NUT M7	4	0,1

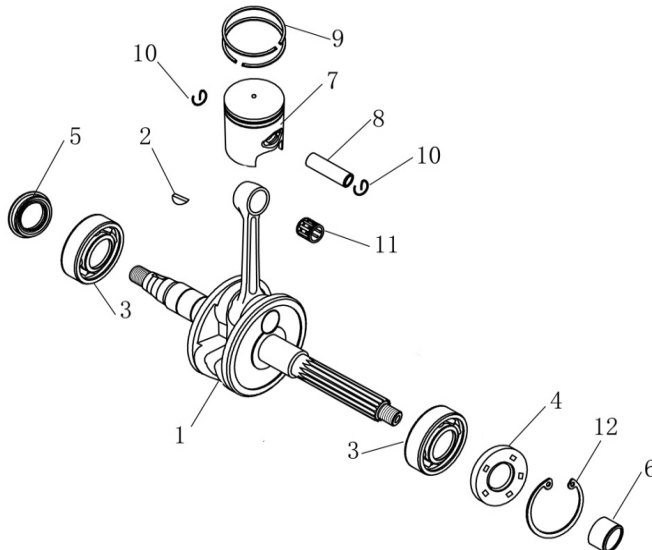




E-3 化油器分总成 CARBURETOR					
Ref No	Part No	Chinese	Description	Qty	
1	1B1-23000-1000	化油器TK Y16PE-	CARBURETOR ASSY.	1	LJ50QT-2L
	1B2-23000-2000	化油器TK-Y15P-	CARBURETOR ASSY.(45KM/H)	1	
	1B1-23000-1100	化油器MIKUNI VM16-56830 (25限速)	CARBURETOR ASSY.(25KM/H)	1	

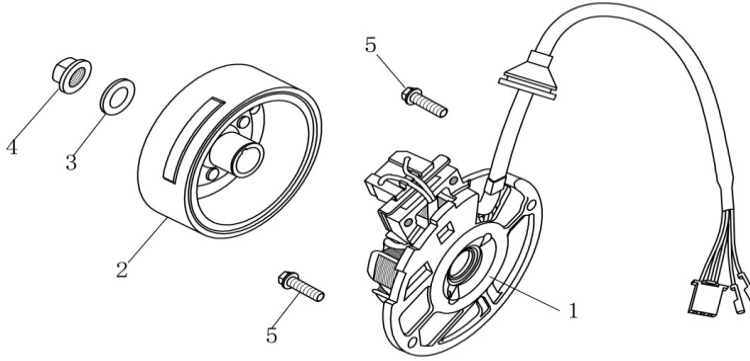


E-4 曲轴、活塞 CRANK SHAFT PISTON					
Ref No	Part No	Chinese	Description	Qty	
1	1B1-06200-0000	曲轴连杆组合	CRANKCHAFT, ASSY.	1	
2	1B1-06004-0000	半圆键3×5×13	WOODRUFF KEY	1	
3	9701-6204/P53	滚动轴承6204/P53	NEEDLE BEARING	2	
4	9602-FB20*42*8-NB	油封20×42×8	OIL SEAL NBR	1	
	9602-FB20*42*8-VI	油封20×42×8 (氟橡胶)	OIL SEAL VITON	1	
	9602-FB20*30*6.2-NB	油封20×30×6.2	OIL SEAL NBR	1	
5	9602-FB20*30*6.2-VI	油封20×30×6.2 (氟橡胶)	OIL SEAL VITON	1	
6	1B1-18208-0000	驱动轮限位套	COLLAR	1	
7	1B1-06100-0000	活塞组合	PISTON ASSY.	1	
8	1B1-06002-0000	活塞销	PISTON PIN	1	
9	1B1-06001-0000	楔形环	PISTON RING ASSY.	2	
10	1B1-06003-0000	卡环	CIRCLIP	2	
11	9704-K10*14*13	滚针轴承K10×14×13	NEEDLE BEARING	1	
12	9315-42-F	孔用弹性挡圈42	CIRCLIP	1	
13	9301-16*21*1-C	垫圈16×21×1	PLATE WASHER	1	



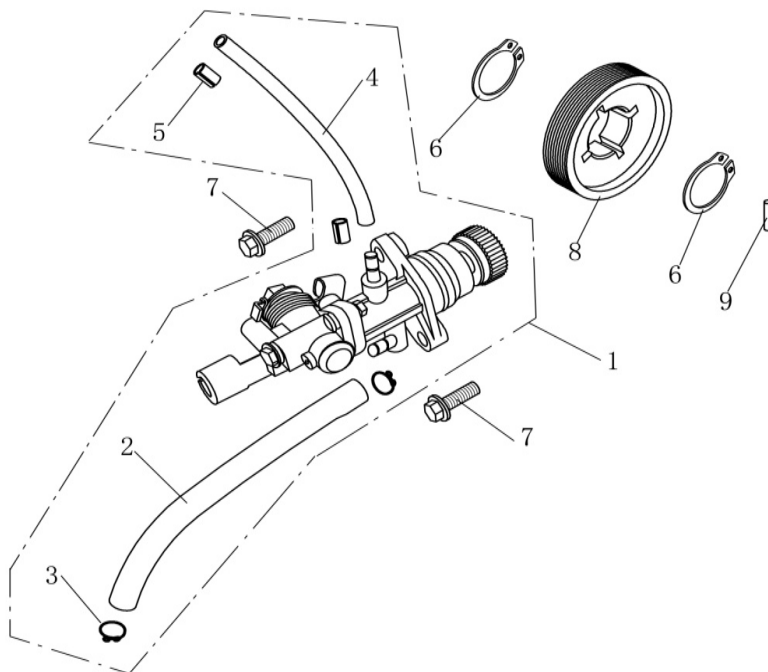
E-5 磁电机总成 MAGNETO ASSY.

Ref No	Part No	Chinese	Description	Qty
1	1B1-19100-0000	底板组件 (7级)	STATOR ASSY.7	1
	1B1-19100-1000	底板组件 (8级)	STATOR ASSY.8	1
2	1B1-19200-0000	飞轮组件 (7级)	ROTOR ASSY.7	1
	1B1-19200-1000	飞轮组件 (8级)	ROTOR ASSY.8	1
3	9301-12*24*2-C	垫圈12-140HV	WASHER	1
4	9203-M12*1.25-C	螺母M12×1.25	NUT M12×1.25	1
5	9103-M6*14-A	螺栓 M6×14	SCREW M6×14	2



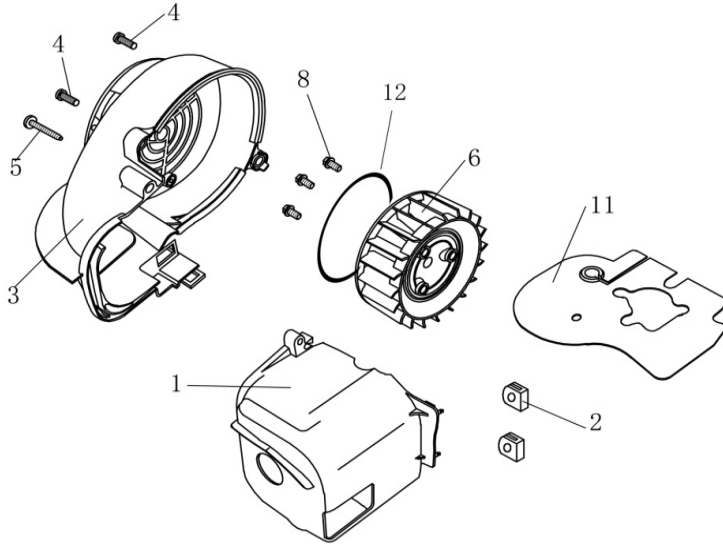
E-6 机油泵分总成 OIL PUMP ASSY.

Ref No	Part No	Chinese	Description	Qty
1	1B1-08100-2000	机油泵分总成50B (无摇)	OIL PUMP ASSY.	1
	1B1-08100-2001	机油泵分总成50B加长 (	OIL PUMP ASSY.	1
2	1B1-08101-0000	进油管	HOSE	1
3	9503-1*8-E	进油管卡簧	HOSE CLIP	2
4	1B1-08102-0000	出油管	HOSE	1
5	9503-0.8*5-E	出油管卡簧	HOSE CLIP	2
6	9312-19-F	挡圈19	CIRCLIP	2
7	9860-M5*16-D	十字槽 盘头螺钉组合M5×1	SCREW M5×16	2
8	1B1-08001-0000	蜗杆	PUMP DRIVE GEAR	1
9	1B1-08002-0000	销Φ3×14	PIN	1



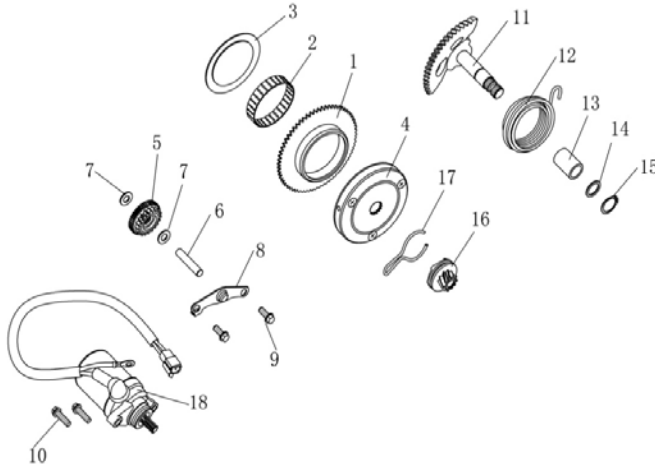
E-7 导风罩分总成 AIR COOLING SYSTEM

Ref No	Part No	Chinese	Description	Qty
1	1B1-21001-0000	气缸导风罩	COWLING,CYLINDER	1
2	1B1-21002-0000	橡胶套	GROMMET	2
3	1B1-21003-0000	风扇导风罩	COELING,EAN	1
4	9103-M6*20-A	螺钉 M6×20	BOLT M6×20	2
5	9165-ST6.3*38-D	自攻螺钉ST6.3×38	SCREW	1
6	1B1-21100-0000	风扇叶轮	EAN ASSY.	1
8	9103-M6*14-A	螺钉M6×14	SCREW M6×14	3
11	1B1-21004-0000	转折板	PLATE	1
12	9601-64*3-NB	O型密封圈 64×3	O-RING	1



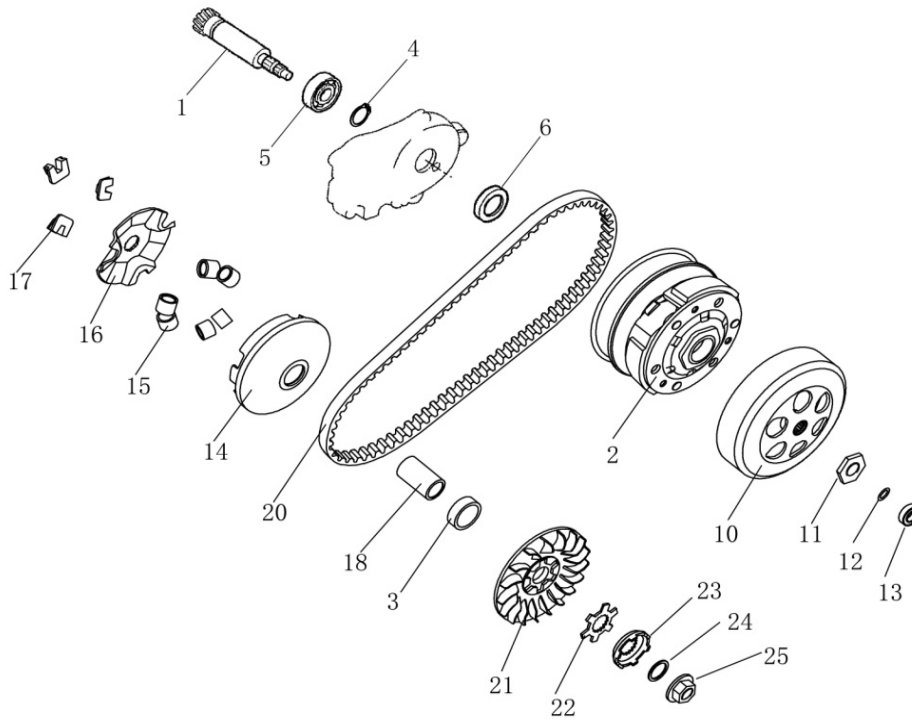
E-8 起动机总成 KICK STARTER ASSY.

Ref No	Part No	Chinese	Description	Qty
1	1B1-18207-0000	曲轴驱动齿轮	START GEAR ASSY.	1
2	1B1-18209-0000	滚针轴承26400	NEEDLE BEARING	1
3	9301-56*76*0.5-F	止推片 56×76×0.5	THRUST WASHER	1
4	1B1-18200-0000	单向离合器组合	START CLUTCH ASSY.	1
5	1B1-18300-0000	电起动传动齿轮	IDLE GEAR	1
6	1B1-18001-0000	销轴	IDLE GEAR SHAFT	1
39995	9301-8*16*1.5-AL	垫圈8×16×1.5	PLATE WASHER	1
39996	9301-8*16*2-C	垫圈8×16×2	PLATE WASHER	1
8	1B1-18002-000C	电起动齿轮压板	IDLE GEAR HOLDER	1
9	9103-M6*12-A	螺栓M6×12	BOLT M6×12	2
10	9151-M6*20-E	螺钉M6×20	SCREW M6×20	2
11	1B1-17200-0000	脚起动轴组件	SHAFT, KICK STARTER	1
12	1B2-17001-0000	脚起动轴弹簧	SPRING	1
13	1B1-17002-0000	脚起动轴套	BUSH	1
14	9301-15*28*1-F	垫圈15×28×1-F	WASHER KICK STARTER	1
15	9312-15-F	挡圈15	CIRCLIP	1
16	1B1-17300-0000	脚起动爪组件	KICK PINION ASSY.	1
17	1B1-17003-0000	脚起动爪卡簧	CLIP	1
18	1B1-18100-0000	起动机分总成	STARTING MOTOR ASSY.	1



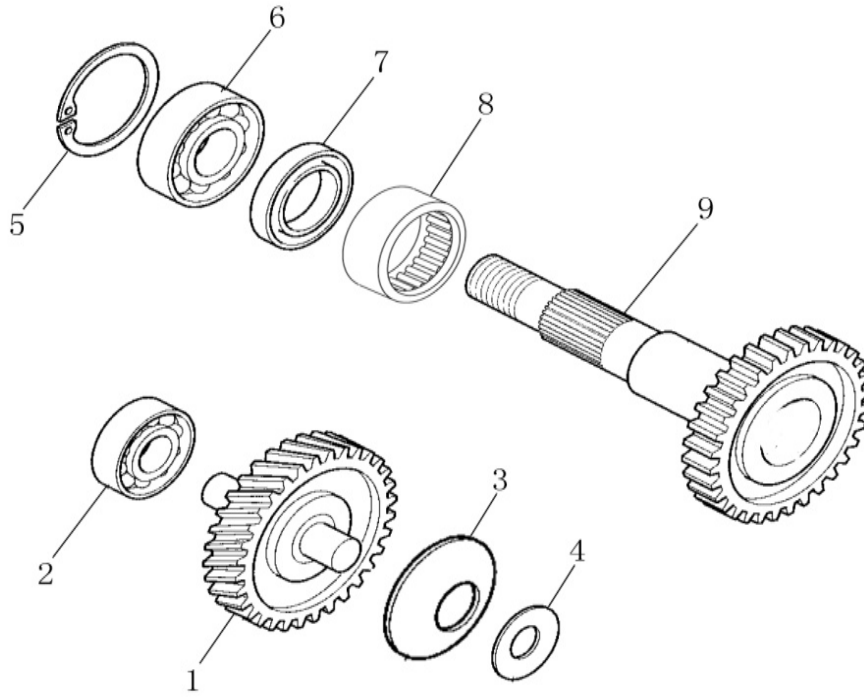
E-9 传动机构总成 CLUTCH ASSY.

Ref No	Part No	Chinese	Description	Qty
1	1B2-14001-0000	驱动轴13T	PRIMARY DRIVE GEAR	1
2	1B1-13400-0000	从动盘及离合器组件	DRIVEN PULLEY and CLUTCH ASSY.	1
3	1B1-13002-0000	限速套环 (3)	WASHER	1
4	9312-17-F	轴用挡圈17	CIRCLIP	1
5	9701-6003/P6	深沟球轴承6003/P6	BEARING	1
6	9602-FB17*28*5-NB	油封17×28×5	OIL SEAL	1
10	1B1-13300-0000	摩擦盘组件	HOUSING	1
11	9207-M10*1-B	螺母M10×1薄	NUT M10×1	1
12	9601-6.7*3-NB	O型密封圈 6.7×3	O-RING	1
13	9701-638-Z	轴承638Z	BEARING	1
14	1B1-13110-0000	滑动盘	FACE,MOVABLE DRIVE	1
15	1B1-13120-0000	滚珠	ROLLER	6
16	1B1-13101-0000	斜坡板	PLATE,MOVABLE DRIVE	1
17	1B1-13102-0000	缓冲块	DAMPER	3
18	1B1-13103-0000	滑套	COLLER	1
20	1B1-13200-0000	齿形三角皮带	V BELT, DRIVE	1
21	1B1-13104-0000	定盘	FACE, FIXED DRIVE	1
22	1B1-13105-0000	花键板	PLATE, WOODRUFF KEY	1
23	1B1-13001-0000	起动盘	STARTING DISC	1
24	9305-10*24*2-F	鞍形垫圈10×24×2	WASHER, SPRING	1
25	9203-M10*1.25-C	螺母M10×1.25	NUT M10×1.25	1



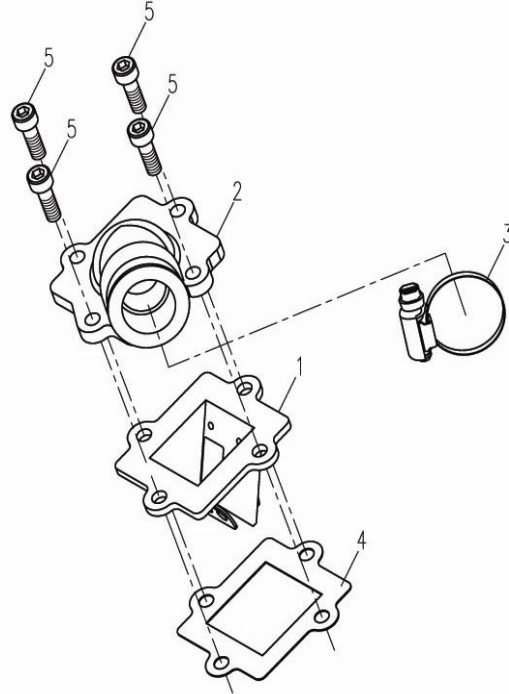
E-10 变速系统分总成 TRANSMISSION SYSTEM ASSY.

Ref No	Part No	Chinese	Description	Qty
1	1B2-14100-0000	中间轴组件13T/48T	SHAFT, IDLE	1
2	9701-6201/P6	轴承6201/P6	BEARING 6201	1
3	9305-12*60*0.5-F	鞍形12×60×0.5	WASHER, CONICAL SPRING	1
4	9301-12*25*1-F	垫圈12×25×1	WASHER,PLATE	1
5	9315-42-F	孔用弹性挡圈42	CIRCLIP 42	1
6	9701-6004-2RS	深沟球轴承6004-2RS	BEARING 6004-2RS	1
7	9602-FB25*35*6-NB	油封25×35×6	OIL SEAL	1
8	9704-NK25*35*15	滚针轴承NK25×35×15	BEARING	1
9	1B2-14200-0000	输出轴组件42T	DRIVE AXLE ASSY	1



E-11 进气阀分总成 (1) REED VALVE ASSY.1

Ref No	Part No	Chinese	Description	Qty
1	1B1-22100-0000	进气簧片阀分总成	REED VALVE ASSY	1
2	1B1-22200-0000	进气管	MANIFOLD,INTAKE	1
3	1B1-22001-0000	卡箍	HOSE CLAMP ASSY	1
4	1B1-22002-0000	簧片阀垫片	GASKET,VALVE SEAT	1
5	9151-M6*20-E	螺钉M6×20	BOLT,SOCKET M6*20	4



E-11 进气阀分总成 (2) REED VALVE ASSY.2

Ref No	Part No	Chinese	Description	Qty
1	1B1-22100-0000	进气簧片阀分总成	REED VALVE ASSY	1
2	1B2-22201-0000	进气管	MANIFOLD,INTAKE	1
3	1B1-22001-0000	卡箍	HOSE CLAMP ASSY	2
4	1B1-22002-0000	簧片阀垫片	GASKET,VALVE SEAT	1
5	9151-M6*25-E	螺钉M6*25	BOLT,SOCKET M6*25	4
6	1B1-22002-0000	簧片阀垫片	GASKET,VALVE SEAT	1
7	1B1-22202-0000	进气管胶套	HOSE,INTAKE	1

