

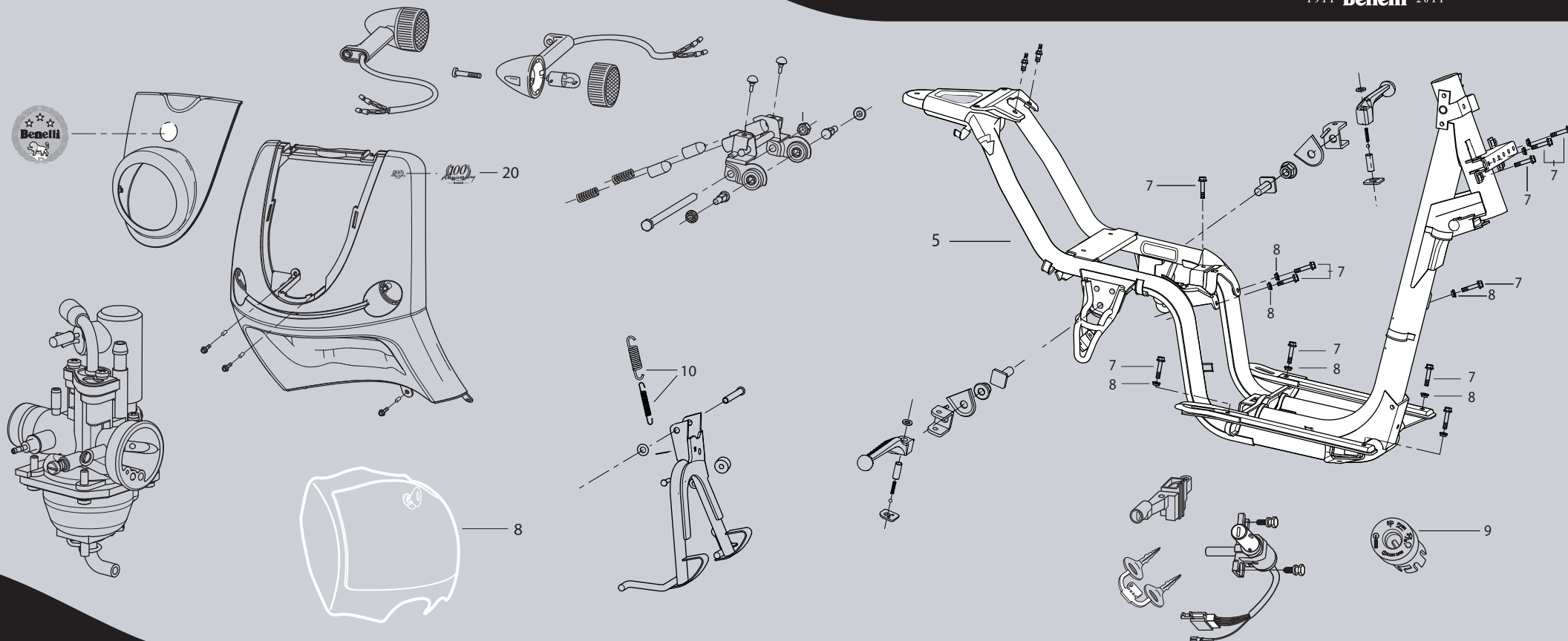


Pure Passion since 1911

MY 2011  
**Pepe**

**100<sup>th</sup>**  
*Anniversary*

1911 Benelli 2011



CATALOGO RICAMBI • SPARE PARTS CATALOGUE • CATALOGUE PIÉCES DETACHEES  
ERSATZTEILKATALOG • CATALOGO PIEZAS DE REPUESTO

QUESTO CATALOGO SERVE PER RICHIEDERE CON ESATTEZZA LE PARTI DI RICAMBIO.

NELLE ORDINAZIONI INDICARE: IL NUMERO DEI CODICI DEI PARTICOLARI SEGUITO DALLA DESCRIZIONE E LA QUANTITÀ DESIDERATA.

LE INDICAZIONI CON LE FRECCIE SI RIFERISCONO AI LATI DEL VEICOLO RISPETTO AL SENSO DI MARCIA.

I DISEGNI DELLE PARTI DI RICAMBIO SONO SOLO INDICATIVI E NON RAPPRESENTANO IL PEZZO IN OGGETTO.

I DATI CONTENUTI IN QUESTO CATALOGO SONO INDICATIVI E POSSONO ESSERE SOGGETTI A MODIFICHE SENZA IMPEGNO DI PREAVVISO.

THE PRESENT SPARE PARTS ORDER EXACTLY THE RIGHT SPARE PARTS.

WHEN ORDERING SPECIFY: THE PART'S CODE NUMBER FOLLOWED BY ITS DESCRIPTION AND QUANTITY NEEDED.

REFERENCE WITH ARROWS APPLY TO THE VEHICLE IN TERMS OF ITS DIRECTION OF MOVEMENT.

SPARE PARTS DRAWINGS ARE GENERAL AND DO NOT REPRESENT THE PART.

THE CONTENTS OF THIS CATALOGUE ARE GENERAL AND CAN UNDERGO CHANGES WITHOUT PRIOR NOTICE.

CE CATALOGUE PERMET DE COMMANDER CORRECTEMENT LES PIÈCES DÉTACHÉES.

LES COMMANDES DOIVENT ÊTRE PASSÉES EN INDIQUANT: LE NUMERO DE CODE DES PIÈCES DÉTACHÉES SUIVI DE LEUR DESCRIPTION ET QUANTITÉ DÉSIRÉE.

RÉFÉRENCE AVEC DES FLÈCHES SONT LES CÔTÉS DU VÉHICULE PAR RAPPORT AU SENS DE LA MARCHÉ.

LES PLANS DES PIÈCES DÉTACHÉES SONT FOURNIS SEULEMENT À TITRE INDICATIF ET NE REPRÉSENTENT PAS LA PIÈCE CONCERNÉE.

LES DONNÉES DE CE CATALOGUE SONT CITÉES SEULEMENT À TITRE INDICATIF ET PEUVENT ÊTRE L'OBJET DE MODIFICATIONS SANS AVIS PRÉALABLE.

DIESER ERSATZTEILKATALOG DIEN ZUR GENAUEN ANGABE DER TEILE BEI ERSATZTEILBESTELLUNGEN.

BEIERSATZBESTELLUNG IST FOLGENDES ANZUGEBEN: DIE BESTELLNUMMER DER ERSATZTEILE MIT DER ENTSPRECHENDEN BESCHREIBUNG UND GENAUE MENGE.

DIE ANGABEN MIT PFEILE BEZIEHEN SICH AUF DAS FAHRZEUG IN FAHRRICHTUNG.

DIE ZEICHNUNGEN DER ERSATZTEILE SIND NUR ALS HINWEISE GEDACHT UND STELLEN NICHT DAS BETROFFENE TEIL DAR.

BEI DEN IM KATALOG ANGEFÜHRTEN DATEN HANDELT ES SICH UM ANHALTSDATEN, DIE JEDERZEIT, OHNE VORANKÜNDIGUNG, GEÄNDERT WERDEN KÖNNEN.

EL PRESENTE CATÁLOGO SIRVE PARA PEDIR CON EXACTITUD LAS PARTES DE REPUESTO.

EN LOS PEDIDOS SE DEBE INDICAR: EL NÚMERO DE CÓDIGO DE LA PARTE Y A CONTINUACIÓN LA DESCRIPCIÓN Y CANTIDAD DESEADA.

LAS INDICACIONES CON LAS FLECHAS SE REFIEREN A LOS LADOS DEL VEHÍCULO RESPECTO DEL SENTIDO DE MARCHA.

LOS DISEÑOS DE LAS PARTES DE RECAMBIO SON SOLO INDICATIVOS Y NO REPRESENTAN LA PIEZA EN CUESTIÓN.

LOS DATOS CONTENIDOS EN EL PRESENTE CATÁLOGO SON INDICATIVOS Y PUEDEN MODIFICARSE SIN AVISO PREVIO.

1911

Benelli

2011



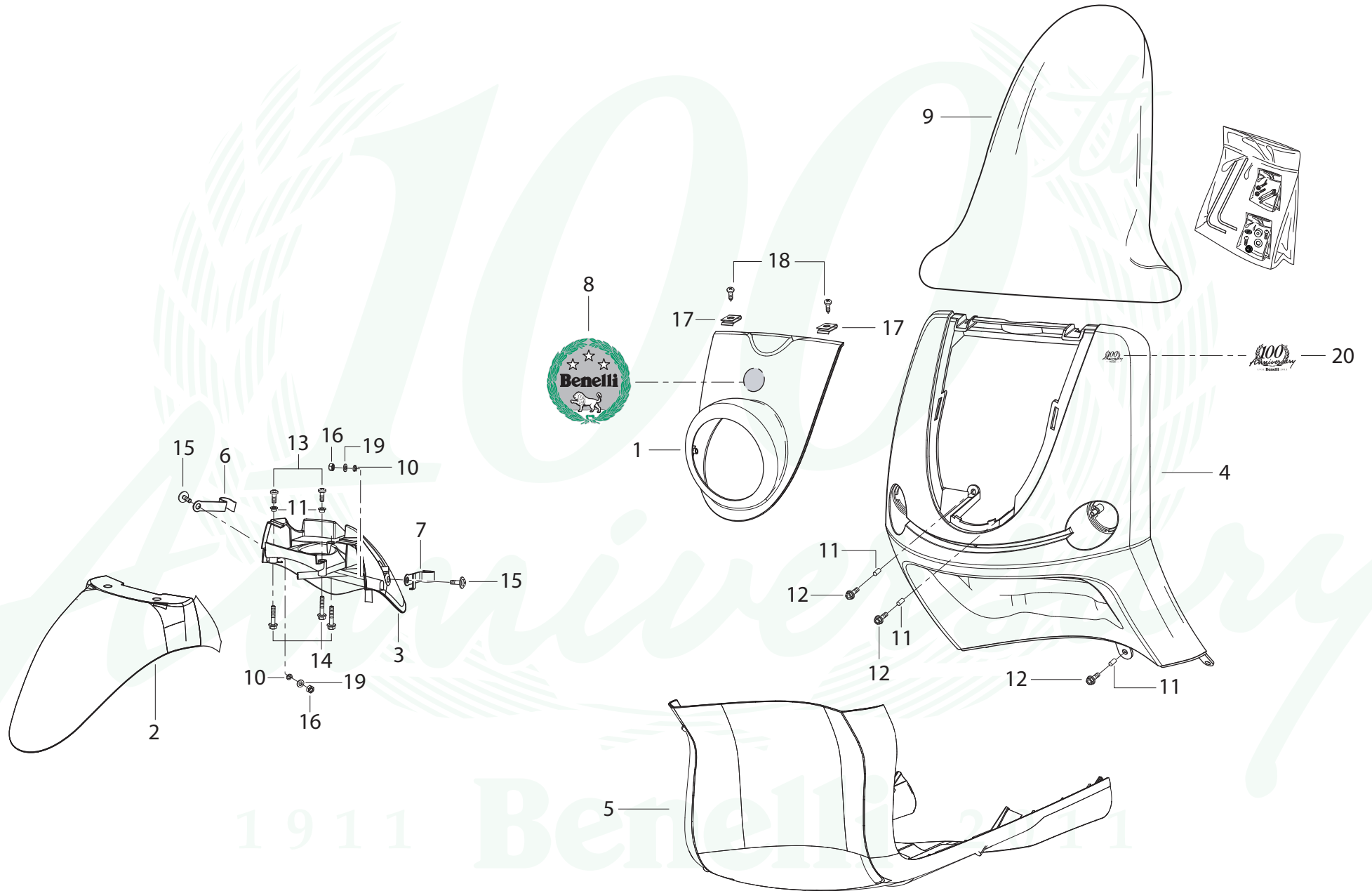
001	CARENATURE ANTERIORI	FRONT FAIRINGS	CARÉNAGES AVANT	SCHALE VORDER	BASTIDORS DELANTERA
002	CARENATURE POSTERIORI	REAR FAIRINGS	CARÉNAGES ARRIÈRE	SCHALE HINTER	BASTIDORS TRASERA
003	CARENATURE CENTRALI	CENTRAL FAIRINGS	CARÉNAGES CENTRAL	SCHALE ZENTRAL	BASTIDORS CENTRALES
004	MANUBRIO	HANDLEBAR	GUIDON	LENKER	MANILLAR
005	FANALE ANTERIORE	FRONT LIGHTS	ECLAIRAGE AVANT	VORDERSCHEINWERFER	ILLUMINACIÓN DELANTERA
006	FANALE POSTERIORE	REAR LIGHTS	ECLAIRAGE ARRIÈRE	HINTERSCHEINWERFER	ILLUMINACIÓN TRASERA
007	SOSPENSIONI	SUSPENSIONS	SUSPENSIONS	FEDERUNG	SUSPENSION
008	RUOTA ANTERIORE E POSTERIORE	FRONT AND REAR WHEELS	ROUES AVANT ET ARRIÈRE	VORDERRAD UND HINTERRAD	RUEDAS DELANTERA Y TRASERA
009	FRENI	BRAKES	FREINS	BREMSEN	FRENOS
010	SERBATOI	TANKS	RESERVOIR	TANKE	TANQUES
011	TELAIO	FRAME	CHASSIS	RAHMEN	CHASIS
012	ALIMENTAZIONE E SCARICO	INTAKE AND EXHAUST	ADMISSION ET ECHAPPEMENT	ANSAUGUNG UND AUSPUFF	ALIMENTACIÓN Y DESCARGA
013	COMPONENTI ELETTRICI	COMPONENTS ELECTRIC	COMPOSANTS ELECTRIQUE	ELEKTRISCHES BAUELEMENT	COMPONENTES ELÉCTRICO
014	IMPIANTO ELETTRICO	ELECTRIC SYSTEM	INSTALLATION ELECTRIQUE	ELEKTRISCHE ANLAGE	INSTALACIÓN ELÉCTRICA
015	CARTER MOTORE	CRANKCASE	CARTER MOTEUR	MOTORGEHÄUSE	CARTER MOTOR
016	TRASMISSIONE	TRANSMISSION	TRANSMISSION	BOWDENZÜGE	TRASMISIONES
017	GRUPPO TERMICO	THERMIC ASSEMBLY	GROUPE	VILEBREQUIN WARMESATZ ANGRIF	GRUPO TÉRMICO
018	IMBIELLAGGIO	CRANKSHAFT	THERMIQUE	DER PLEUELSTANGEN	ARTICULACIÓN BIELAS
019	VENTOLA ARIA ACCENSIONE	AIR FAN IGNITION	VENTILATEUR À AIR DEMARREUR	LUFTRAD ZÜNDUNG	VENTILADOR AIRE ARRANQUE
020	CARBURATORE POMPA OLIO	CARBURATEUR OIL PUMP	CARBURATEUR POMPE A HUILE	VERGASER ÖLPUMPE	CARBURADOR BOMBA ACEITE
020	ACCESSORI	ACCESSORIES	ACCESSOIRES	ZUBEHÖR	ACCESORIOS

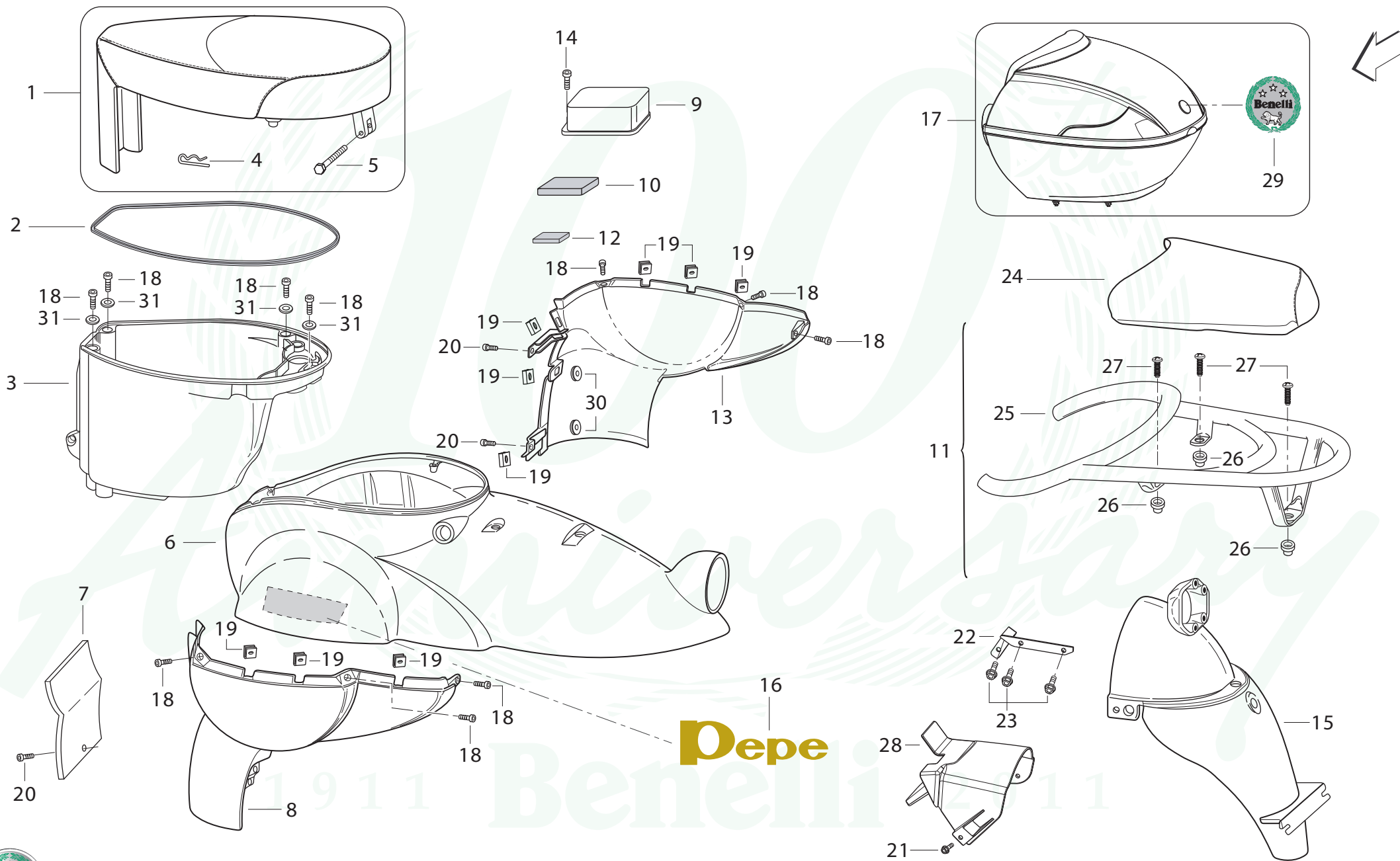
1911

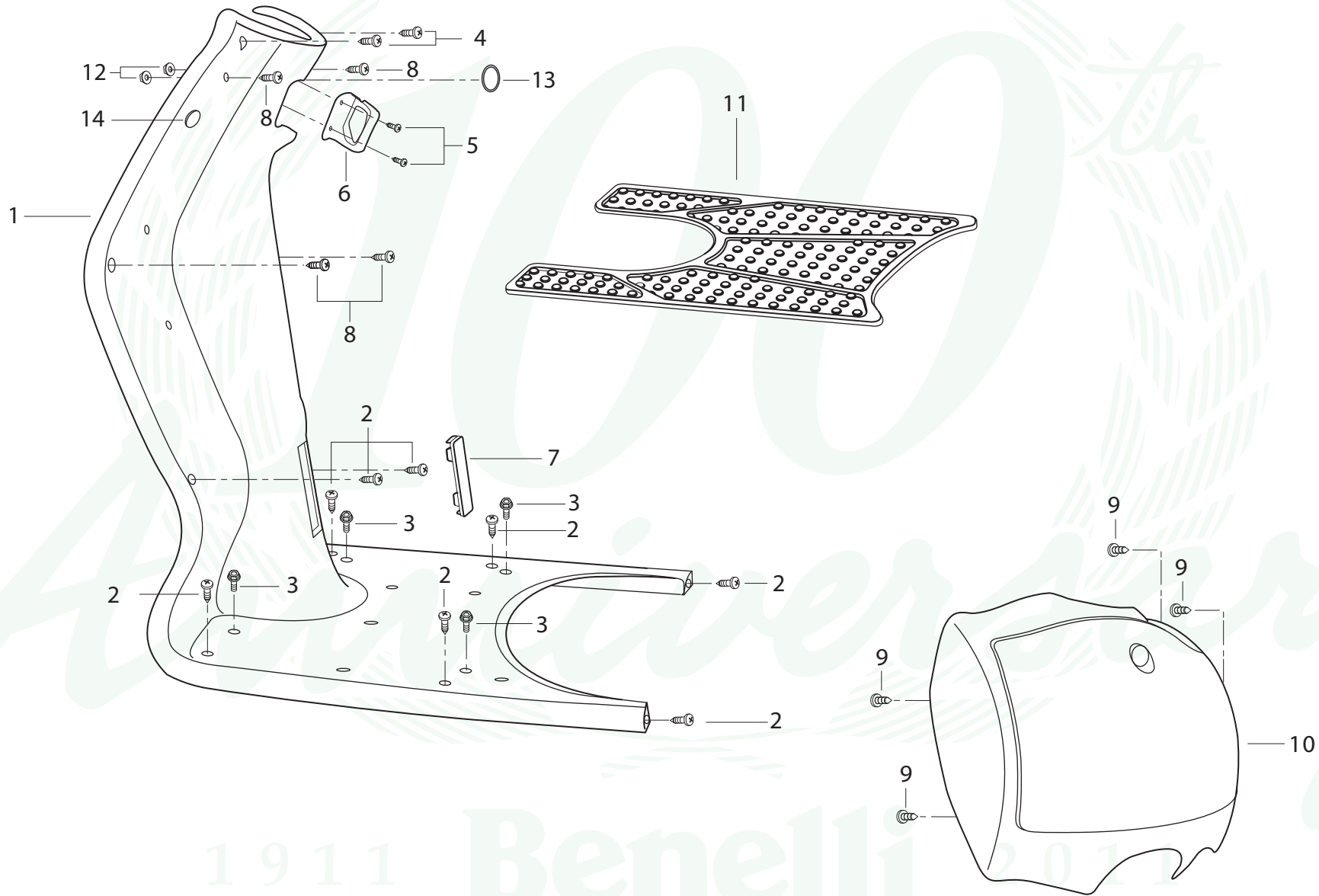
Benelli

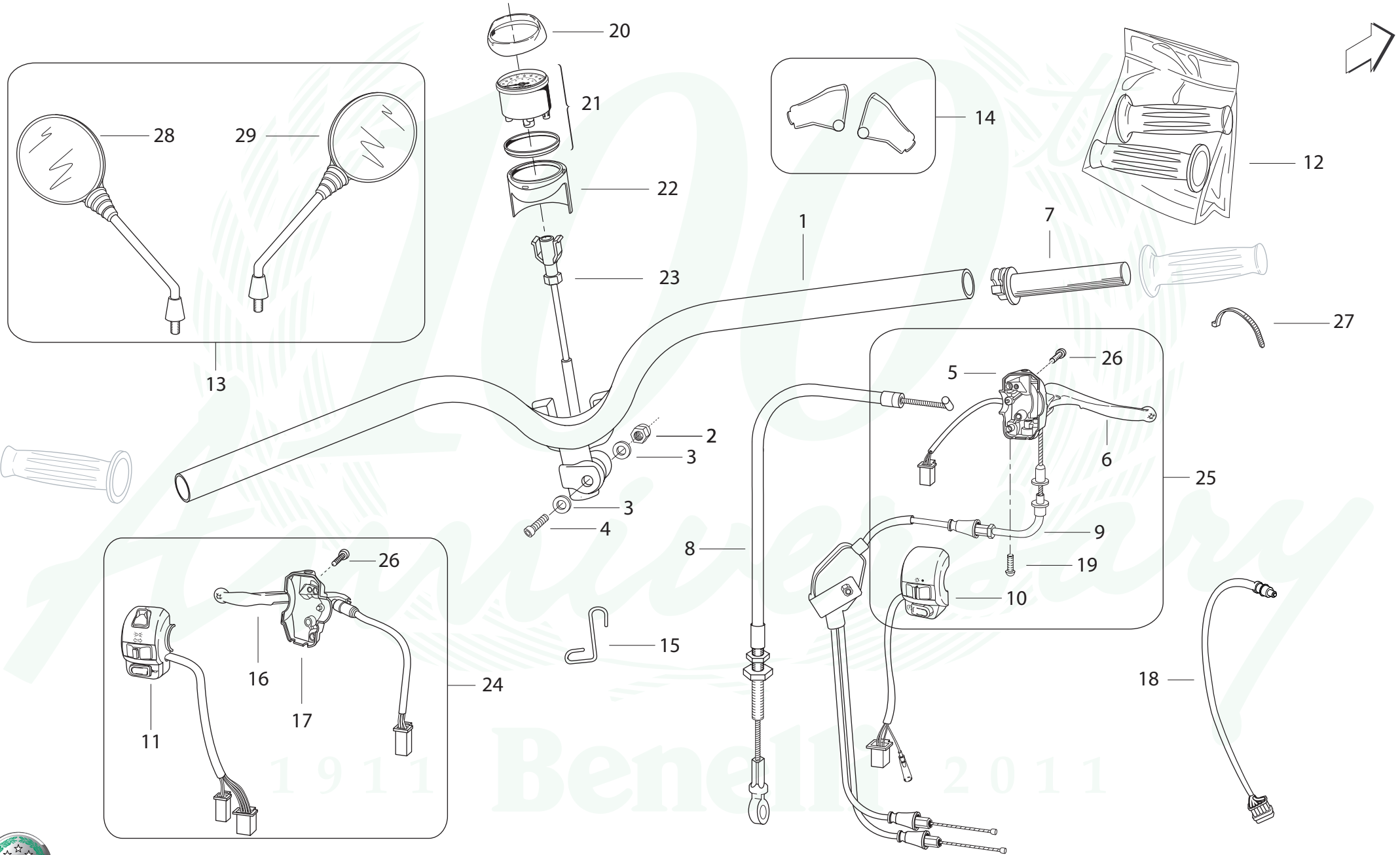
2011

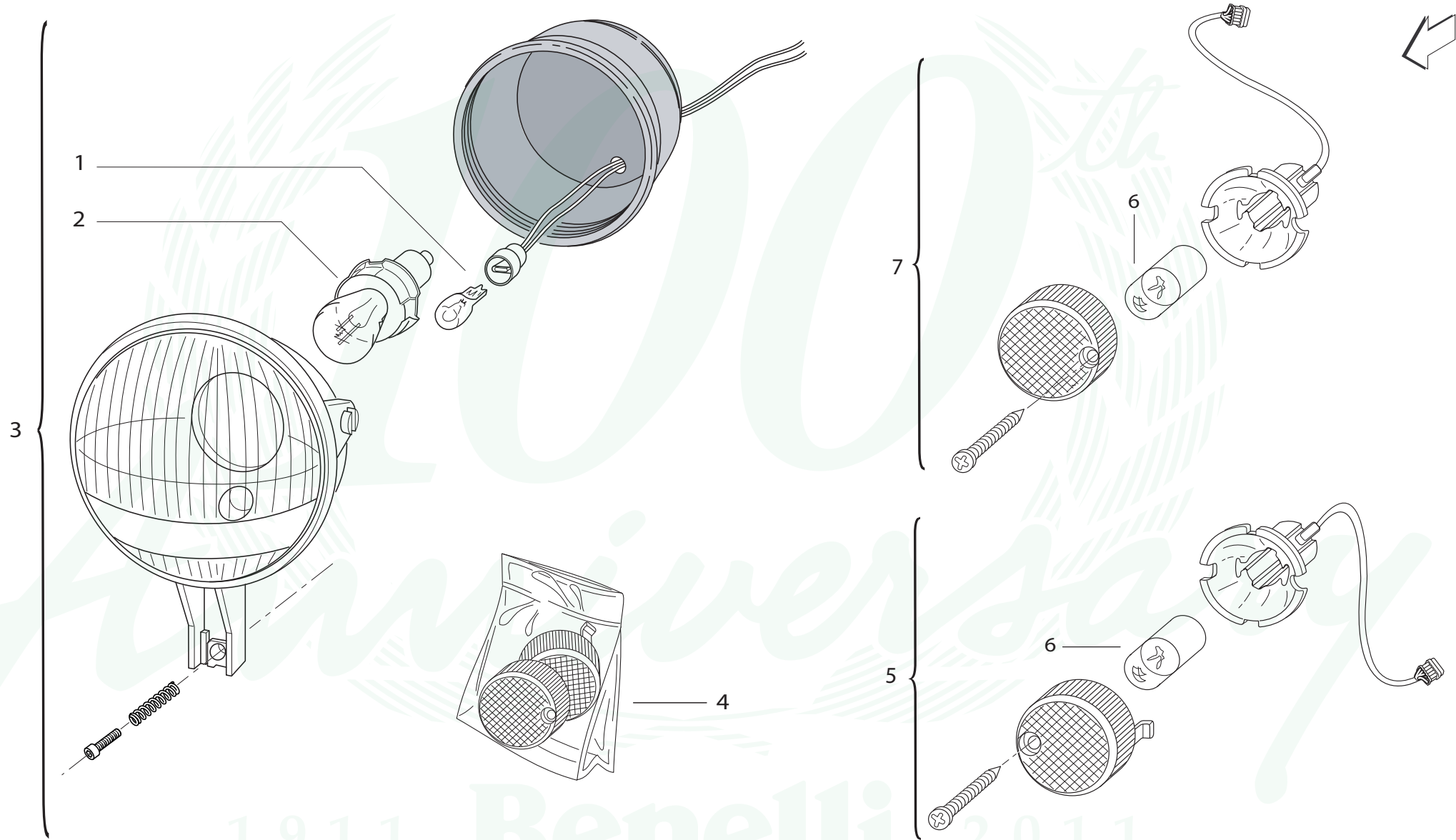















# FANALE POSTERIORE

 FANALE POSTERIORE

 REAR HEADLIGHT

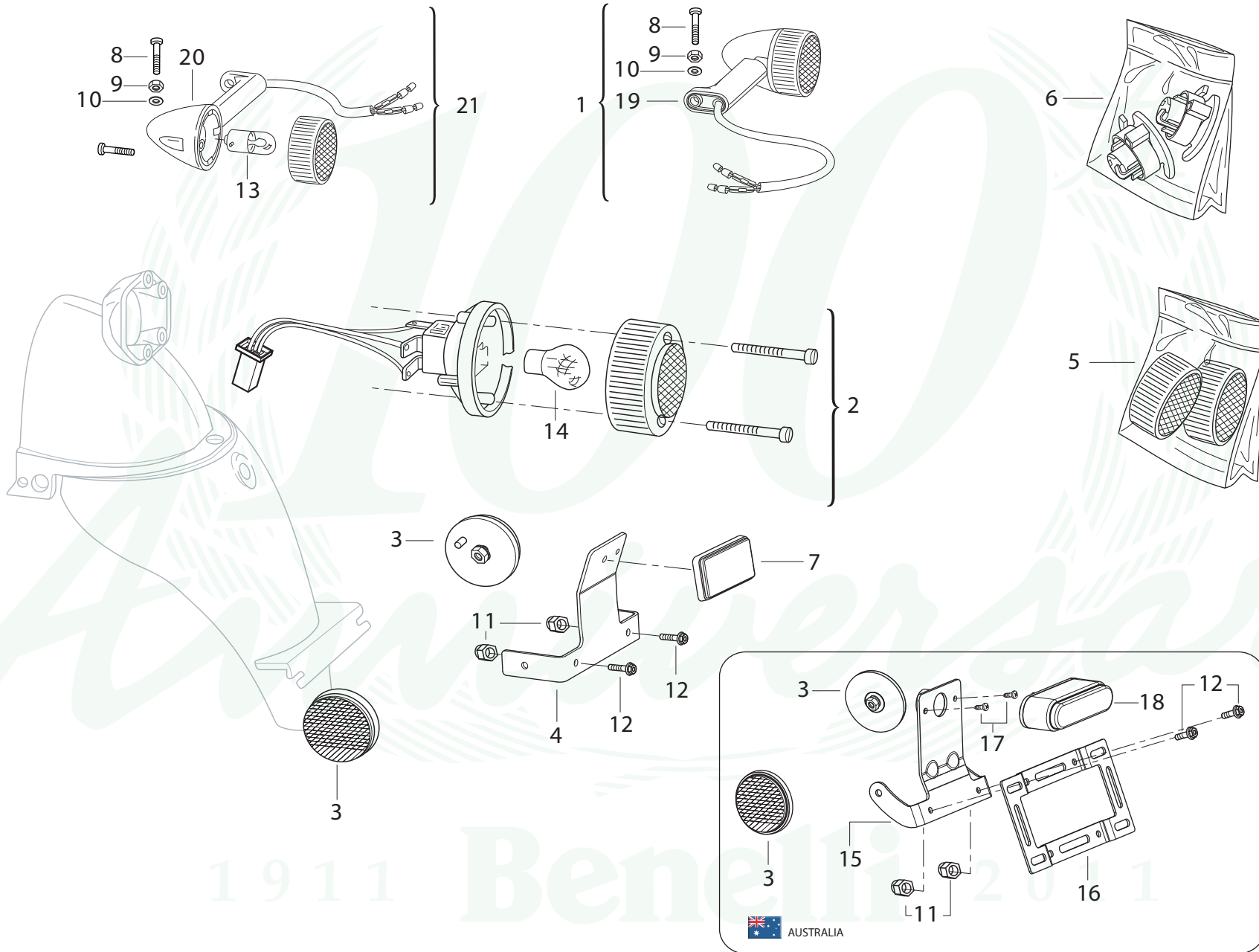
 PHARE ARRIÈRE

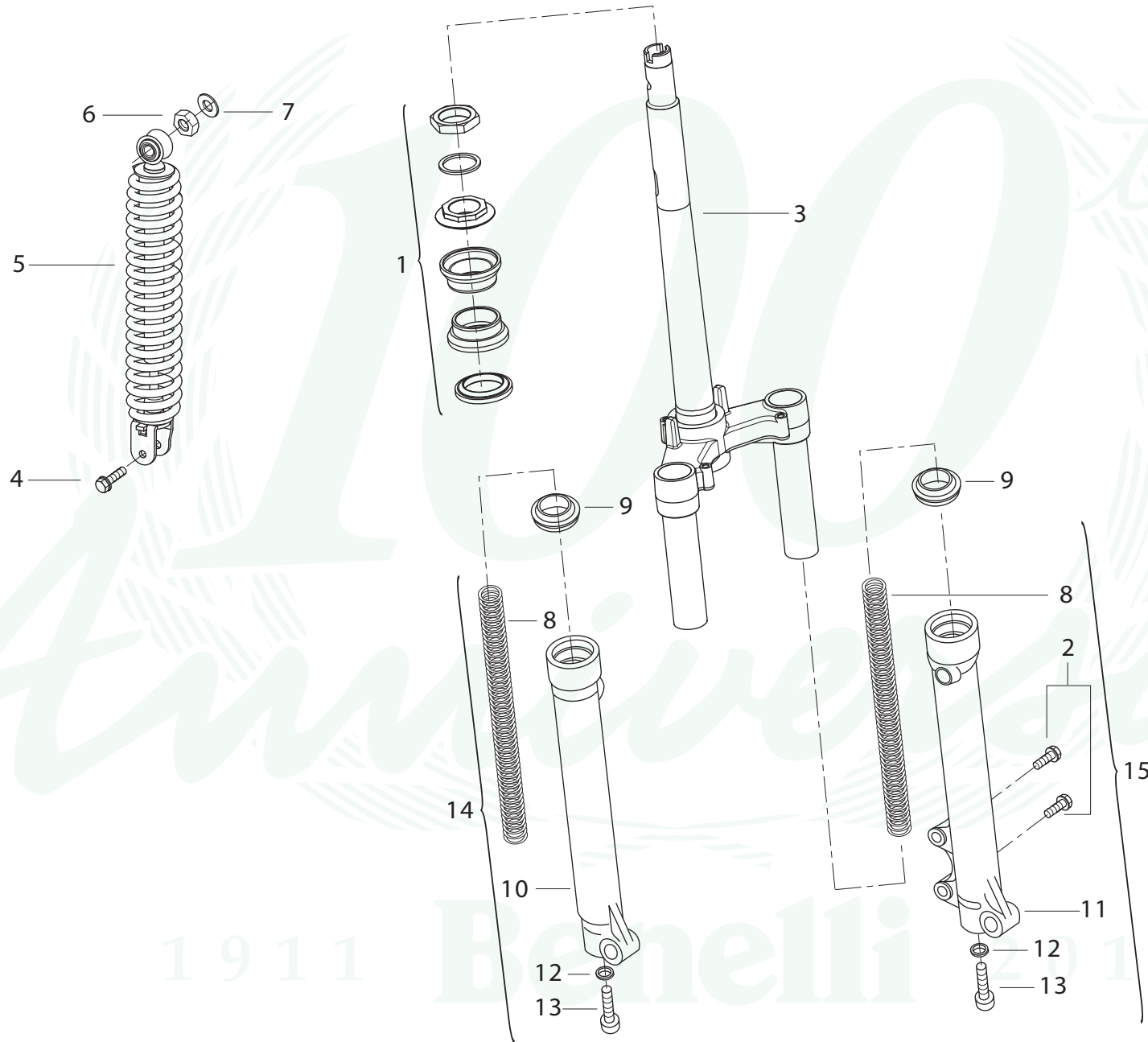
 HINTER-SCHEINWERFER

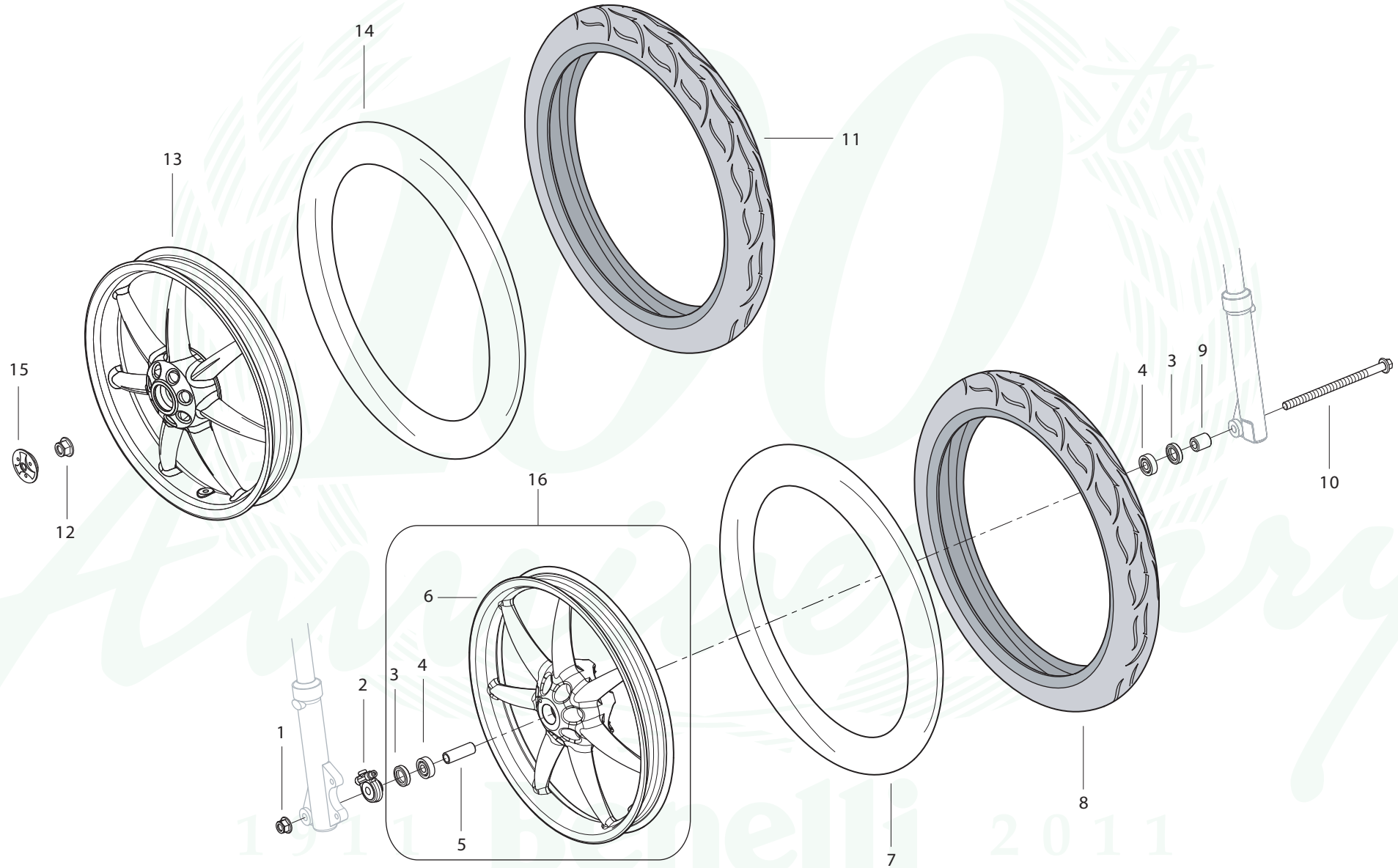
 FARO TRASERO

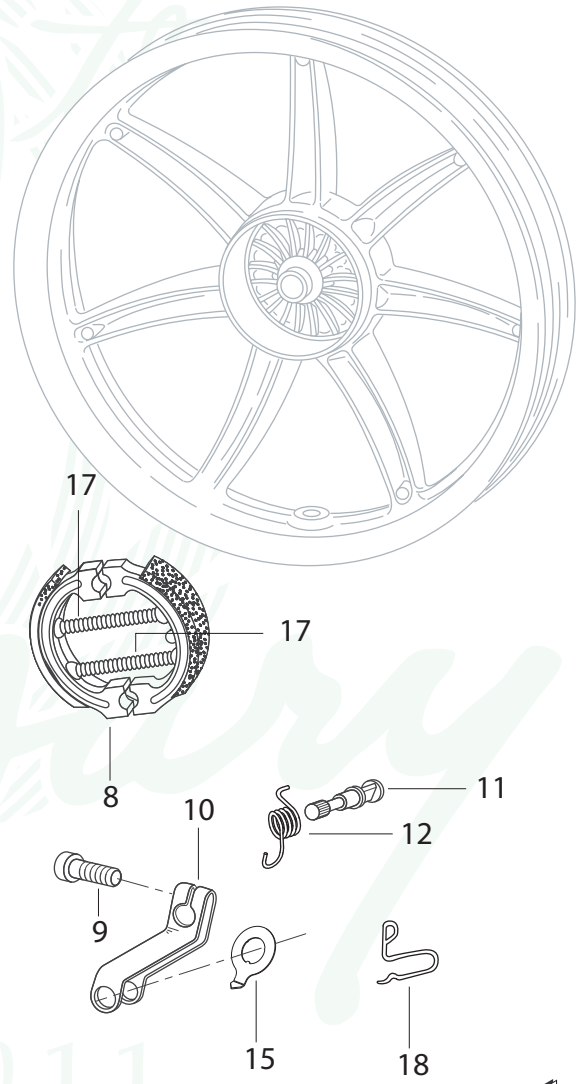
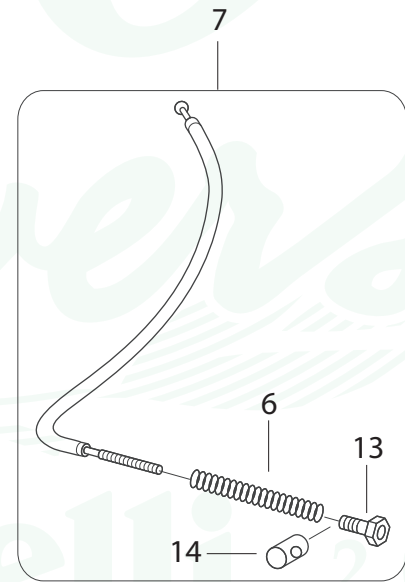
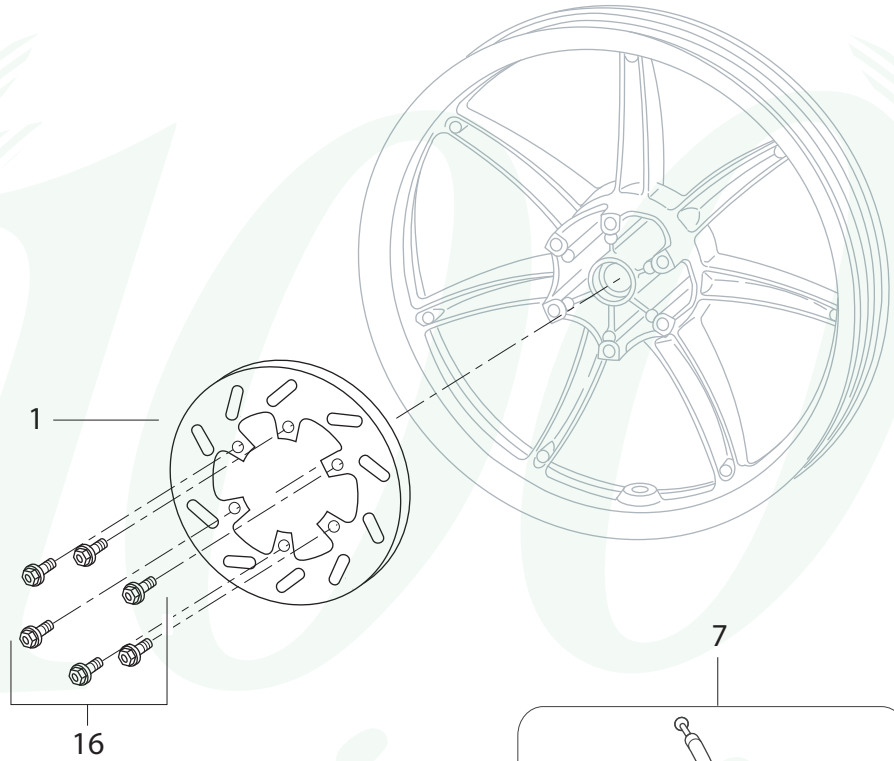
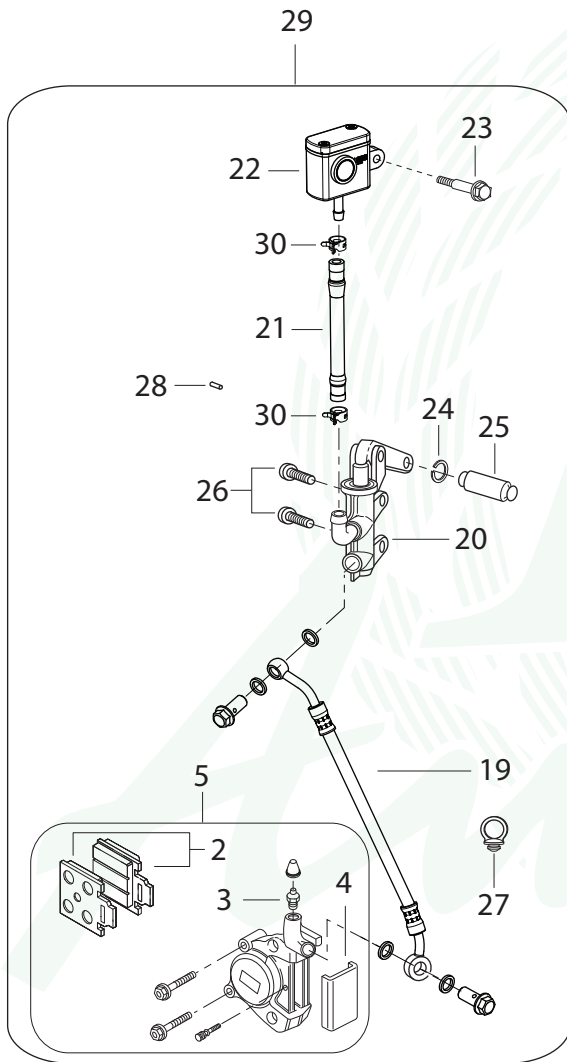
TAVOLA  
DRAWING  
TABLE  
BILD  
TABLA

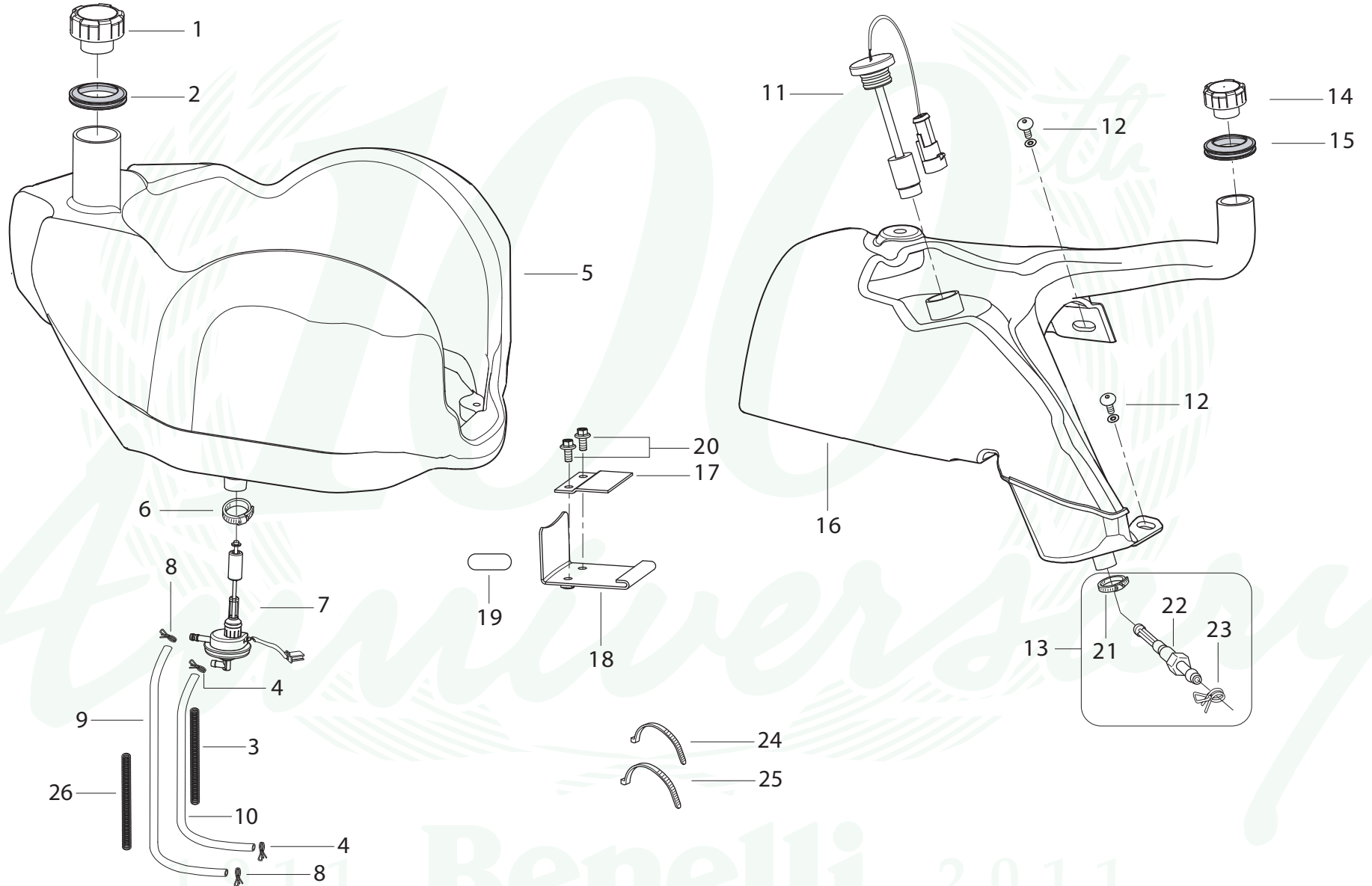
006

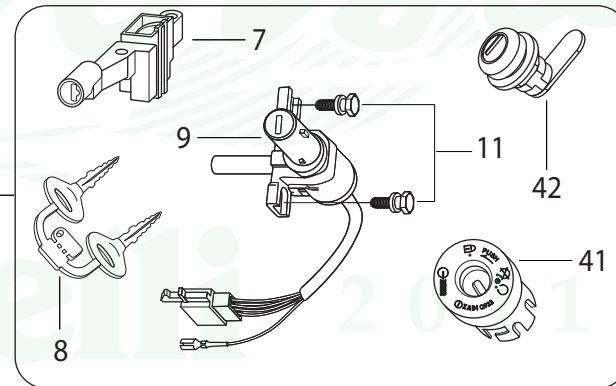
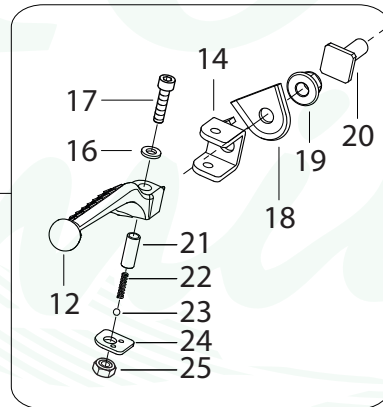
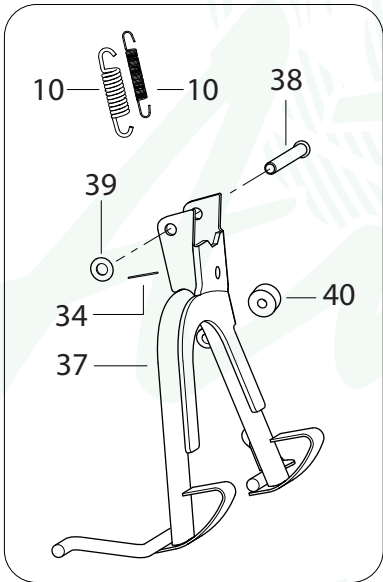
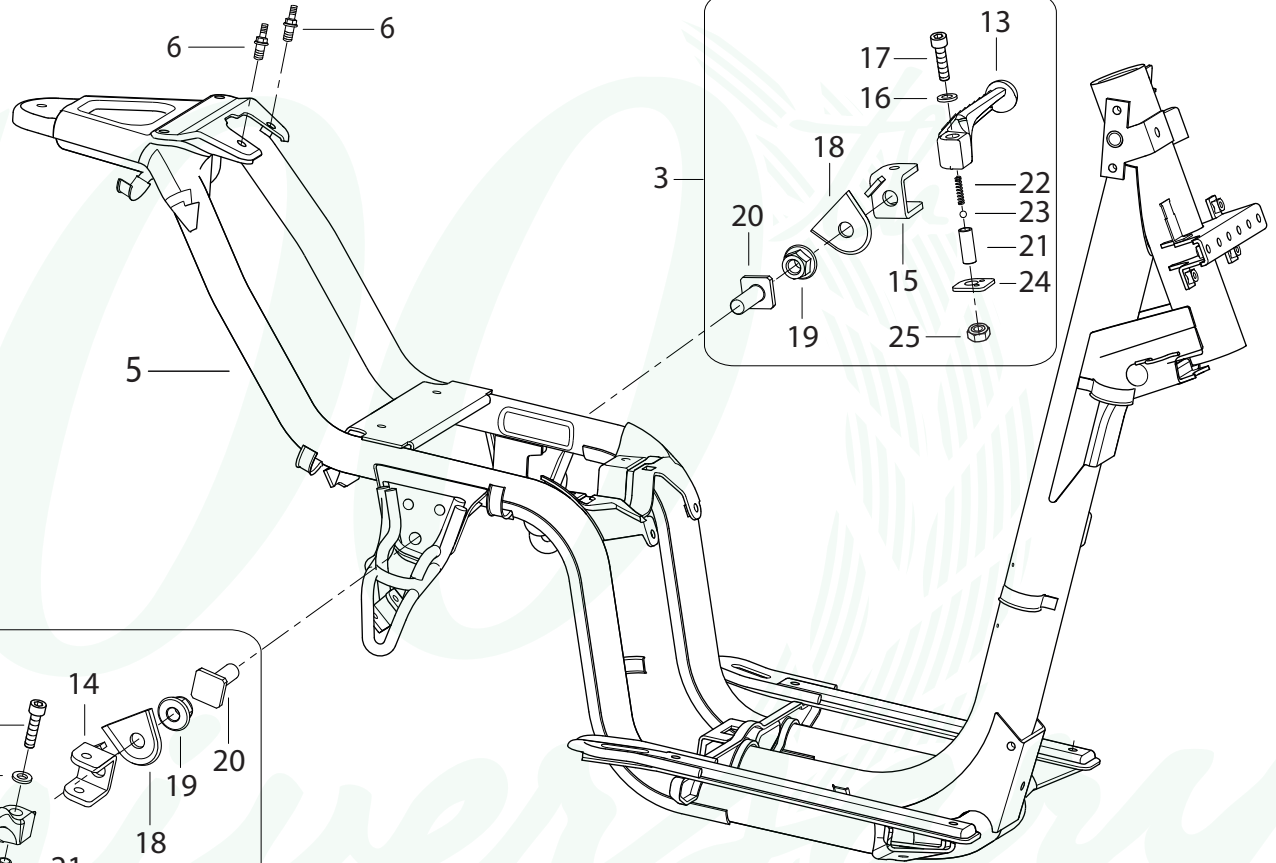
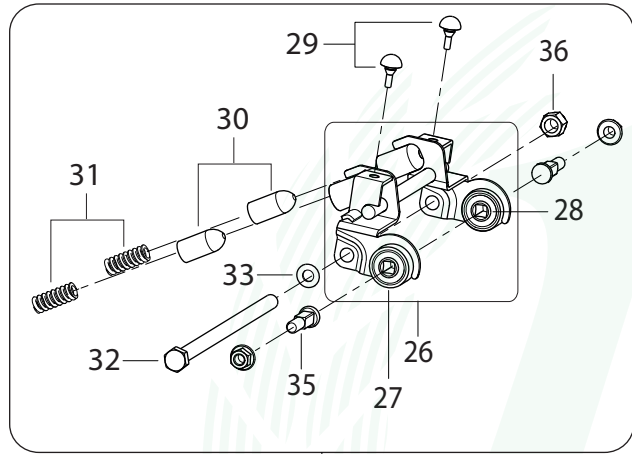


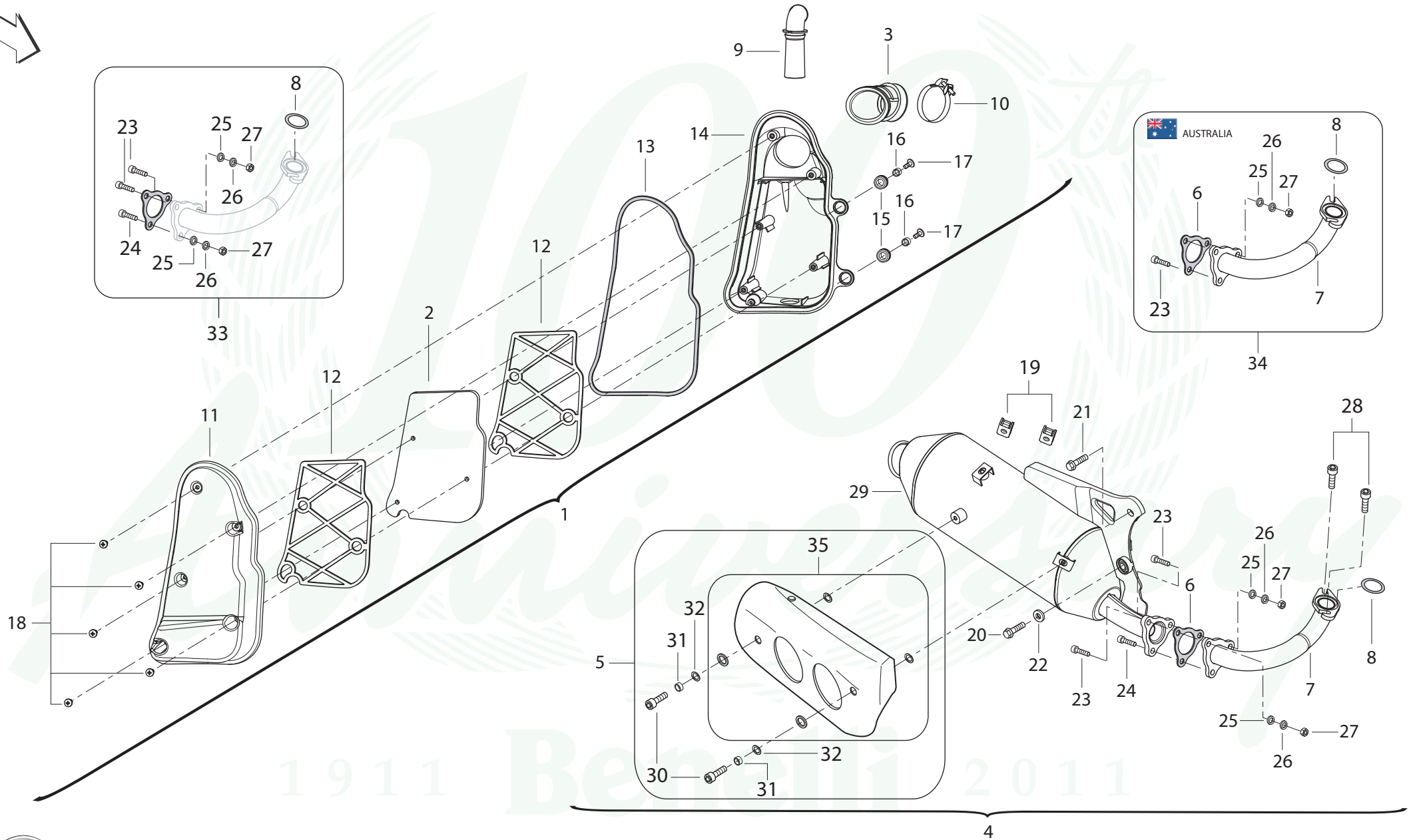


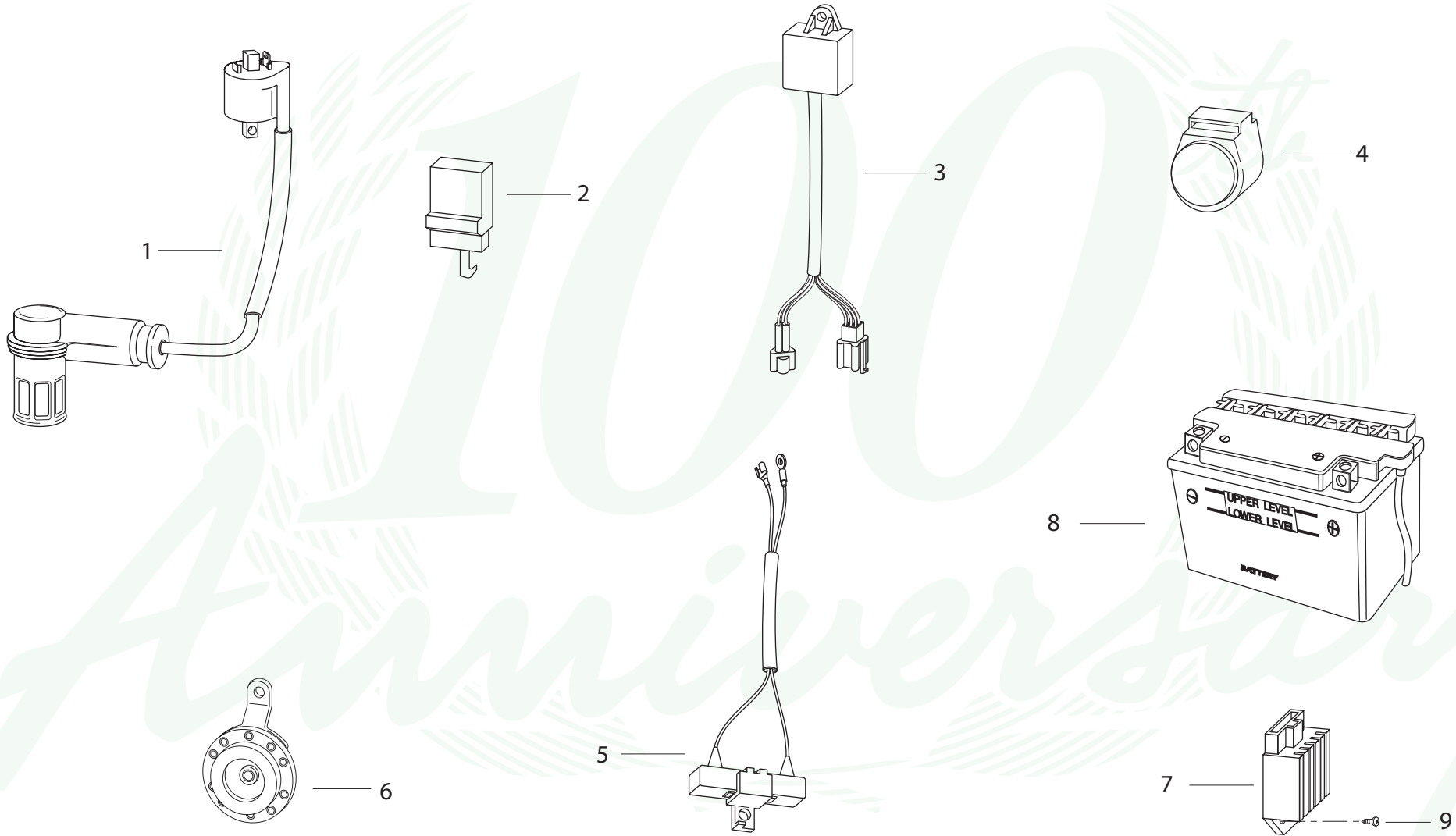








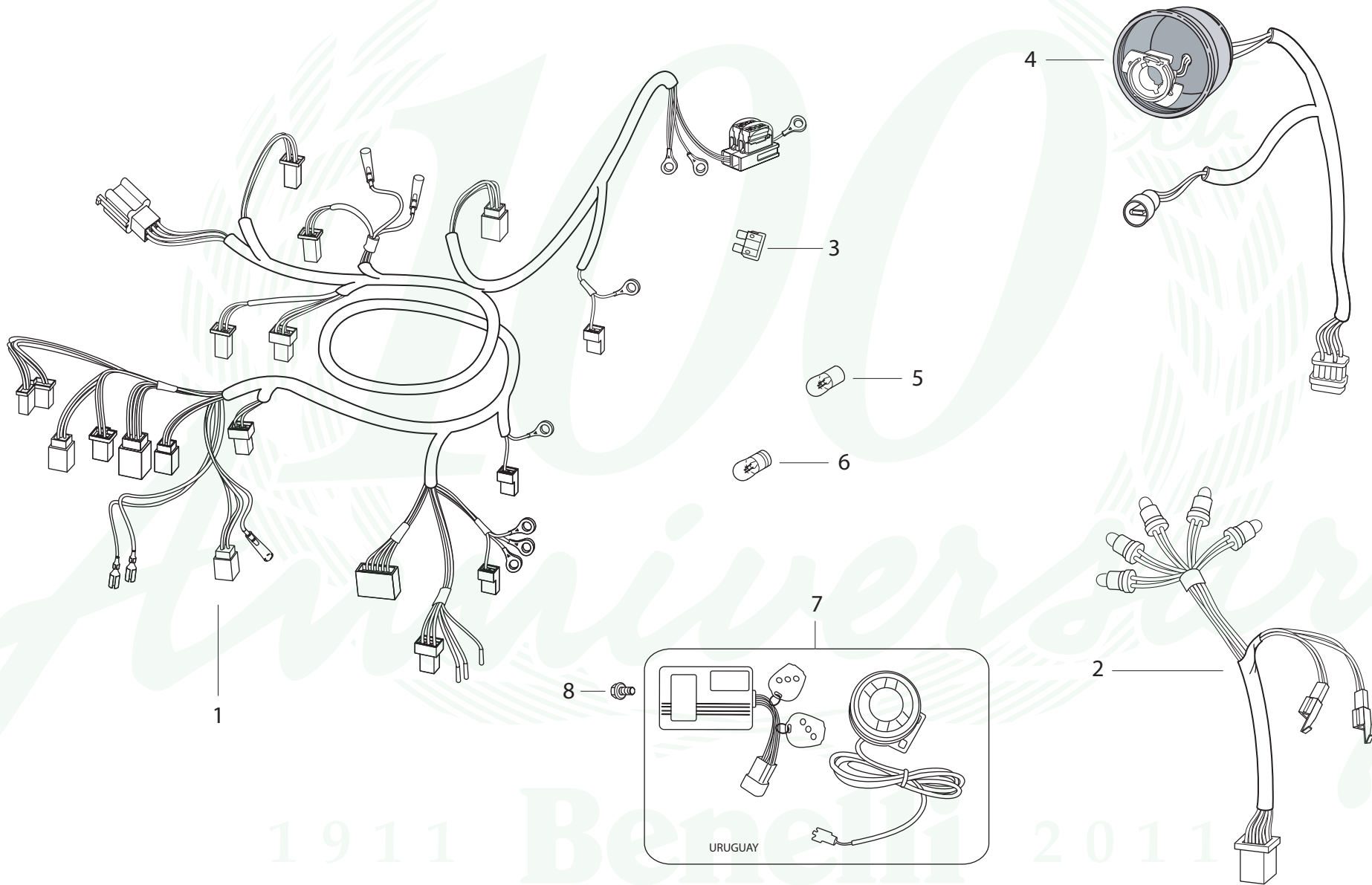


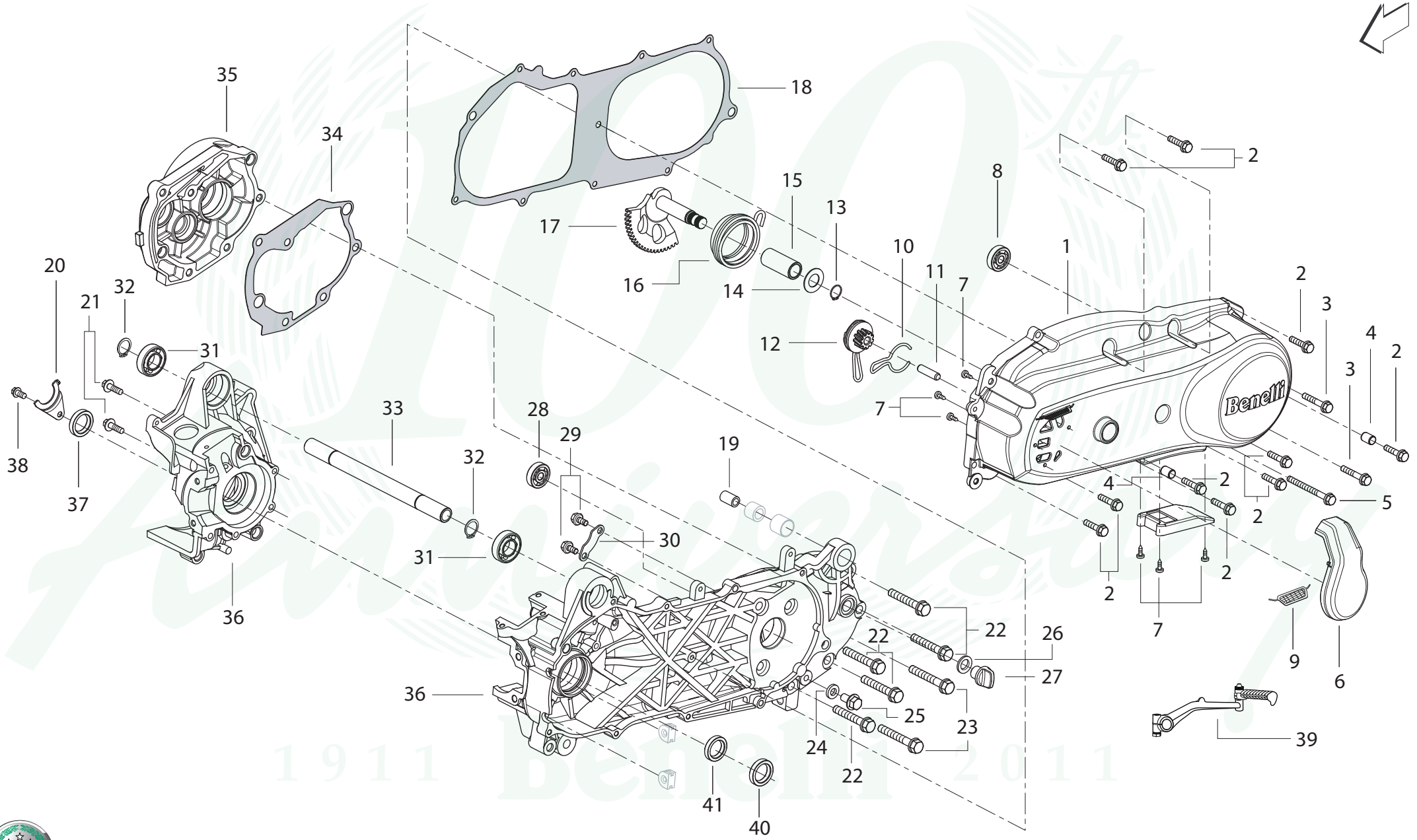


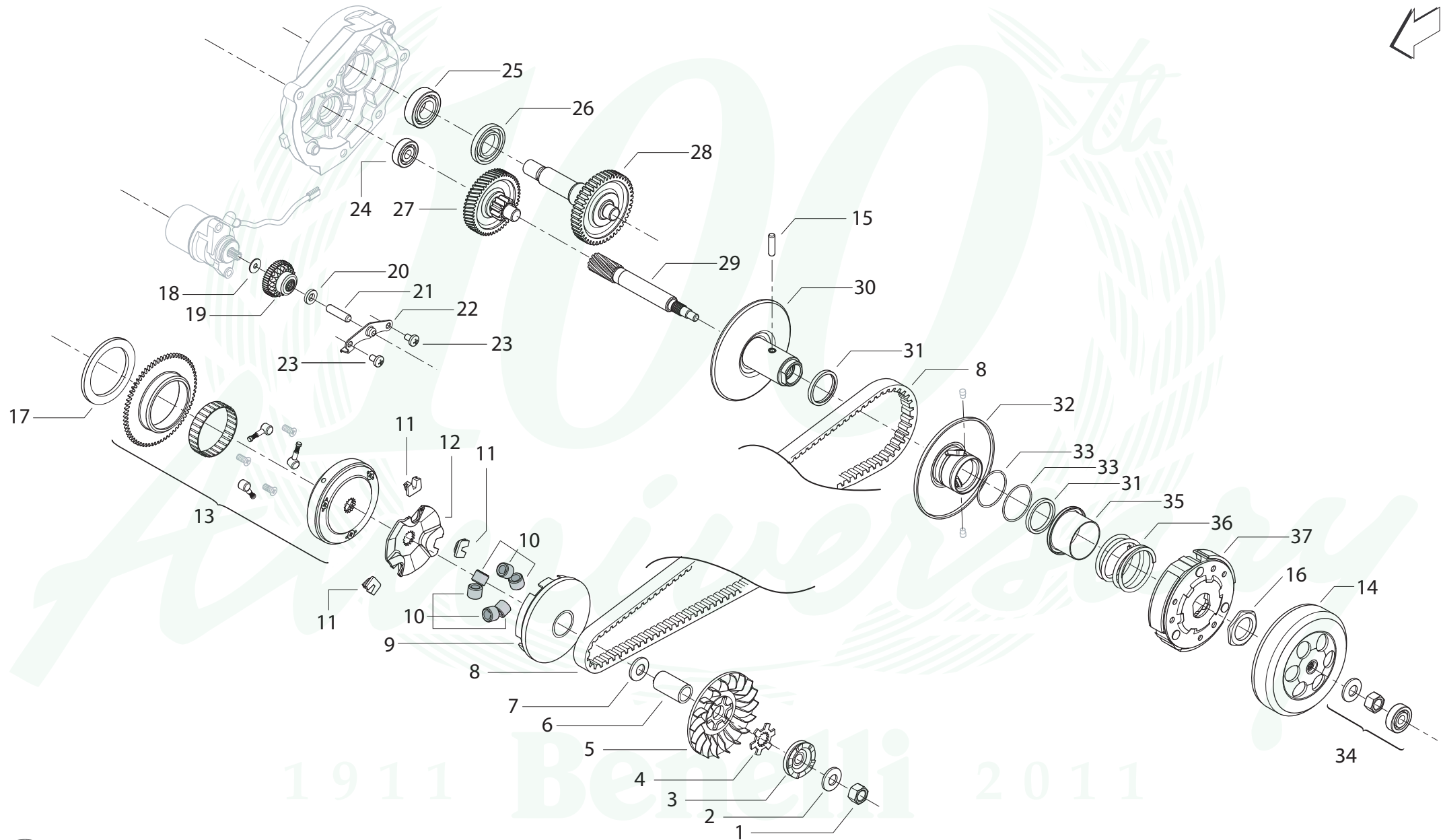
1911 Benelli 2011

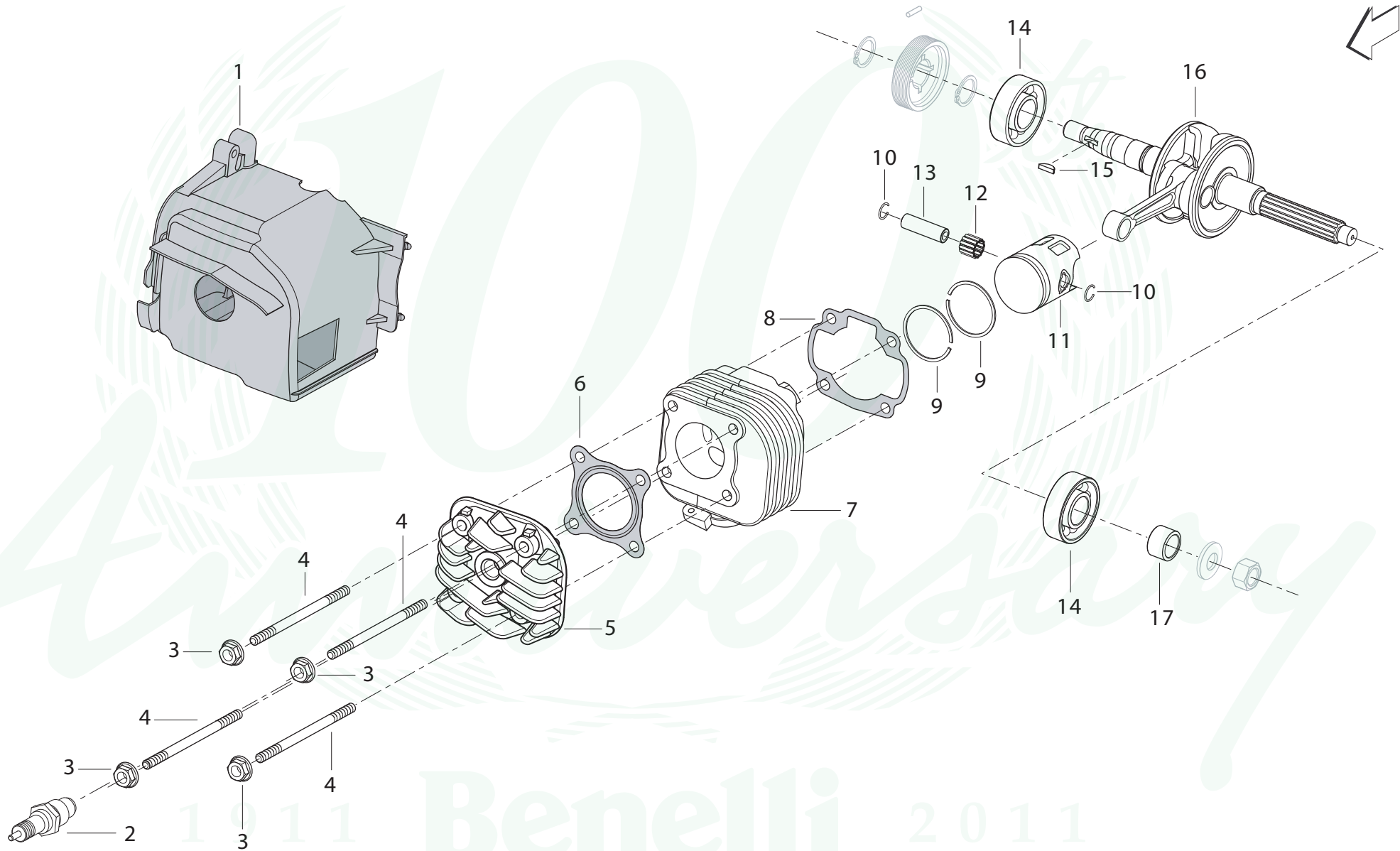


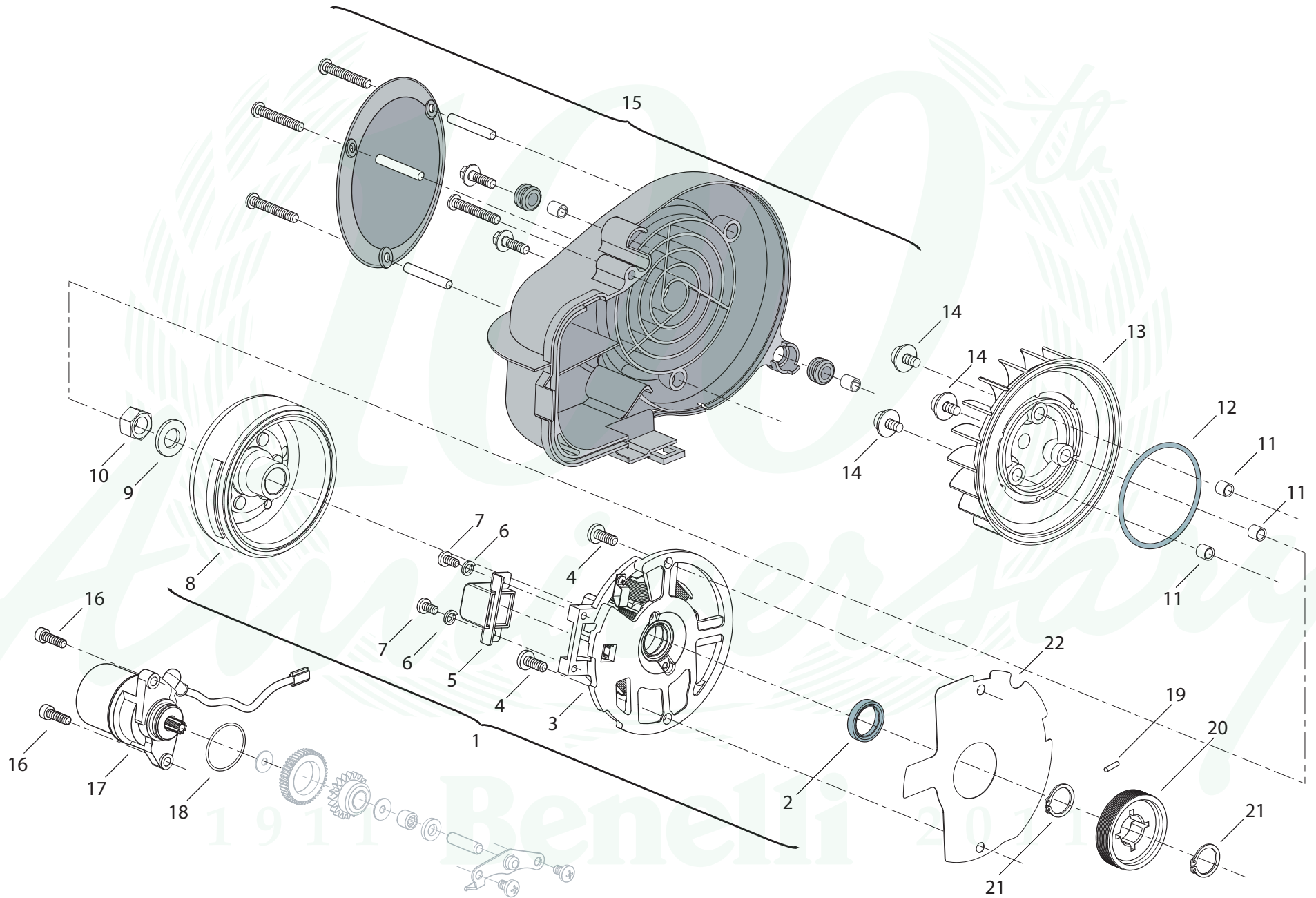


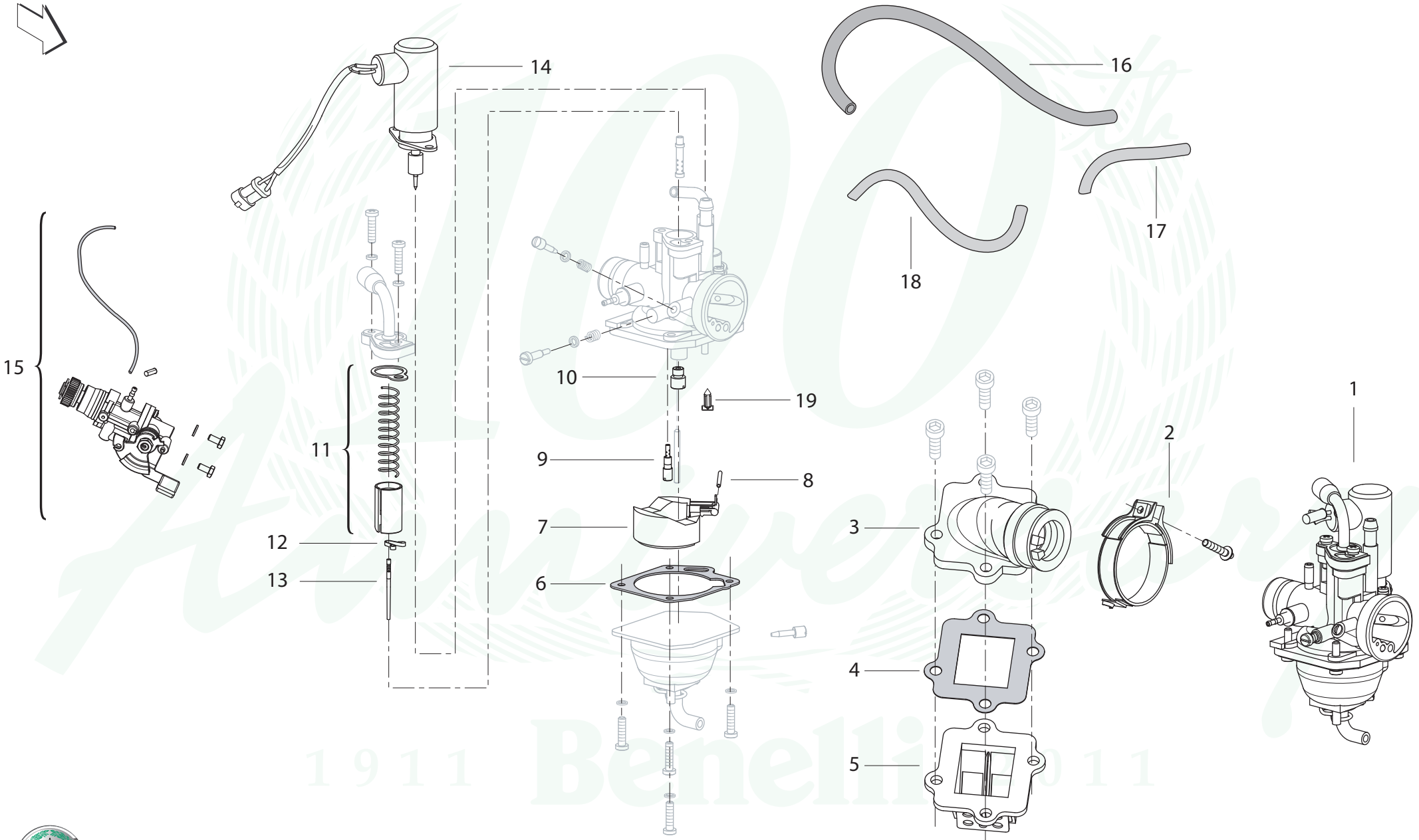


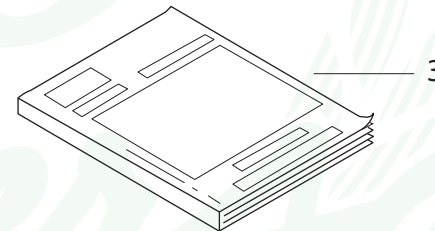












1911 Benelli 2011





IL PRESENTE MANUALE È PROPRIETÀ DELLA  
BENELLI Q.J. S.R.L.  
OGNI PRODUZIONE, TOTALE O PARZIALE,  
È VIETATA.

THIS MANUAL IS PROPERTY OF  
BENELLI Q.J. S.R.L.  
ANY TOTAL OR PARTIAL REPRODUCTION  
IS FORBIDDEN.

CE MANUEL EST DE LA PROPRIÉTÉ DE  
BENELLI Q.J. S.R.L.  
TOURE REPRODUCTION TOTALE OU  
PARTIELLE, EST INTERDITE.

DIE VORLIEGENDE BEDIENUNGSANLEITUNG  
STEHT IM EIGENTUM VON BENELLI Q.J. S.R.L.  
JEDE VÖLLIGE ODER TEILWEISE KOPIE  
IST VERBOTEN.

EL PRESENTE MANUAL ES PROPIEDAD  
DE BENELLI Q.J. S.R.L.  
SE PROHÍBE SU REPRODUCCIÓN  
TOTAL O PARCIAL.



Benelli consiglia accessori originali  
Benelli suggestions original accessories  
Benelli conseiller accessoires original  
Benelli raten Zubehör originell  
Benelli aconsejar accesorios originales



1911

Benelli

2011

Ver.01 - Apr.11  
Benelli Q.J. s.r.l.  
Strada della Fornace Vecchia  
61100 - Pesaro - Italy  
[www.benelli.com](http://www.benelli.com)

