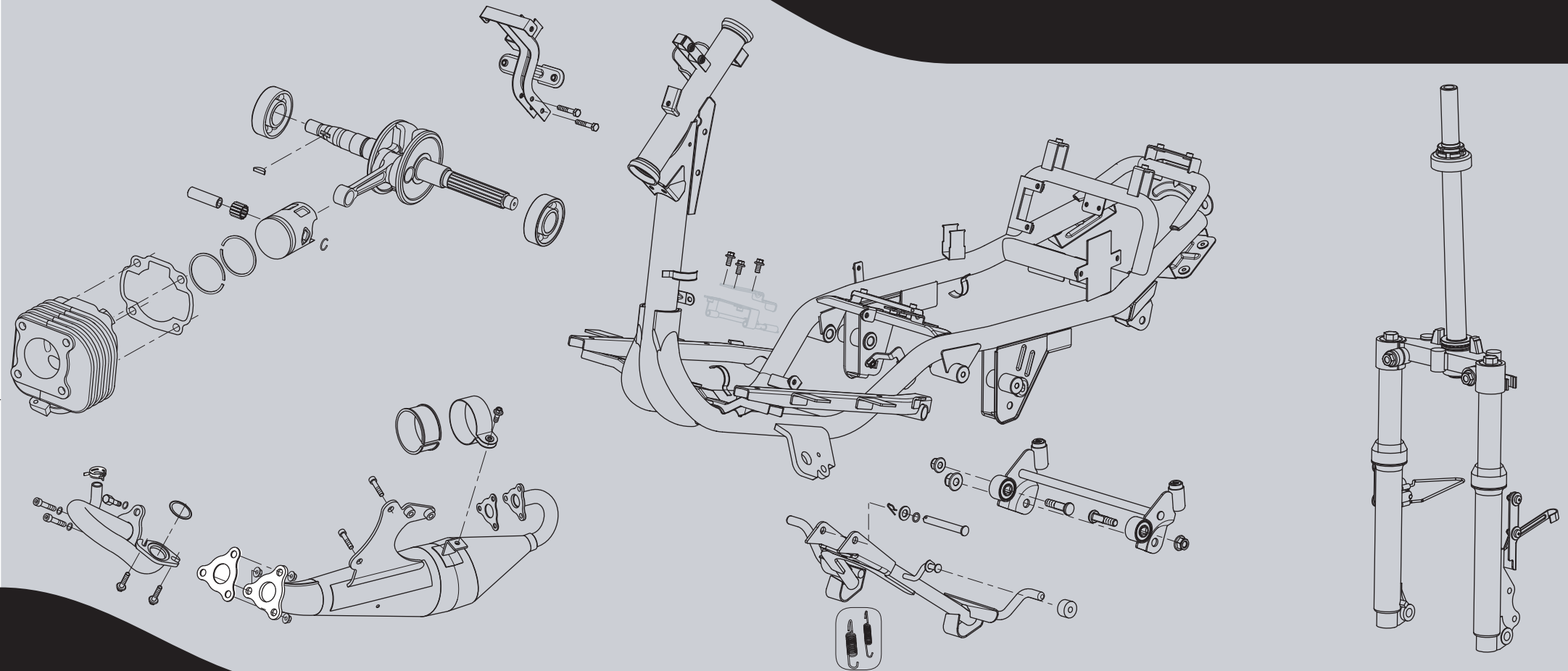




Pure Passion since 1911

**Quattro  
Rove**

MY 2011 ver. 01



**100<sup>th</sup>**  
*Anniversary*  
1911 Benelli 2011

CATALOGO RICAMBI • SPARE PARTS CATALOGUE • CATALOGUE PIÉCES DETACHEES  
ERSATZTEILKATALOG • CATÁLOGO PIEZAS DE REPUESTO

QUESTO CATALOGO SERVE PER RICHIEDERE CON ESATTEZZA LE PARTI DI RICAMBIO.

NELLE ORDINAZIONI INDICARE: IL NUMERO DEI CODICI DEI PARTICOLARI SEGUITO DALLA DESCRIZIONE E LA QUANTITÀ DESIDERATA.

LE INDICAZIONI CON LE FRECCIE SI RIFERISCONO AI LATI DEL VEICOLO RISPETTO AL SENSO DI MARCIA.

I DISEGNI DELLE PARTI DI RICAMBIO SONO SOLO INDICATIVI E NON RAPPRESENTANO IL PEZZO IN OGGETTO.

I DATI CONTENUTI IN QUESTO CATALOGO SONO INDICATIVI E POSSONO ESSERE SOGGETTI A MODIFICHE SENZA IMPEGNO DI PREAVVISO.

THE PRESENT SPARE PARTS ORDER EXACTLY THE RIGHT SPARE PARTS.

WHEN ORDERING SPECIFY: THE PART'S CODE NUMBER FOLLOWED BY ITS DESCRIPTION AND QUANTITY NEEDED.

REFERENCE WITH ARROWS APPLY TO THE VEHICLE IN TERMS OF ITS DIRECTION OF MOVEMENT.

SPARE PARTS DRAWINGS ARE GENERAL AND DO NOT REPRESENT THE PART.

THE CONTENTS OF THIS CATALOGUE ARE GENERAL AND CAN UNDERGO CHANGES WITHOUT PRIOR NOTICE.

CE CATALOGUE PERMET DE COMMANDER CORRECTEMENT LES PIÈCES DÉTACHÉES.

LES COMMANDES DOIVENT ÊTRE PASSÉES EN INDIQUANT: LE NUMERO DE CODE DES PIÈCES DÉTACHÉES SUIVI DE LEUR DESCRIPTION ET QUANTITÉ DÉSIRÉE.

RÉFÉRENCE AVEC DES FLÈCHES SONT LES CÔTÉS DU VÉHICULE PAR RAPPORT AU SENS DE LA MARCHÉ.

LES PLANS DES PIÈCES DÉTACHÉES SONT FOURNIS SEULEMENT À TITRE INDICATIF ET NE REPRÉSENTENT PAS LA PIÈCE CONCERNÉE.

LES DONNÉES DE CE CATALOGUE SONT CITÉES SEULEMENT À TITRE INDICATIF ET PEUVENT ÊTRE L'OBJET DE MODIFICATIONS SANS AVIS PRÉALABLE.

DIESER ERSATZTEILKATALOG DIENT ZUR GENAUEN ANGABE DER TEILE BEI ERSATZTEILBESTELLUNGEN.

BEIERSATZBESTELLUNG IST FOLGENDES ANZUGEBEN: DIE BESTELLNUMMER DER ERSATZTEILE MIT DER ENTSPRECHENDEN BESCHREIBUNG UND GENAUE MENGE.

DIE ANGABEN MIT PFEILE BEZIEHEN SICH AUF DAS FAHRZEUG IN FAHRRICHTUNG.

DIE ZEICHNUNGEN DER ERSATZTEILE SIND NUR ALS HINWEISE GEDACHT UND STELLEN NICHT DAS BETROFFENE TEIL DAR.

BEI DEN IM KATALOG ANGEFÜHRTEN DATEN HANDELT ES SICH UM ANHALTSDATEN, DIE JEDERZEIT, OHNE VORANKÜNDIGUNG, GEÄNDERT WERDEN KÖNNEN.

EL PRESENTE CATÁLOGO SIRVE PARA PEDIR CON EXACTITUD LAS PARTES DE REPUESTO.

EN LOS PEDIDOS SE DEBE INDICAR: EL NÚMERO DE CÓDIGO DE LA PARTE Y A CONTINUACIÓN LA DESCRIPCIÓN Y CANTIDAD DESEADA.

LAS INDICACIONES CON LAS FLECHAS SE REFIEREN A LOS LADOS DEL VEHÍCULO RESPECTO DEL SENTIDO DE MARCHA.

LOS DISEÑOS DE LAS PARTES DE RECAMBIO SON SOLO INDICATIVOS Y NO REPRESENTAN LA PIEZA EN CUESTIÓN.

LOS DATOS CONTENIDOS EN EL PRESENTE CATÁLOGO SON INDICATIVOS Y PUEDEN MODIFICARSE SIN AVISO PREVIO.

1911

Benelli

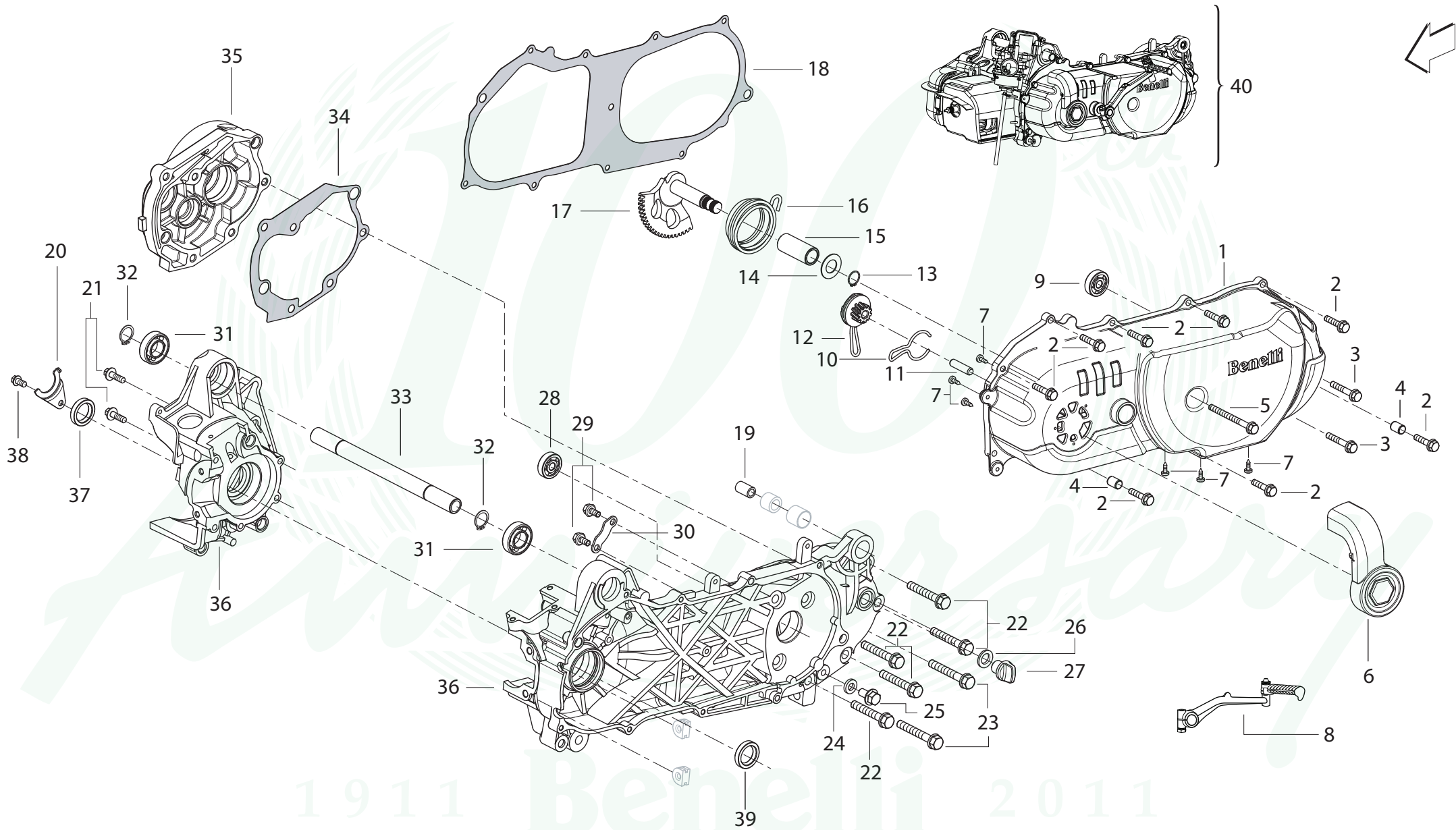
2011

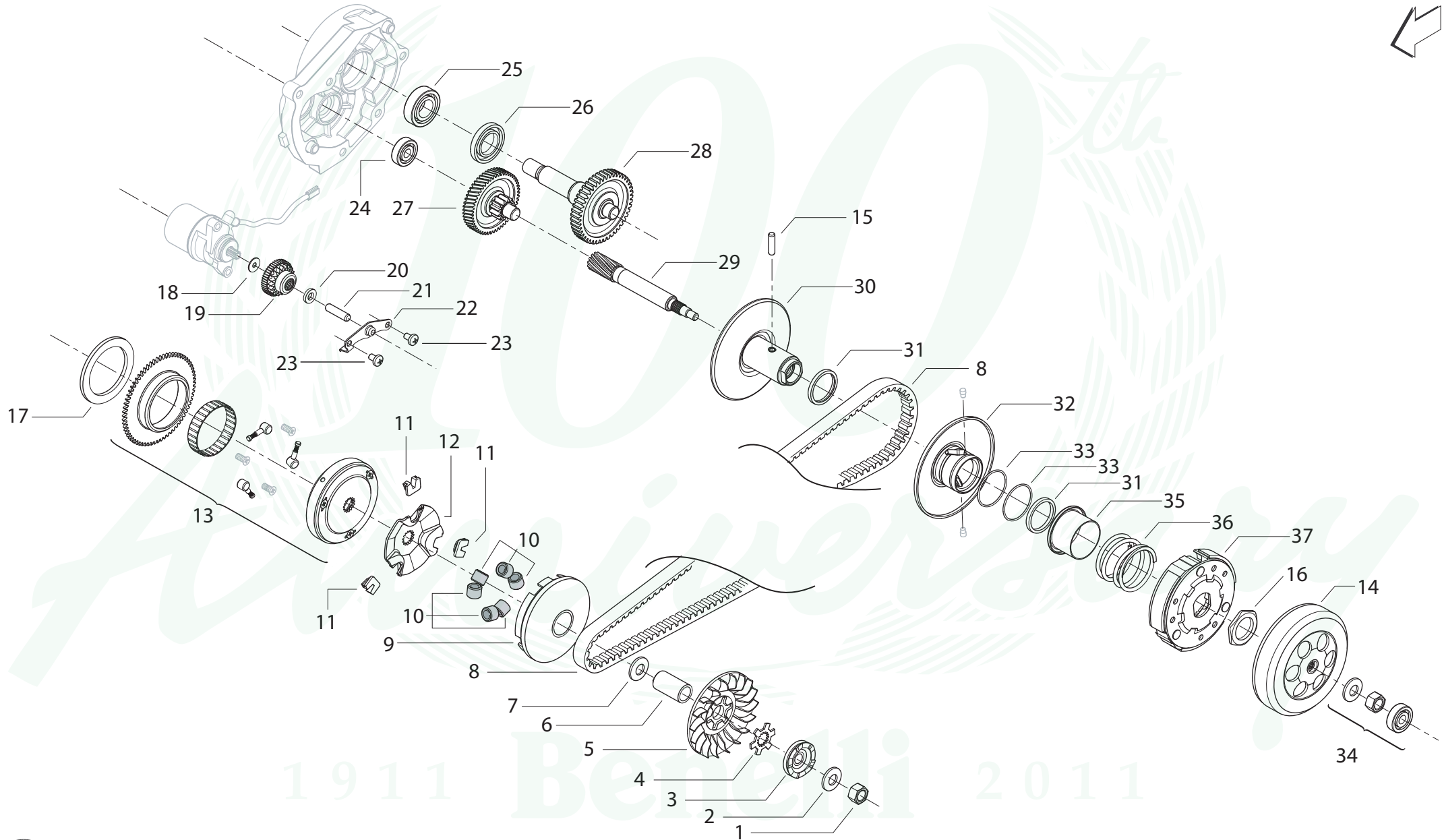
001	CARTER MOTORE	CRANKCASE	CARTER MOTEUR	MOTERGEHÄUSE	CARTER MOTOR
002	TRASMISSIONE	TRANSMISSION	TRANSMISSION	BOWDENZÜGE	TRASMISIONES
003	GRUPPO TERMICO IMBIELLAGGIO	THERMIC ASSEMBLY CRANKSHAFT	GRUPE THERMIQUE	VILEBREQUIN WARMESATZ ANGRIF DER PLEUELSTANGEN	GRUPO TÉRMICO ARTICULACIÓN BIELAS
004	VENTOLA ARIA ACCENSIONE	AIR FAN IGNITION	VENTILATEUR À AIR DEMARREUR	LUFTRAD ZÜNDUNG	VENTILADOR AIRE ARRANQUE
005	CARBURATORE POMPA OLIO	CARBURATEUR OIL PUMP	CARBURATEUR POMPE A HUILE	VERGASER ÖLPUMPE	CARBURADOR BOMBA ACEITE
006	CARENATURE ANTERIORI	FRONT FAIRINGS	CARÉNAGES AVANT	SCHALE VORDER	BASTIDORS DELANTERA
007	CARENATURE CENTRALI	CENTRAL FAIRINGS	CARÉNAGES CENTRAL	SCHALE ZENTAL	BASTIDORS CENTAL
008	PEDANE	FOOT PEG	REPOSE PIED	FUSSRASTE	ESRIBERAS
009	CODONE	TAIL GUARD	CORPS DE SELLE	HECK	CUERPO ASIEN TO
010	MANUBRIO	HANDLEBAR	GUIDON	LENKER	MANILLAR
011	TELAIO	FRAME	CHASSIS	RAHMEN	CHASIS
012	SOSPENSIONI	SUSPENSIONS	SUSPENSIONS	FEDERUNG	SUSPENSION
013	SERBATOIO BENZINA	FUELTANK	RESERVOIR ESSENCE	BENZINTANK	DEPOSITO GASOLINA
014	SERBATOIO OLIO	OIL TANK	RESERVOIR HUILE	OILTANK	TANQUE ACEITE
015	RUOTE	WHEELS	ROUES	RAD	RUEDAS
016	VANO PORTACASCO	HELMET HOLLOW	CAGE PORTE- CASQUE	HELMERAUM	COMPATIMIENTO PORTACASCO
017	SCARICO	EXHAUST	ECHAPPEMENT	AUSPUFF	ESCAPE
018	SCATOLA FILTRO	FILTER BOX	BOITE FILTRE	FILTERSCHACHTEL	CAJA FILTRO
019	IMPIANTO ELETTRICO	ELETRIC SYSTEM	INSTALLATION ELECTRIQUE	ELEKTRISCHE ANALAGE	INSTALACIÓN ELÈTRICA
020	ADESIVI DESTRI	RIGHT STICKERS	DÉCALCOMANIE DROITE	AUFKLEBERS RECHTS	ADHESIVI DERECHO
021	ADESIVI SINISTRI	LEFT STICKERS	DÉCALCOMANIE GAUCHE	AUFKLEBERS LINK	ADHESIVI IZQUIERDI
022	ACCESSORI	ACCESSORIES	ACCESSOIRES	ZUBEHÖR	ACCESORIOS

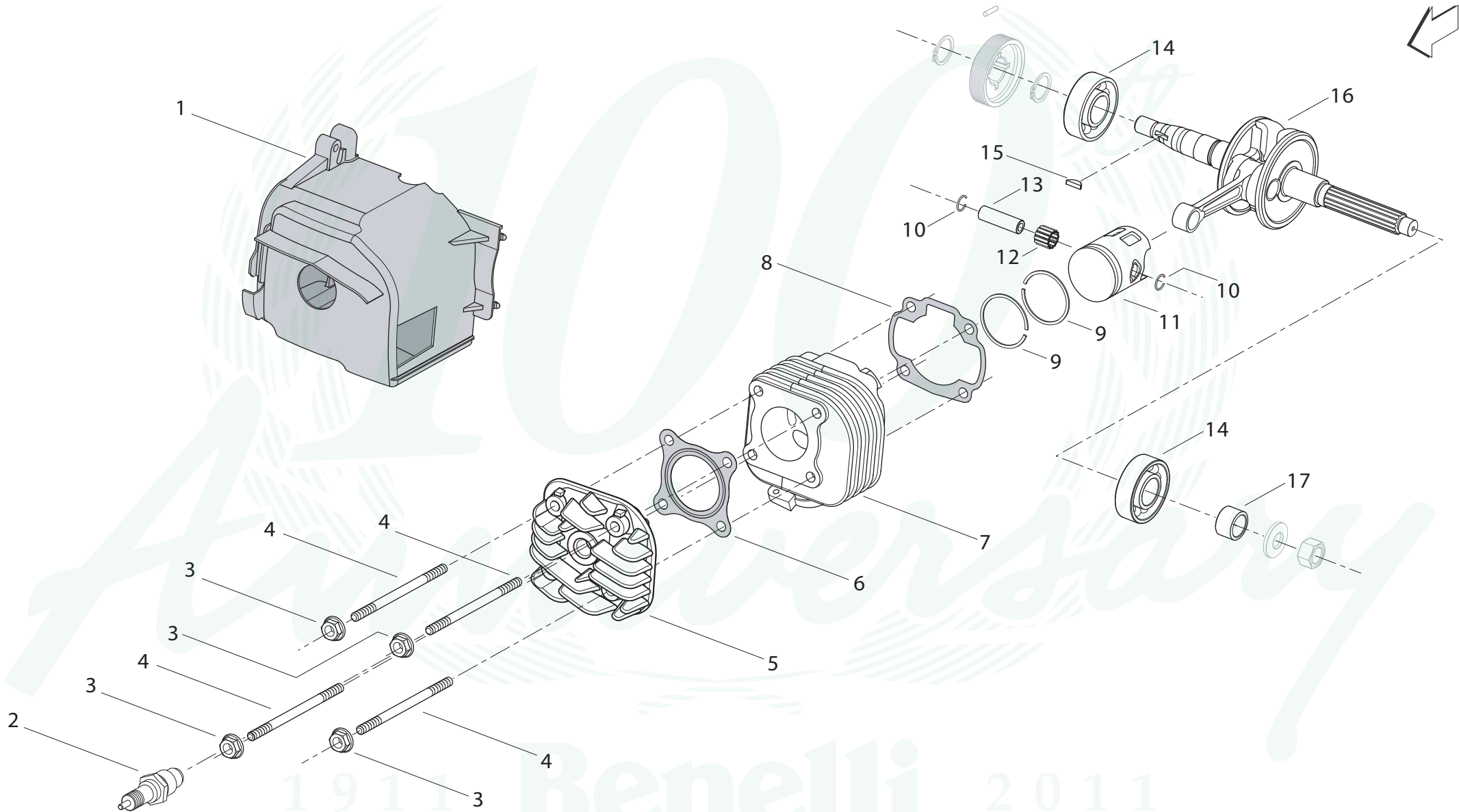
1911

Benelli

2011







# VENTOLA ARIA ACCENSIONE

VENTOLA ARIA ACCENSIONE

AIR FAN IGNITION

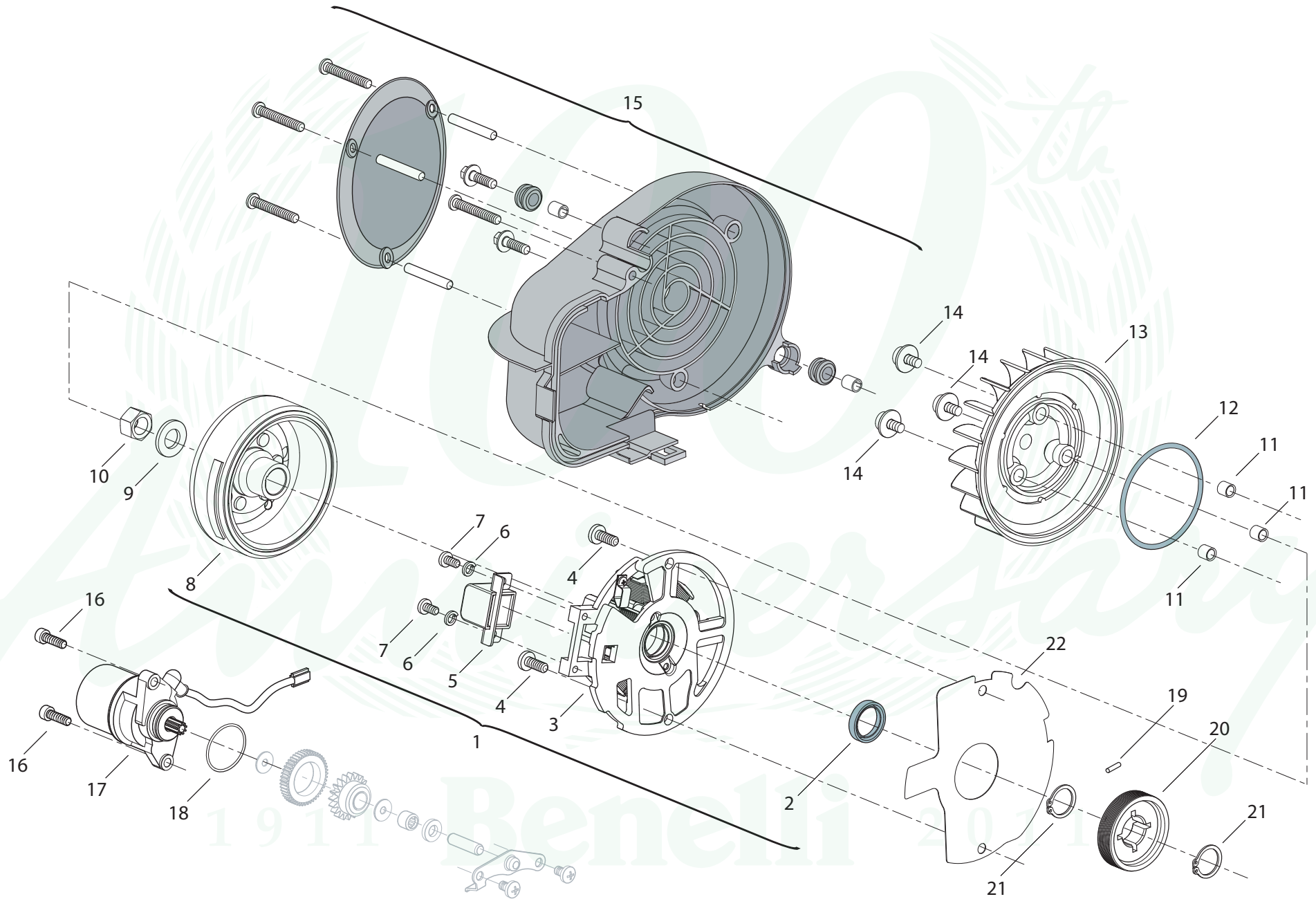
VENTILATEUR A AIR DEMARREUR

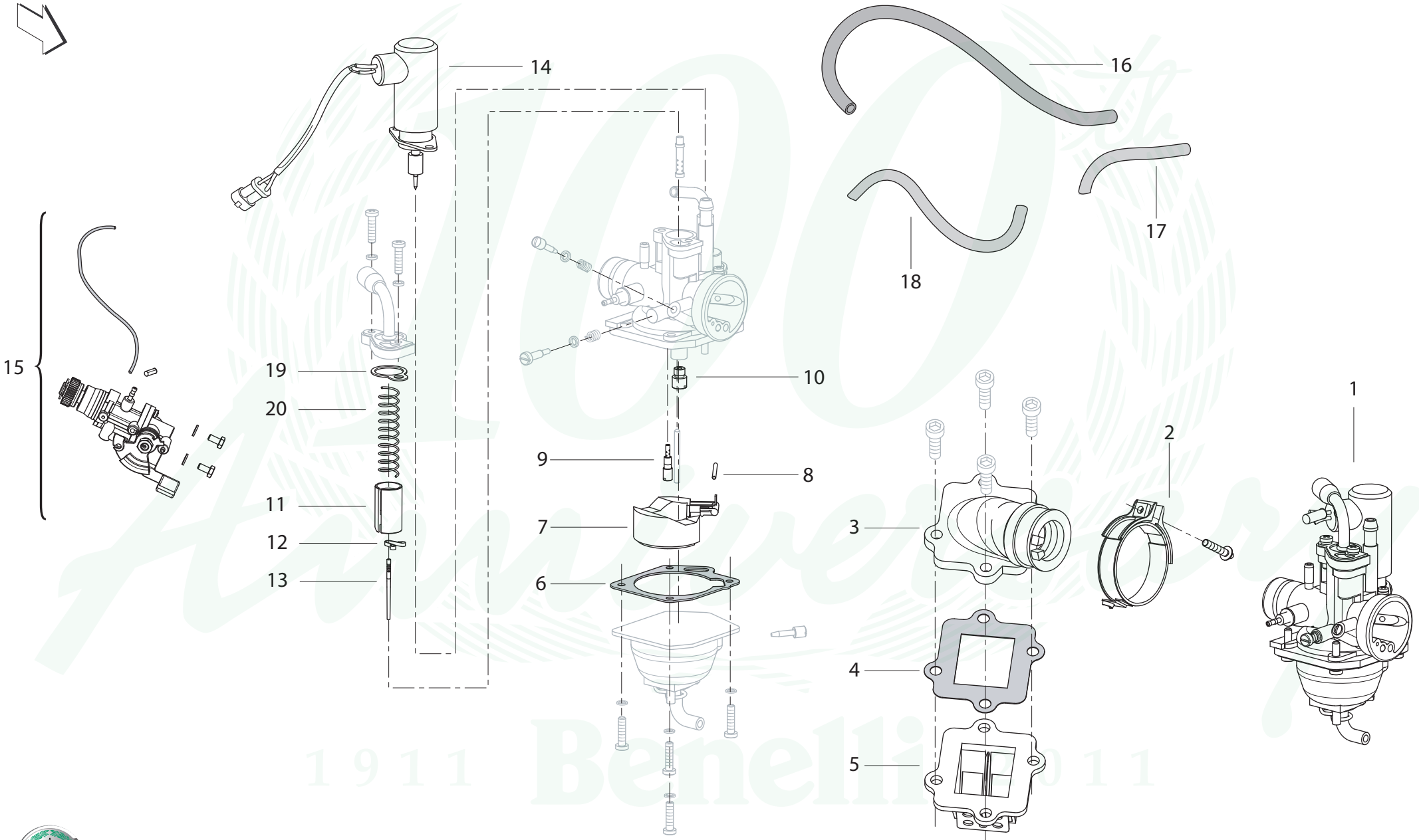
LUFTRAD ZÜNDUNG

VENTILADOR AIRE ARRANQUE

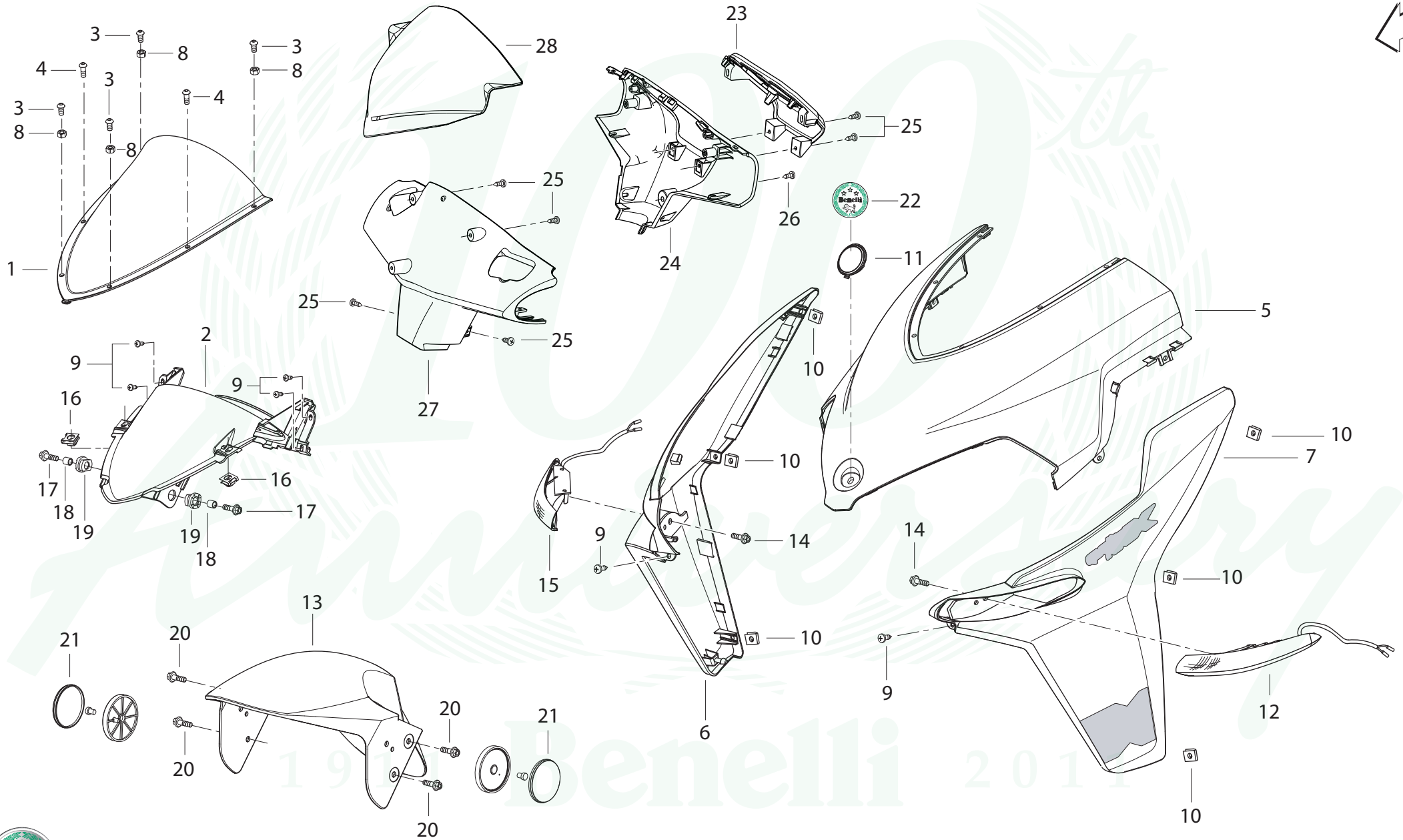
TAVOLA  
DRAWING  
TABLE  
BILD  
TABLA

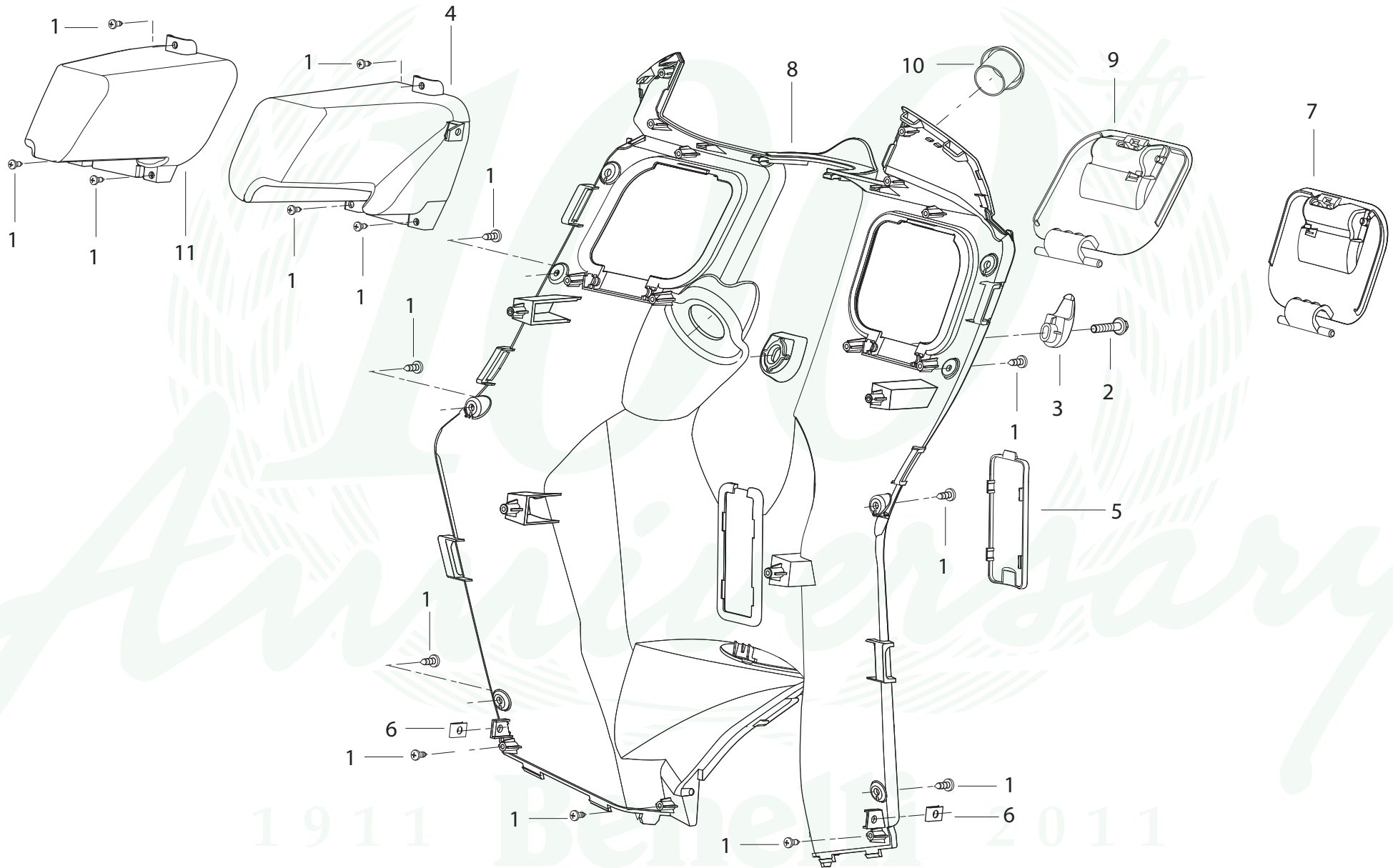
004

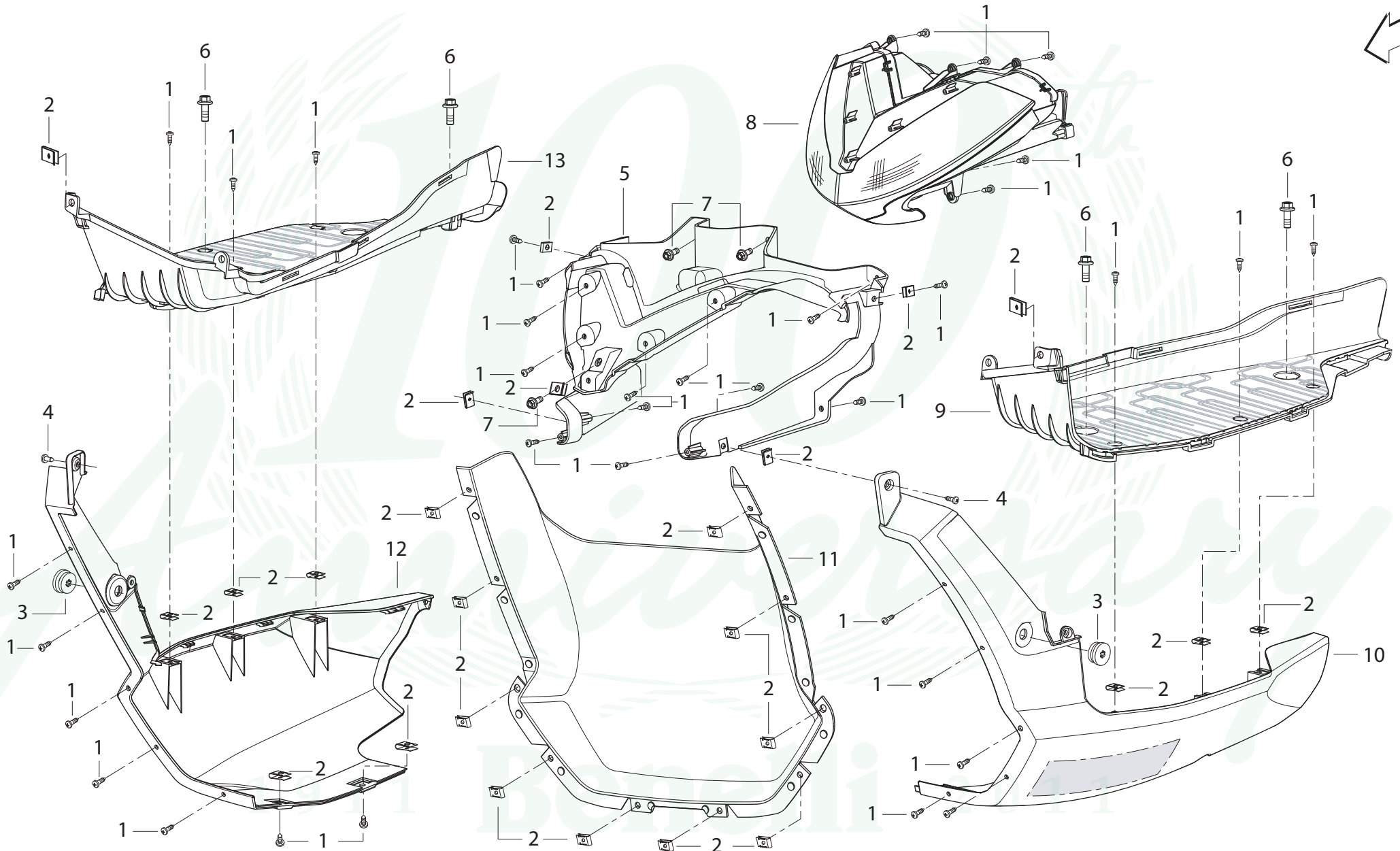


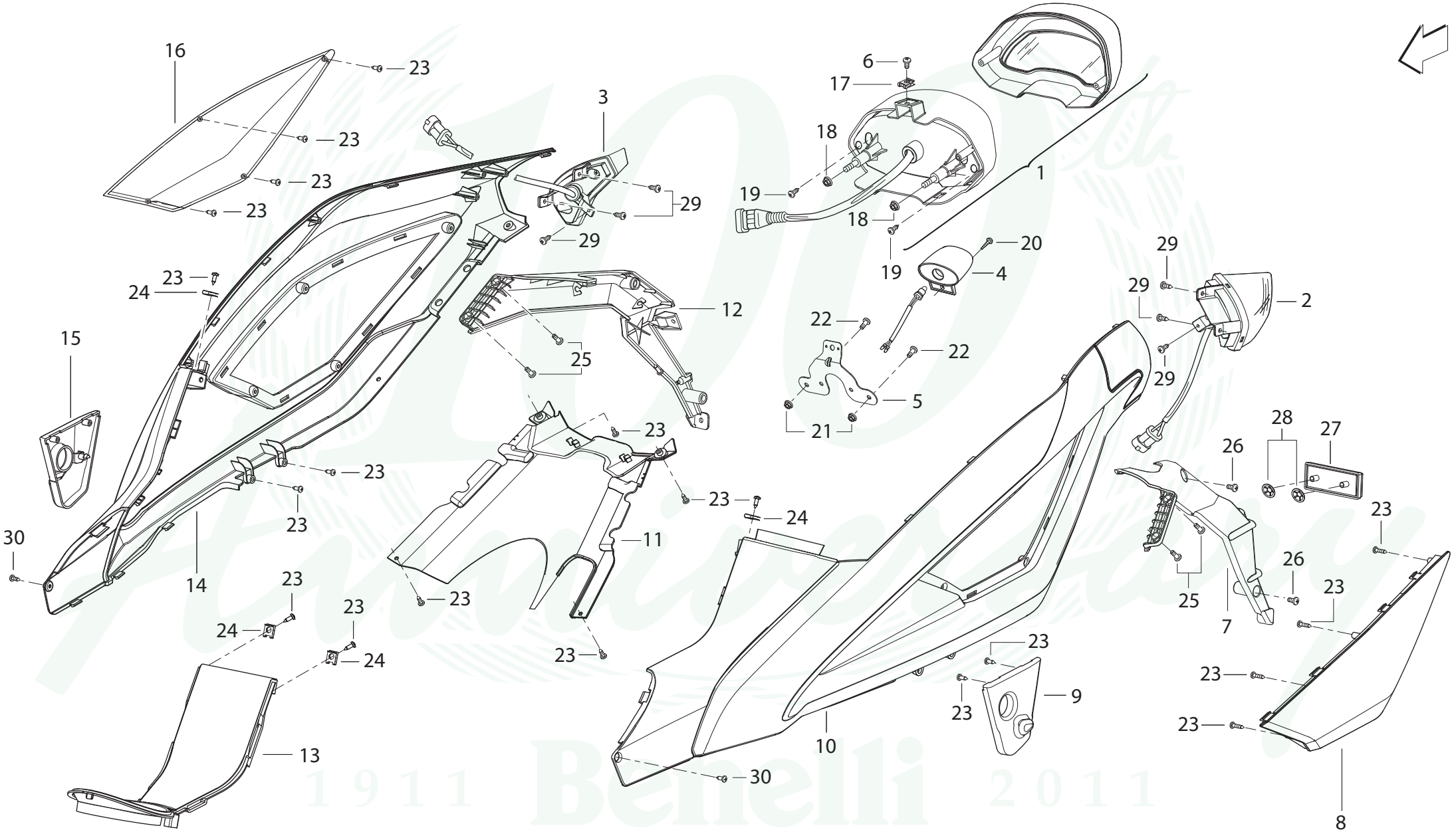


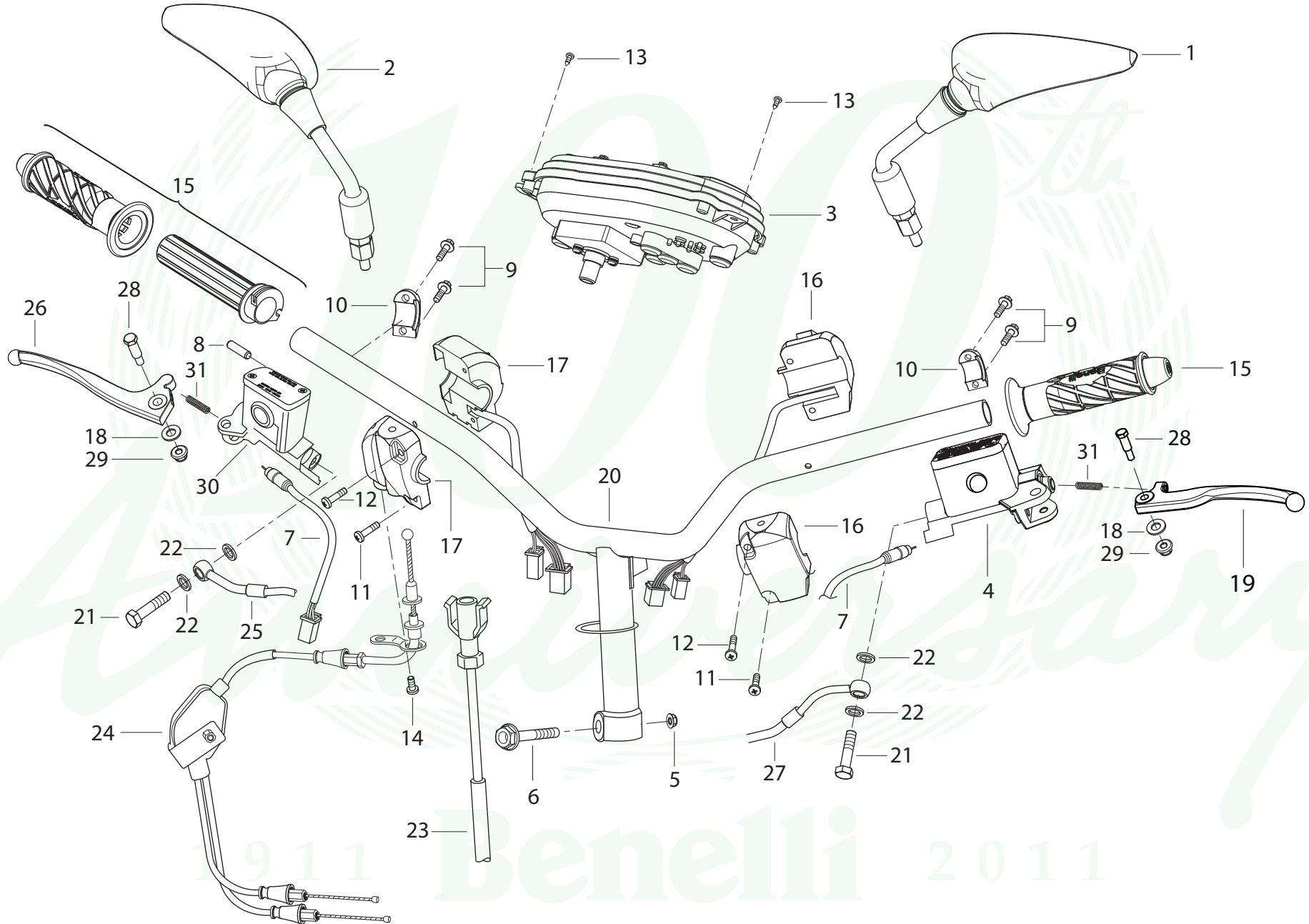


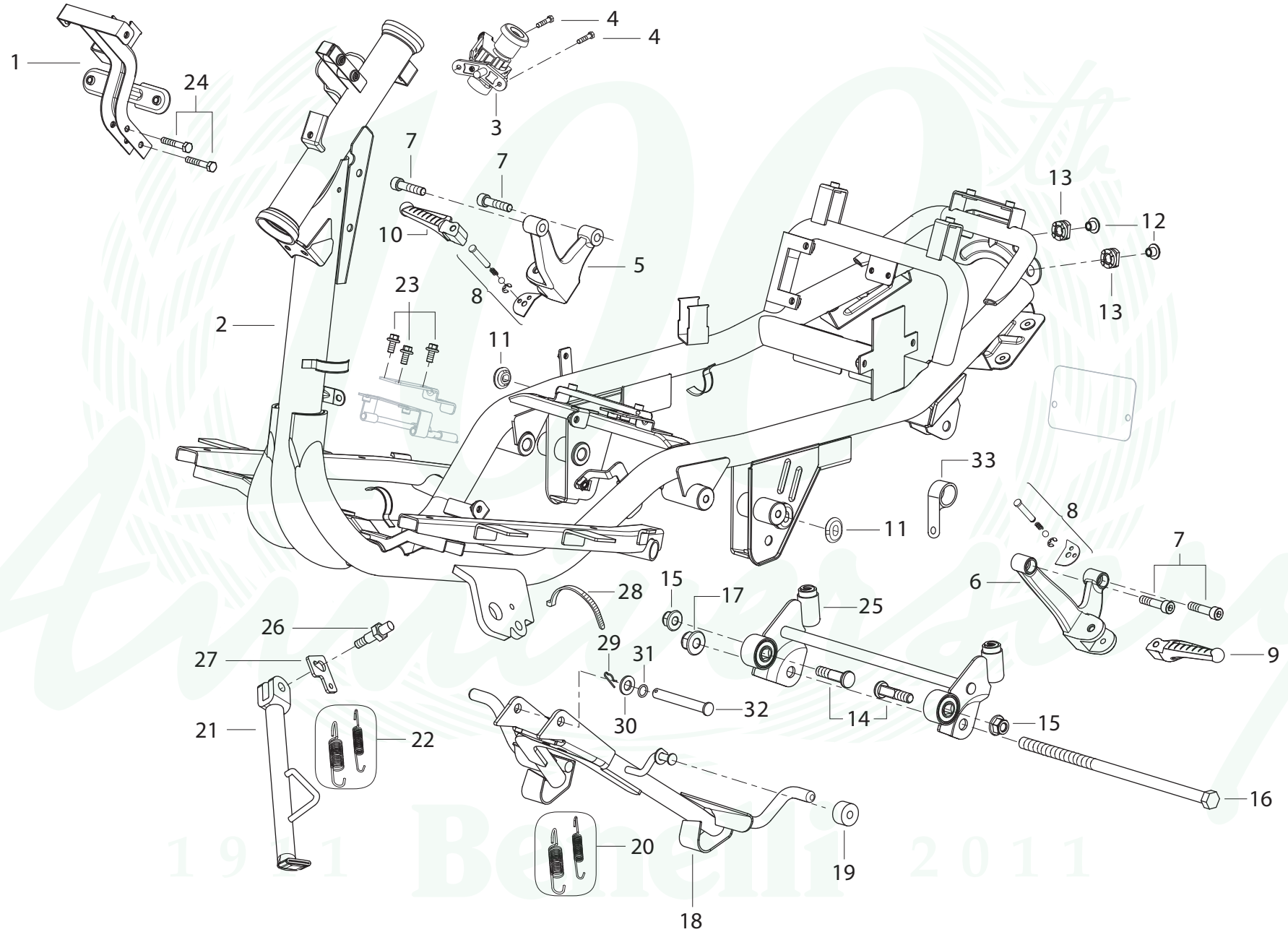


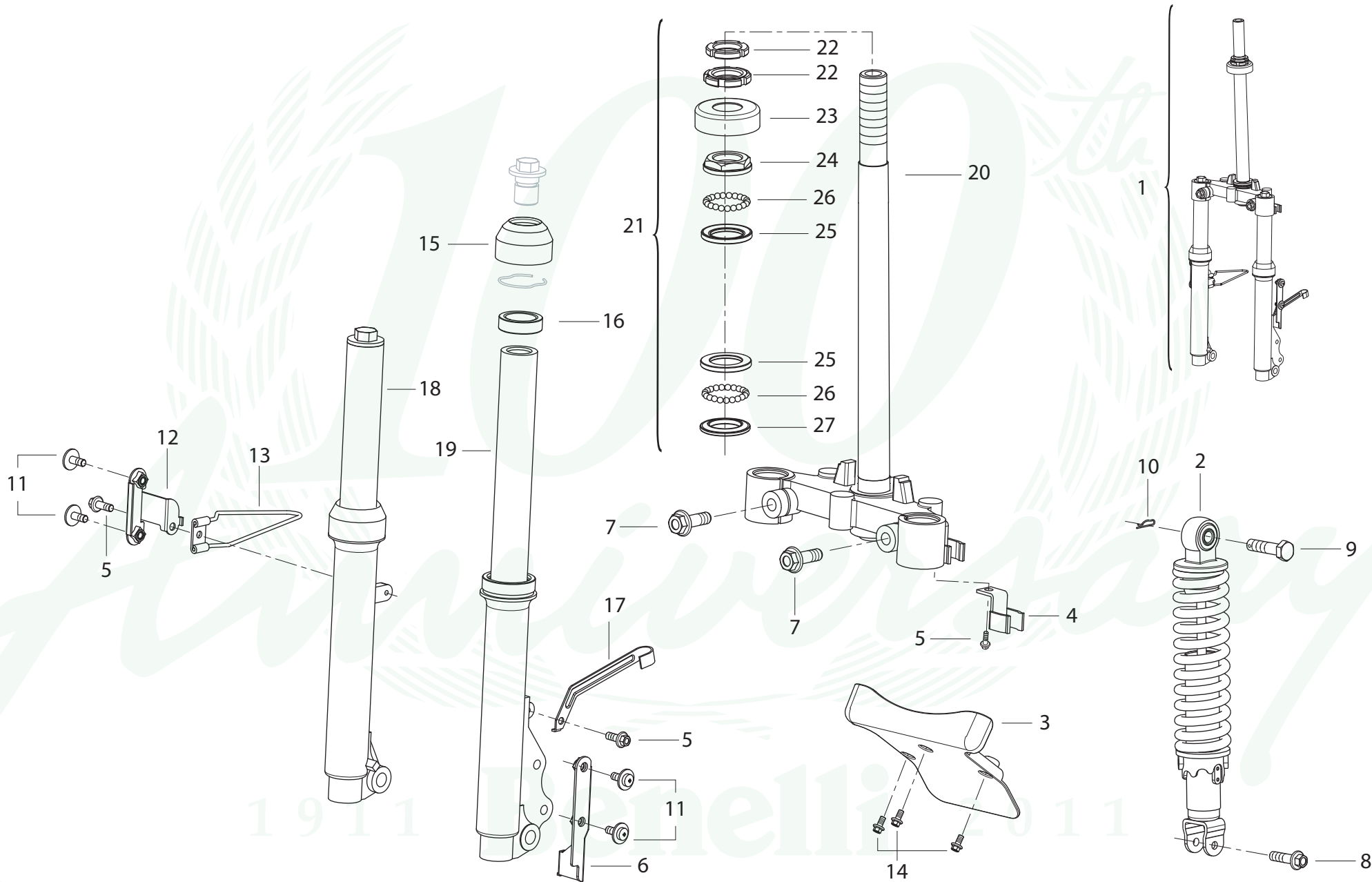


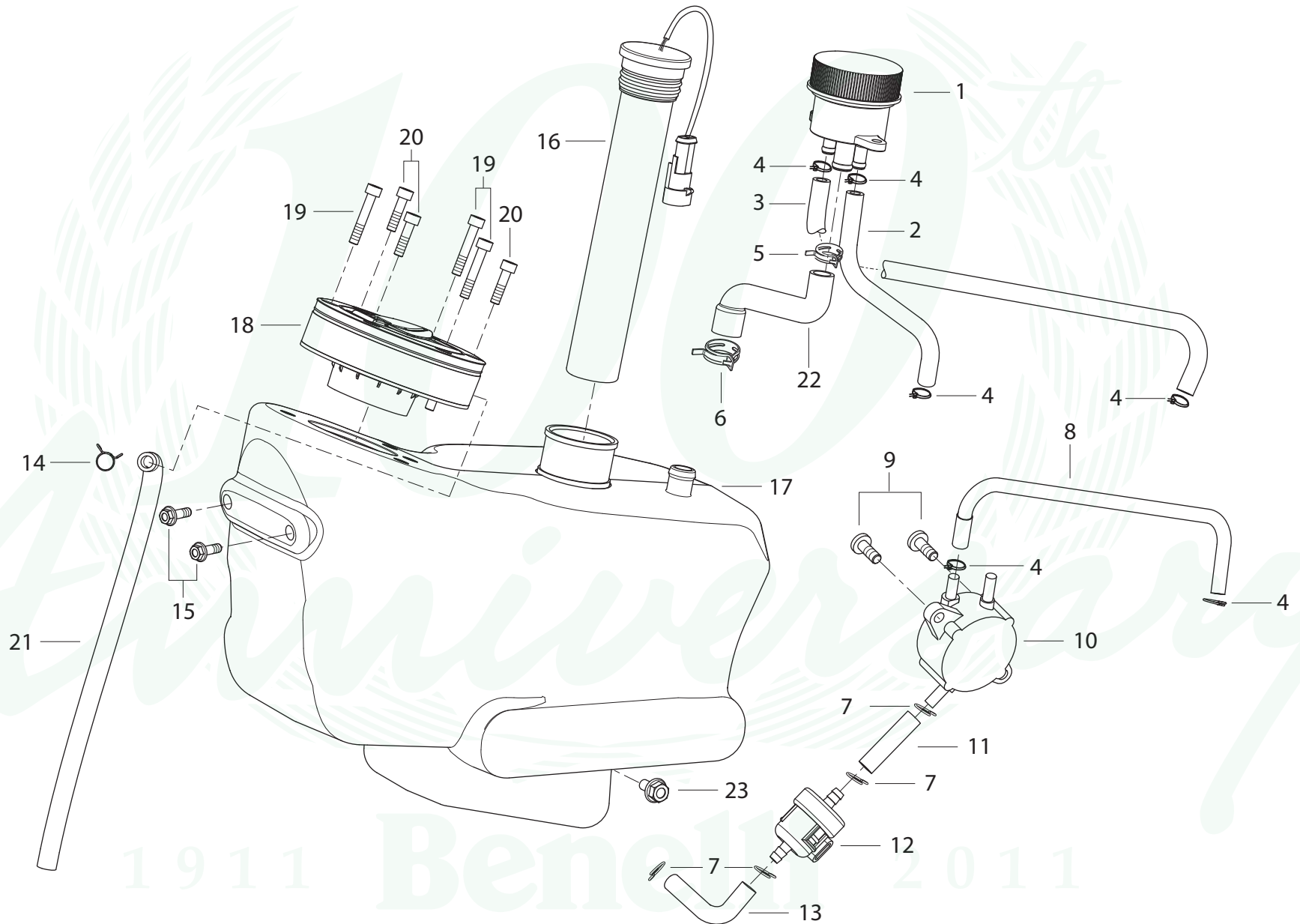














# SERBATOIO OLIO

SERBATOIO OLIO

OIL TANK

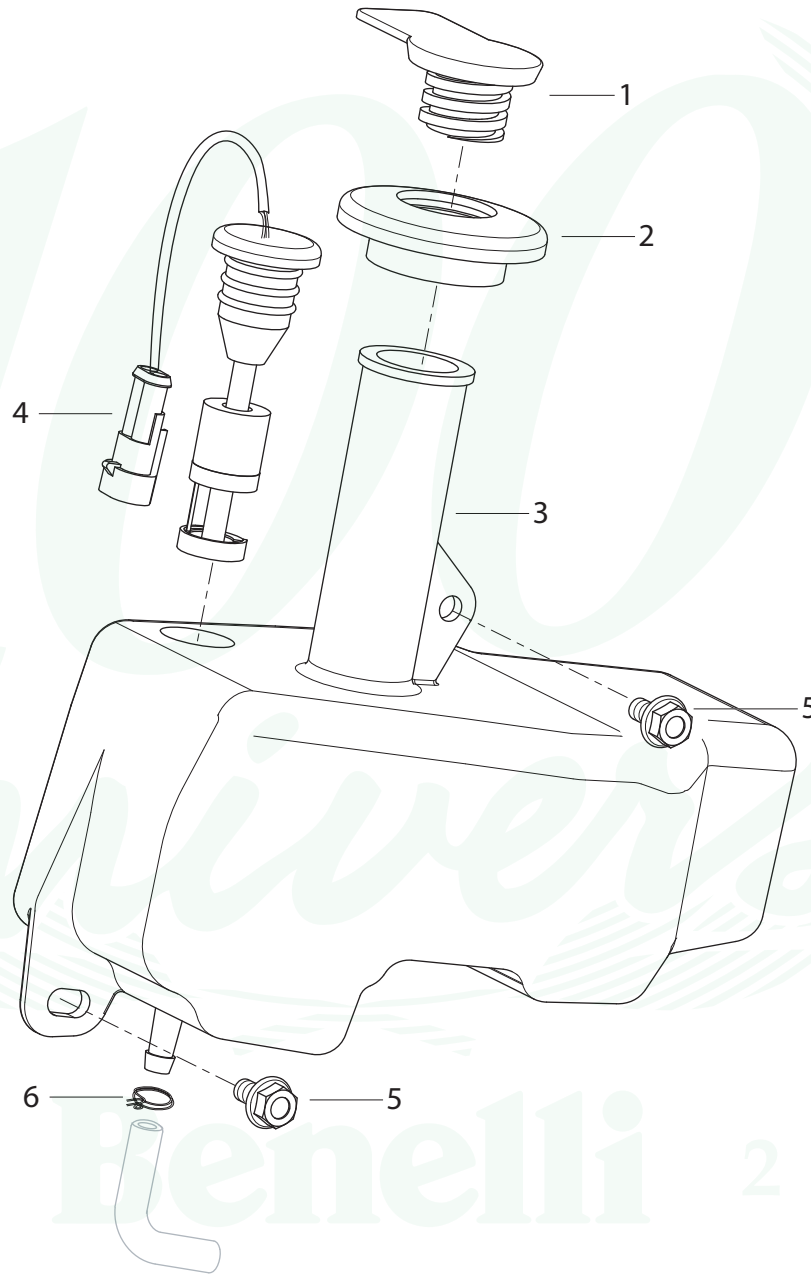
RESERVOIR HUILE

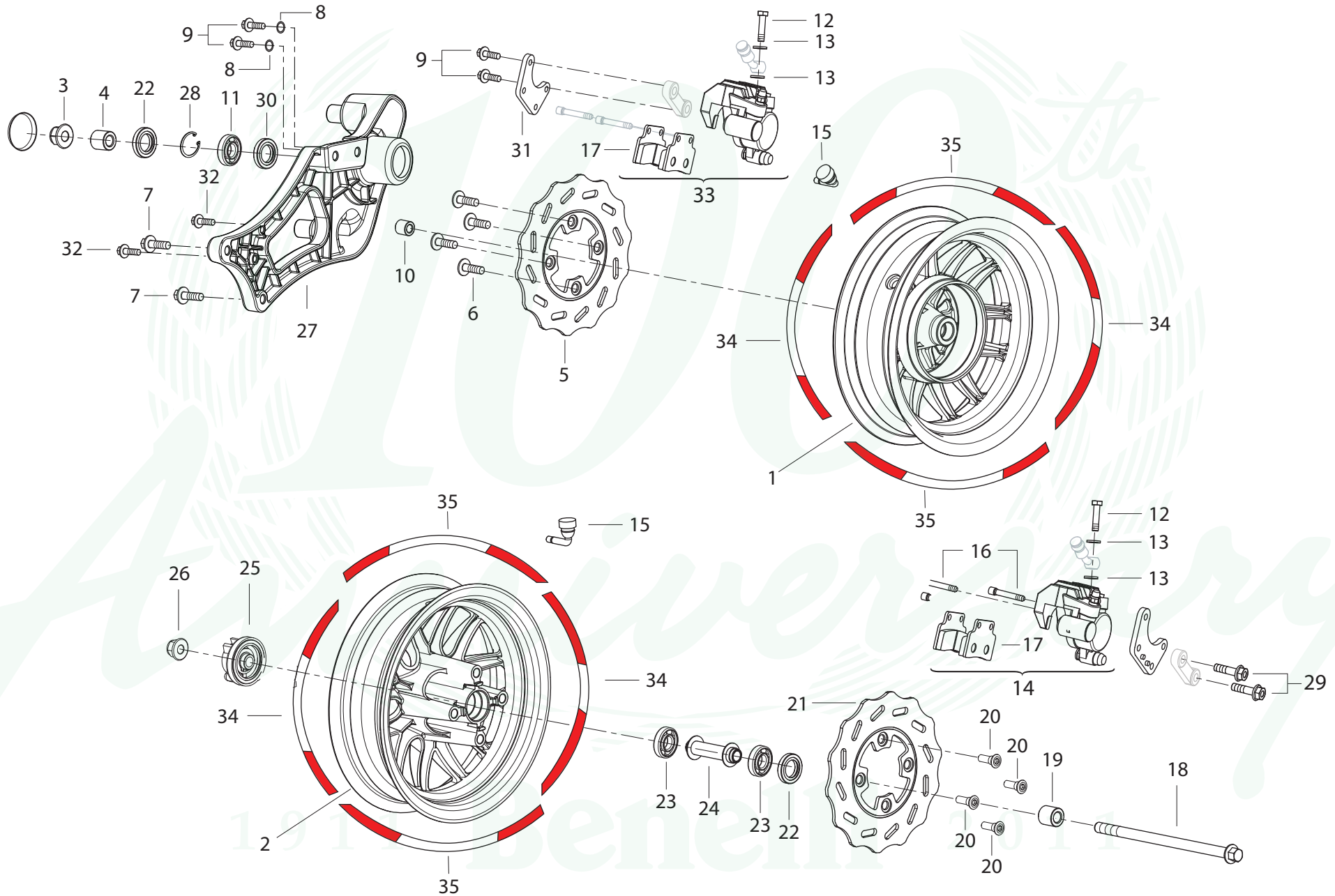
OILTANK

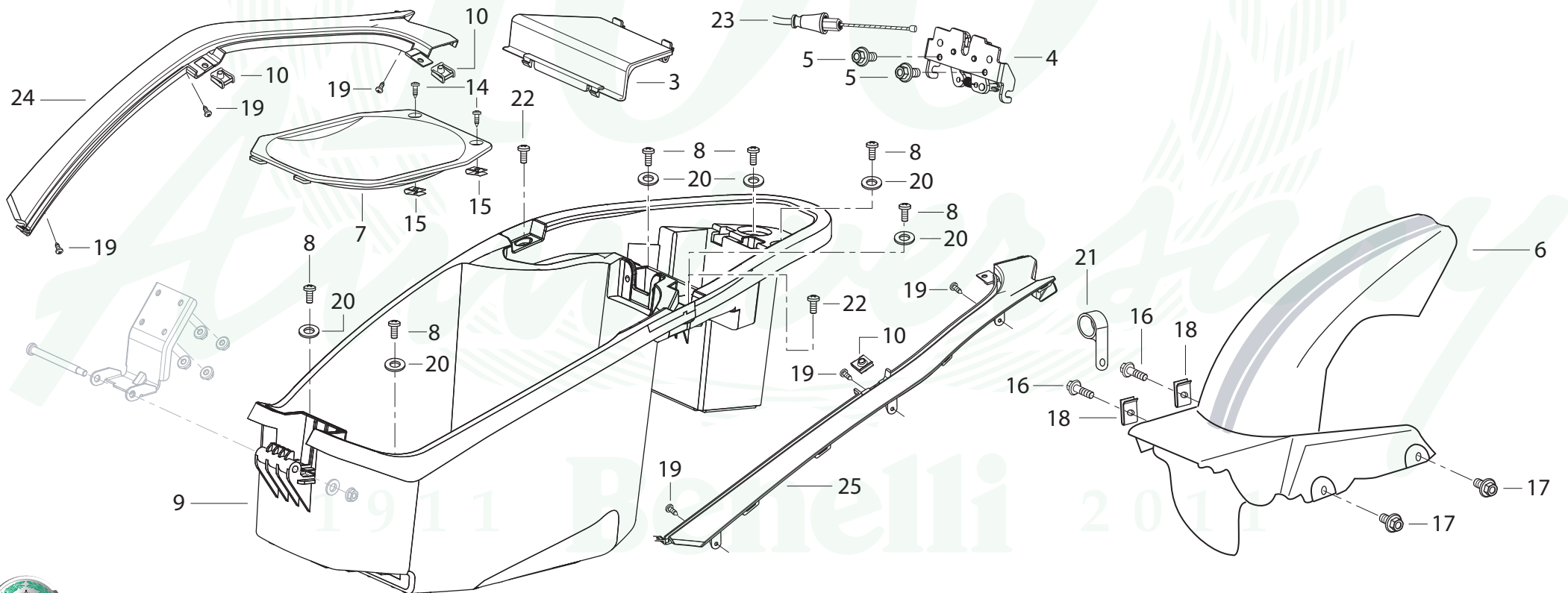
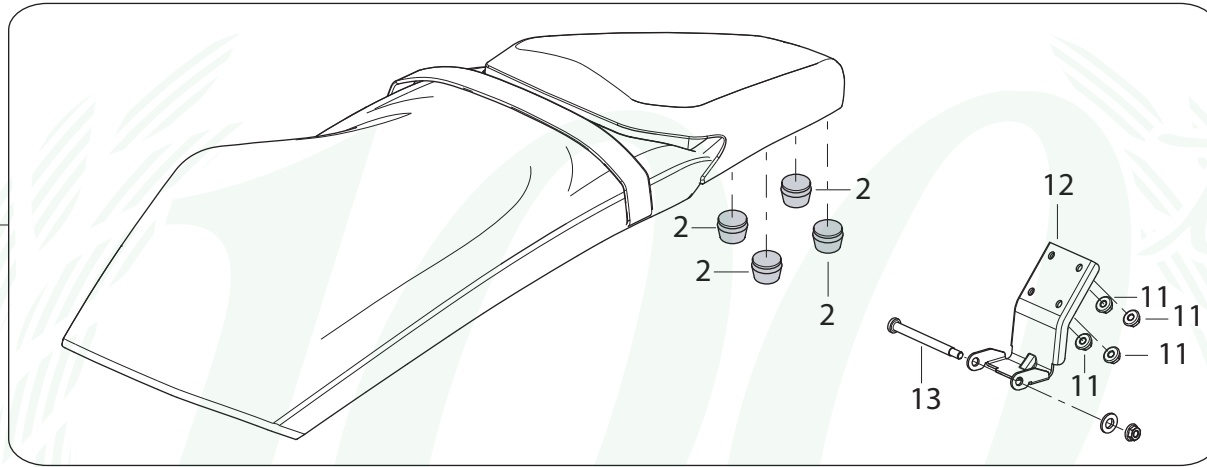
TANQUE ACEITE

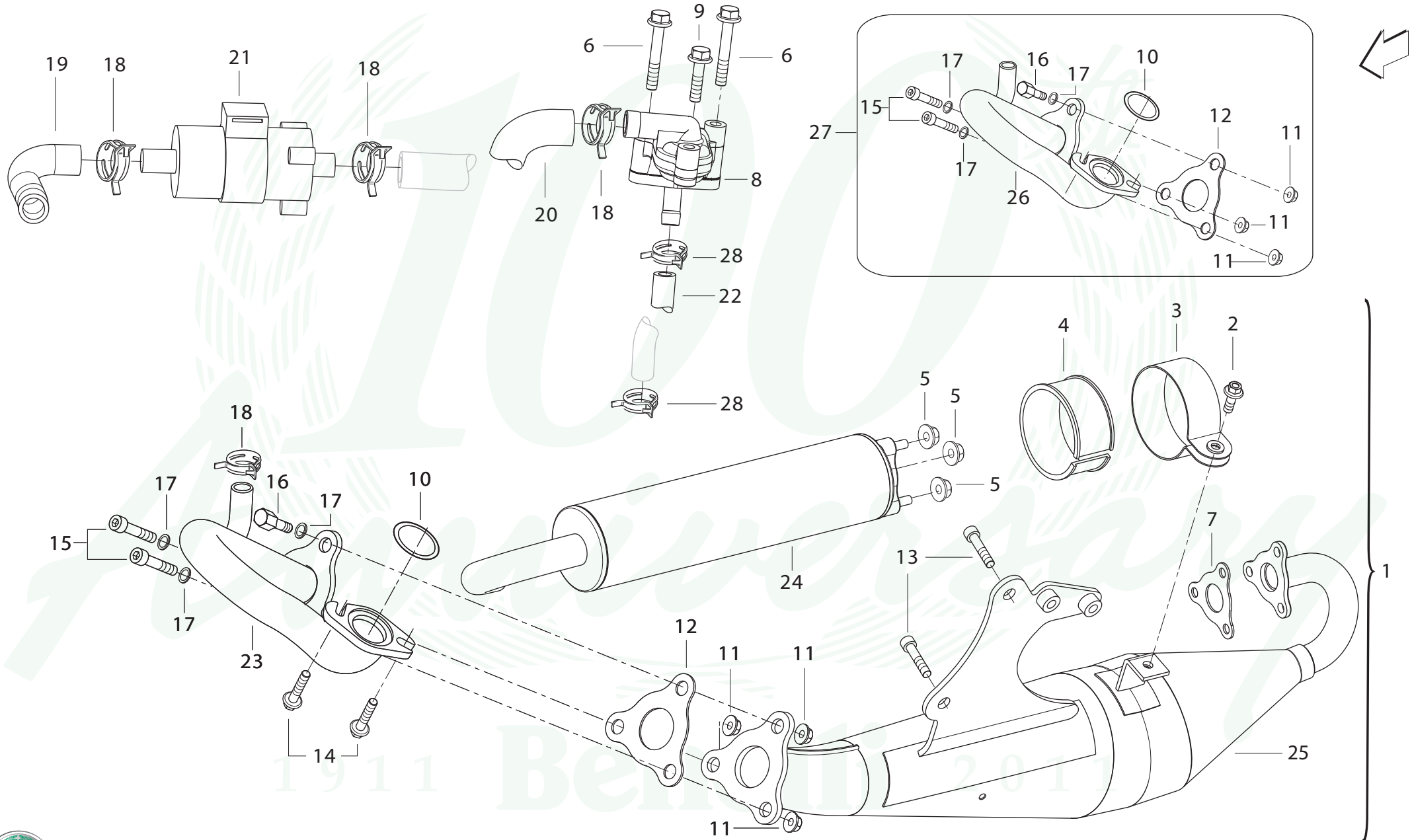
TAVOLA  
DRAWING  
TABLE  
BILD  
TABLA

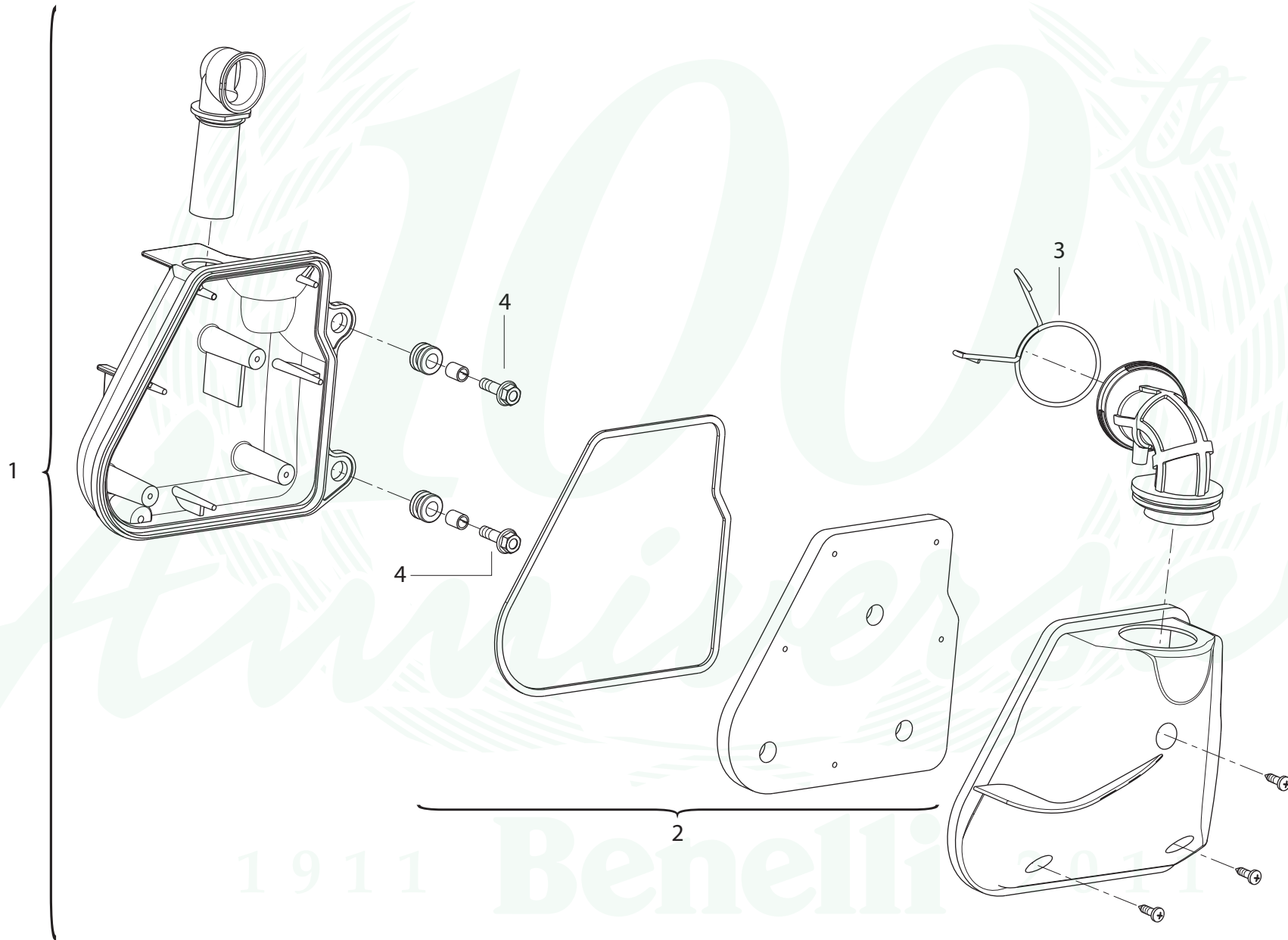
014

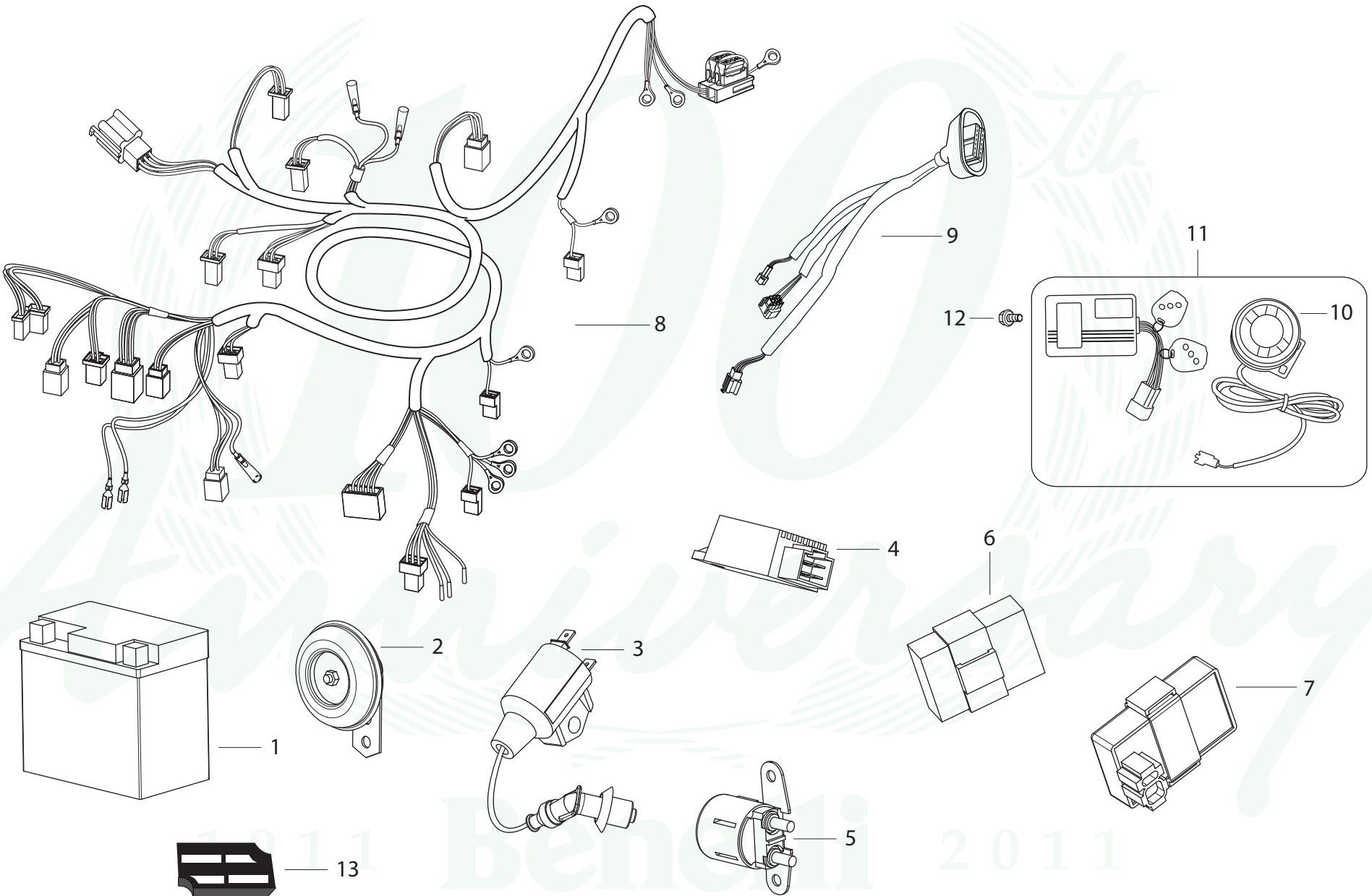








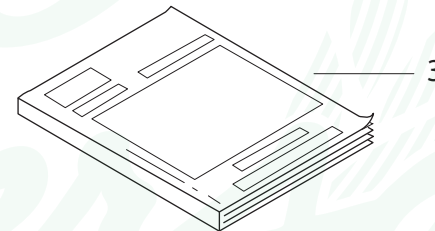
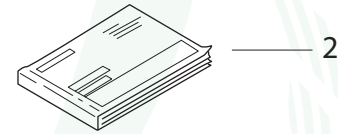












1911

Benelli

2011



IL PRESENTE MANUALE È PROPRIETÀ DELLA  
BENELLI Q.J. S.R.L.  
OGNI PRODUZIONE, TOTALE O PARZIALE,  
È VIETATA.

THIS MANUAL IS PROPERTY OF  
BENELLI Q.J. S.R.L.  
ANY TOTAL OR PARTIAL REPRODUCTION  
IS FORBIDDEN.

CE MANUEL EST DE LA PROPRIÉTÉ DE  
BENELLI Q.J. S.R.L.  
TOURE REPRODUCTION TOTALE OU  
PARTIELLE, EST INTERDITE.

DIE VORLIEGENDE BEDIENUNGSANLEITUNG  
STEHT IM EIGENTUM VON BENELLI Q.J. S.R.L.  
JEDE VÖLLIGE ODER TEILWEISE KOPIE  
IST VERBOTEN.

EL PRESENTE MANUAL ES PROPIEDAD  
DE BENELLI Q.J. S.R.L.  
SE PROHÍBE SU REPRODUCCIÓN  
TOTAL O PARCIAL.



Benelli consiglia accessori originali  
Benelli suggestions original accessories  
Benelli conseille accessoires original  
Benelli raten Zubehör originell  
Benelli aconsejar accesorios originales



1911

Benelli

2011

Ver.01 - Apr'11  
Benelli Q.J. s.r.l.  
Strada della Fornace Vecchia  
61100 - Pesaro - Italy  
[www.benelli.com](http://www.benelli.com)

